

## LAURA-O-PIN

~40° x 12° oval beam optimized for CREE XP-E.  
Assembly with white holder, installation tape and location pins.

### TECHNICAL SPECIFICATIONS:

Dimensions	21.6 x 21.6 mm
Height	13.1 mm
Fastening	tape, pin
ROHS compliant	yes ⓘ

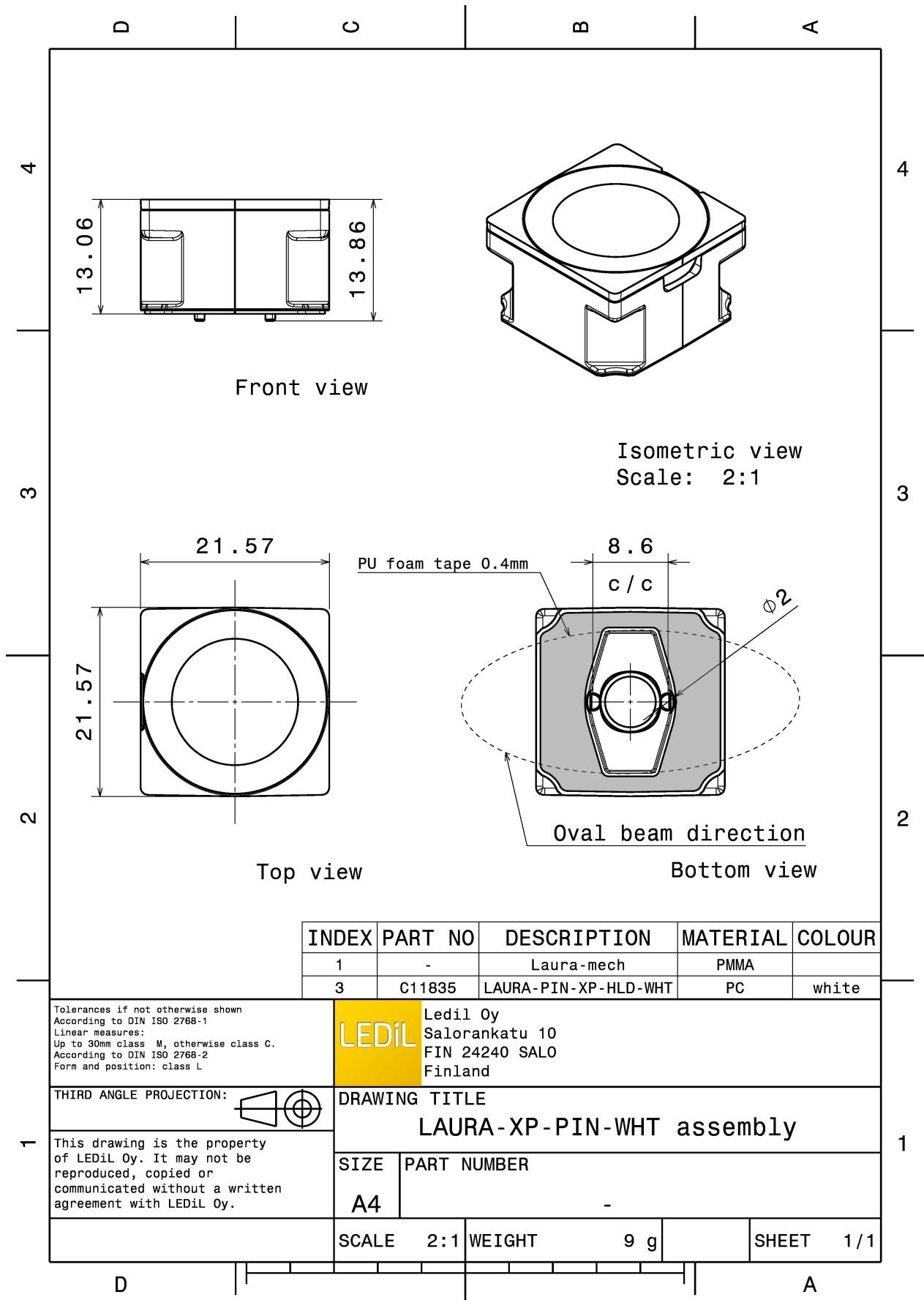


### MATERIAL SPECIFICATIONS:

Component	Type	Material	Colour	Finish
LAURA-O	Single lens	PMMA	clear	
LAURA-PIN-XP-HLD-WHT	Holder	PC	white	
ROSE-TAPE	Tape	Acrylic foam	black	

### ORDERING INFORMATION:

Component	Type	Qty in box	MOQ	MPQ	Box weight (kg)
CA12012_LAURA-O-PIN » Box size: 450 x 260 x 160 mm	Single lens	1440	360	180	7.5



See also our general installation guide: [www.ledil.com/installation\\_guide](http://www.ledil.com/installation_guide)

### PHOTOMETRIC DATA (MEASURED):

#### CREE → LED

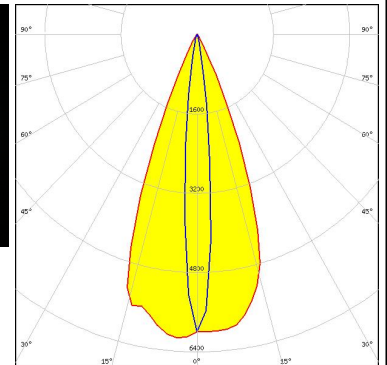
LED XB-D White  
FWHM / FWTM 39.0 + 11.0°  
Efficiency 94 %  
Peak intensity 4.8 cd/lm  
LEDs/each optic 1  
Light colour White  
Required components:

#### CREE → LED

LED XP-E  
FWHM / FWTM 40.0 + 13.0° / 54.0 + 22.0°  
Efficiency 91 %  
Peak intensity 4.8 cd/lm  
LEDs/each optic 1  
Light colour White  
Required components:

#### CREE → LED

LED XP-E2  
FWHM / FWTM 41.0 + 10.0° / 56.0 + 22.0°  
Efficiency 91 %  
Peak intensity 6.7 cd/lm  
LEDs/each optic 1  
Light colour White  
Required components:



#### CREE → LED

LED XP-G  
FWHM / FWTM 40.0 + 13.0°  
Efficiency 91 %  
LEDs/each optic 1  
Light colour White  
Required components:

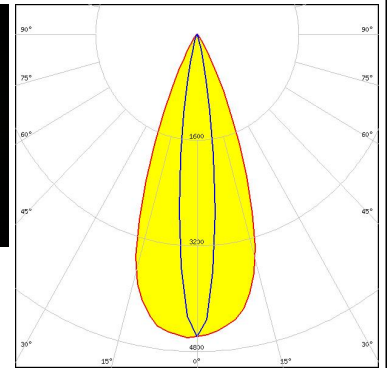
#### PHOTOMETRIC DATA (MEASURED):

#### LUMILEDS

LED LUXEON Rebel  
 FWHM / FWTM 41.0 + 12.0° / 56.0 + 24.0°  
 Efficiency 90 %  
 Peak intensity 5 cd/lm  
 LEDs/each optic 1  
 Light colour White  
 Required components:

#### LUMILEDS

LED LUXEON Rebel ES  
 FWHM / FWTM 41.0 + 14.0° / 60.0 + 28.0°  
 Efficiency 90 %  
 Peak intensity 4.6 cd/lm  
 LEDs/each optic 1  
 Light colour White  
 Required components:



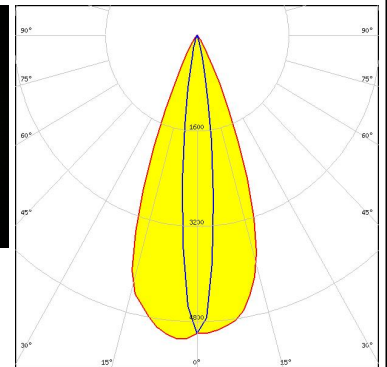
#### LUMILEDS

LED LUXEON Z ES  
 FWHM / FWTM 40.0 + 11.0° / 56.0 + 22.0°  
 Efficiency 91 %  
 Peak intensity 6.2 cd/lm  
 LEDs/each optic 1  
 Light colour White  
 Required components:

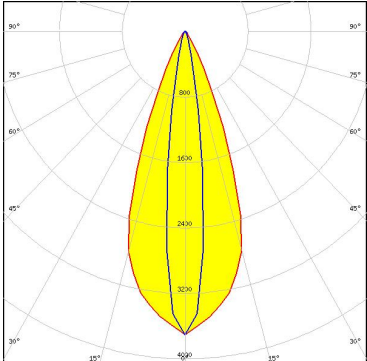



#### NICHIA

LED NCSxx19B  
 FWHM / FWTM 41.0 + 13.0° / 58.0 + 26.0°  
 Efficiency 90 %  
 Peak intensity 5.1 cd/lm  
 LEDs/each optic 1  
 Light colour White  
 Required components:



#### PHOTOMETRIC DATA (MEASURED):

<p><b>OSRAM</b> Opto Semiconductors</p> <p>LED OSLON Square EC</p> <p>FWHM / FWTM 39.0 + 14.0° / 57.0 + 31.0°</p> <p>Efficiency 87 %</p> <p>Peak intensity 3.8 cd/lm</p> <p>LEDs/each optic 1</p> <p>Light colour White</p> <p>Required components:</p>	
<p><b>OSRAM</b> Opto Semiconductors</p> <p>LED OSLON Square PC</p> <p>FWHM / FWTM 40.0 + 12.0° / 60.0 + 26.0°</p> <p>Efficiency 88 %</p> <p>Peak intensity 5.1 cd/lm</p> <p>LEDs/each optic 1</p> <p>Light colour White</p> <p>Required components:</p>	
<p><b>OSRAM</b> Opto Semiconductors</p> <p>LED OSLON SSL 150</p> <p>FWHM / FWTM 36.0 + 10.0° / 23.0 + 52.0°</p> <p>Efficiency 86 %</p> <p>Peak intensity 4.4 cd/lm</p> <p>LEDs/each optic 1</p> <p>Light colour White</p> <p>Required components:</p>	
<p><b>OSRAM</b> Opto Semiconductors</p> <p>LED OSLON SSL 80</p> <p>FWHM / FWTM 40.0 + 12.0° / 26.0 + 54.0°</p> <p>Efficiency 86 %</p> <p>Peak intensity 4.5 cd/lm</p> <p>LEDs/each optic 1</p> <p>Light colour White</p> <p>Required components:</p>	

### PHOTOMETRIC DATA (MEASURED):

#### **OSRAM** Opto Semiconductors

LED SFH 4715S  
FWHM / FWTM 41.0 + 14.0°  
Efficiency %  
LEDs/each optic 1  
Light colour White  
Required components:

#### **OSRAM** Opto Semiconductors

LED SFH 4725S  
FWHM / FWTM 40.0 + 14.0° / 58.0 + 24.0°  
Efficiency %  
LEDs/each optic 1  
Light colour White  
Required components:

#### SEOUL SEMICONDUCTOR

LED Z5  
FWHM / FWTM 40.0 + 12.0°  
Efficiency %  
LEDs/each optic 1  
Light colour White  
Required components:

### PHOTOMETRIC DATA (SIMULATED):

#### LUMILEDS

LED	LUXEON H50-2
FWHM / FWTM	13.0 + 61.0° / 30.0 + 84.0°
Efficiency	81 %
Peak intensity	2.7 cd/lm
LEDs/each optic	1
Light colour	White
Required components:	

#### LUMILEDS

LED	LUXEON IR Domed 150
FWHM / FWTM	67.0 + 10.0° / 88.0 + 10.0°
Efficiency	0 %
LEDs/each optic	1
Light colour	White
Required components:	

#### LUMILEDS

LED	LUXEON IR Domed 60
FWHM / FWTM	65.0 + 11.0° / 84.0 + 28.0°
Efficiency	90 %
LEDs/each optic	1
Light colour	White
Required components:	

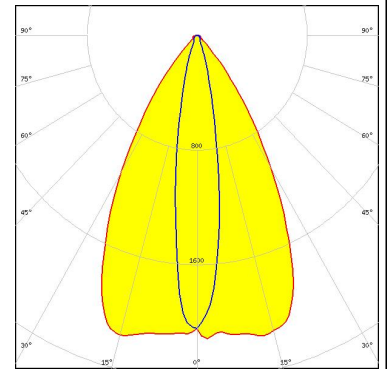
#### LUMILEDS

LED	LUXEON IR Domed 90
FWHM / FWTM	63.0 + 11.0° / 83.0 + 24.0°
Efficiency	90 %
LEDs/each optic	1
Light colour	White
Required components:	

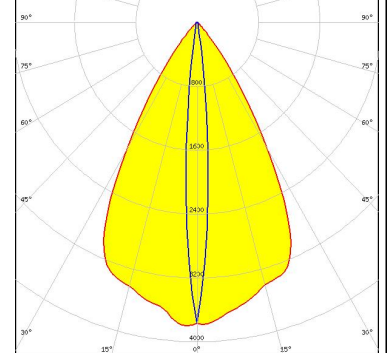
### PHOTOMETRIC DATA (SIMULATED):



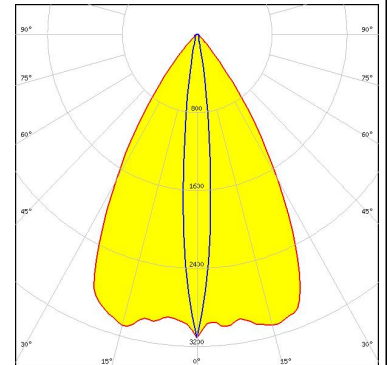
LED NV4WB35AM  
 FWHM / FWTM 60.0 + 18.0° / 86.0 + 38.0°  
 Efficiency 90 %  
 Peak intensity 2.2 cd/lm  
 LEDs/each optic 1  
 Light colour White  
 Required components:



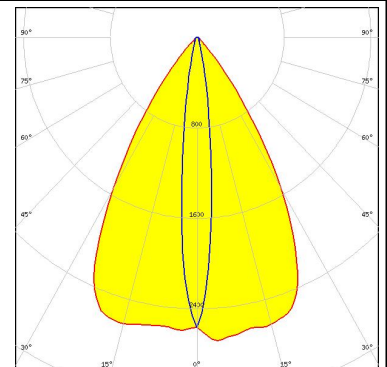
LED OSLOM Signal  
 FWHM / FWTM 60.0 + 8.0° / 80.0 + 18.0°  
 Efficiency 91 %  
 Peak intensity 3.8 cd/lm  
 LEDs/each optic 1  
 Light colour Red  
 Required components:



LED OSLOM Square CSSRM2/CSSRM3  
 FWHM / FWTM 62.0 + 11.0° / 84.0 + 24.0°  
 Efficiency 91 %  
 Peak intensity 3.1 cd/lm  
 LEDs/each optic 1  
 Light colour White  
 Required components:



LED LM302D  
 FWHM / FWTM 63.0 + 12.0° / 84.0 + 28.0°  
 Efficiency 88 %  
 Peak intensity 2.7 cd/lm  
 LEDs/each optic 1  
 Light colour White  
 Required components:





### GENERAL INFORMATION:

NOTE: The typical beam angle will be changed by different color, chip size and chip position tolerance. The typical total beam angle is the full angle measured where the luminous intensity is half of the peak value.

### MATERIALS:

As part of our continuous research and improvement processes, and to ensure the best possible quality and availability of our products, LEDiL reserves the right to change material grades without notice.

### PRODUCT DATA USER AGREEMENT AND DISCLAIMER:

The measured data in the provided downloadable LEDiL Product Datasheets and Mechanical 2D-Drawings is rounded and provided as reference for planning. LEDiL Oy's optical specifications have been verified by conducting performance testing of the products in accordance with the company's quality system. The reported data are averaged results of multiple measurements with typical variation. LEDiL Oy reserves the right to without prior notification make changes and improvements to its products.

LEDiL Oy assumes neither warranty, nor guarantee nor any other liability of any kind for the contents and correctness of the provided data. The provided data has been generated with highest diligence but the provided data may in reality not represent the complete possible variation range of all intrinsic parameters. Therefore, in certain cases a deviation from the provided data could occur.

LEDiL Oy reserves the right to undertake technical changes of its products without further notification which could lead to changes in the provided data. LEDiL Oy assumes no liability of any kind for the possible deviation from any provided data or any other damage resulting from the usage of the provided data.

The user agrees to this disclaimer and user agreement with the download or usage of the provided files.

#### LEDiL Oy

Joensuunkatu 13  
FI-24240 SALO  
Finland

#### LEDiL Inc.

228 West Page Street  
Suite D  
Sycamore IL 60178  
USA

#### Ledil Optics Technology (Shenzhen) Co., Ltd.

# 405 , Block B  
Casic Motor Building  
Shenzhen 518057  
P.R.CHINA

#### Local sales and technical support

[www.ledil.com/  
where\\_to\\_buy](http://www.ledil.com/where_to_buy)

#### Shipping locations

Salo, Finland  
Hong Kong, China

#### Distribution Partners

[www.ledil.com/  
where\\_to\\_buy](http://www.ledil.com/where_to_buy)