

## Getting your ELI up and running quickly!

### 1. Introduction

#### About ELI

ELI® is Future Designs, Inc.'s family of long-life, plug-and-play embedded displays. ELI products are true modular embedded display solutions that require no engineering or lead-time. All ELI products are compatible with a wide range of single board computers including Raspberry Pi, BeagleBone Black and Windows-based units. FDI designed ELI as an embedded display option that requires minimal development time to help customers reach production quickly. Once a product is in production, FDI's 10-15 year ELI product availability guarantee helps ensure production schedules without the risk of expensive or time consuming redesigns. Learn more about ELI at [TeamFDI.com/ELI](http://TeamFDI.com/ELI).

#### ELI Compatibility

ELI products are compatible with most single board computers, PCs and operating systems. See <https://www.teamfdi.com/product-details/eli70-irhw> under the **Compatibility** tab for the results of FDI's compatibility tests with popular operating systems and platforms. Our results, as indicated in the table, demonstrate ELI's versatility but the table is not exhaustive. ELI products are designed to work with any single board computer that has an HDMI or DVI output. To submit a question about ELI's compatibility with a platform or operating system that is not included in the table, contact a member of the FDI support team at [Support@teamfdi.com](mailto:Support@teamfdi.com).

### 2. Required Equipment (Not Provided)

1. HDMI Cable (Type A Male) to connect to the ELI for the video signal
2. USB Cable (Mini USB Type B) to connect to the ELI for the touch screen operation
3. 12V DC power input, 2.1mm, center positive, 1.2A min
4. Your choice of computer, SBC, or PC, with digital video output (HDMI or DVI) and USB port for touch input

### 3. Getting Started with ELI70-IRHW & ELI70-IPHW

#### A few notes prior to powering up your SBC:

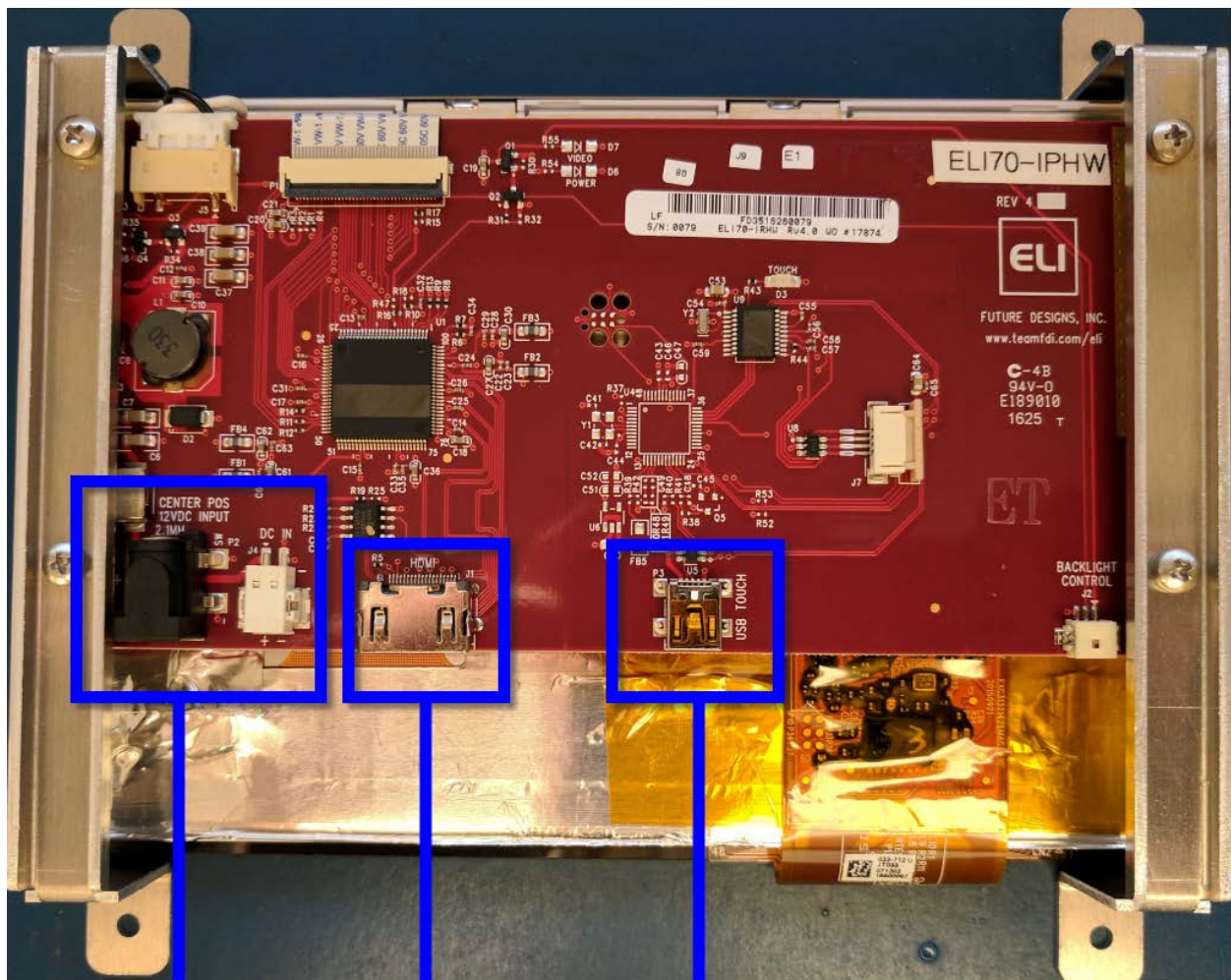
- BeagleBone Black (and many other SBCs) will boot up and drive ELI without any software changes.
  - Raspberry Pi requires a few additional steps which are listed in greater detail in the ELI Software Users Manuals which can be found here: <http://www.teamfdi.com/wp-content/uploads/ELI-Software-Users-Manual.pdf>
  - For additional information for specific SBCs, see our ELI Software Users Manuals.
  - For help with all your ELI needs, please visit [TeamFDI.com/ELI](http://TeamFDI.com/ELI)
1. Connect the HDMI cable from your SBC to the ELI board.
  2. Connect the Mini USB to USB cable to your SBC and the ELI70 for touch input (**See Figure below**).

# ELI70-IRHW, ELI70-IPHW, ELI70-IRHW-M & ELI70-IPHW-M

## Quick Start Guide

3. Apply Power to ELI with a 12VDC +/- 5% 2.0A power supply such as the Digi-key PN: [T1071-P5P-ND](#) or Mouser PN: [552-PSA-24A-120-R](#) (See Figure below).
4. Once you have verified or configured your SBC for the proper resolution, power on your SBC.
5. The ELI display will power on and show the output from the SBC.
6. Touch Screen Calibration should be performed in your operating system following one of the application notes (Linux, Windows 7, or Windows 10) found here: <https://www.teamfdi.com/product-details/eli70-irhw#documentation>.

### ELI70-IRHW & ELI70-IPHW Connections



**Power  
Input**

**HDMI  
Input**

**USB Mini-B  
Touch**

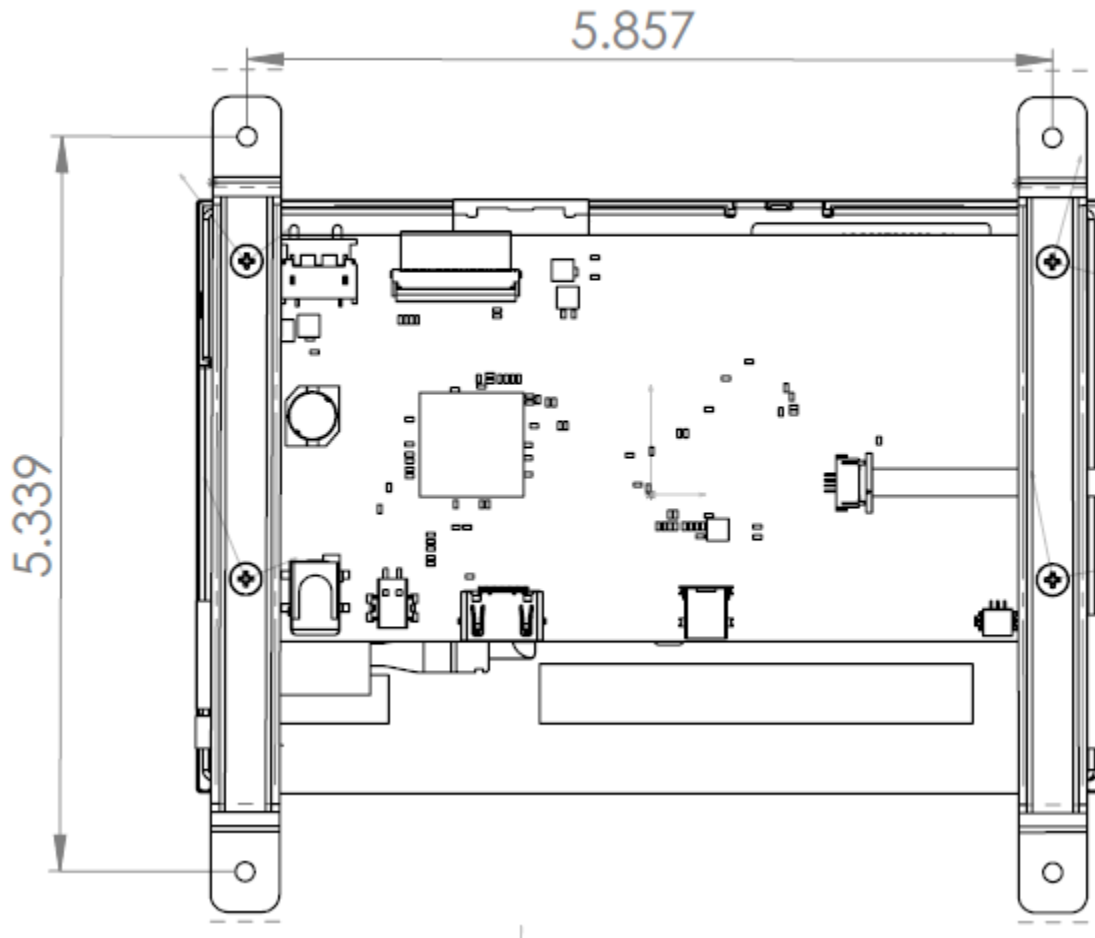
*Power may be supplied either via the 2-pin terminal block J4 or via the 2.1mm power jack P2 (center positive)*

# ELI70-IRHW, ELI70-IPHW, ELI70-IRHW-M & ELI70-IPHW-M

## Quick Start Guide

### 4. Brackets

ELI70-IRHW-M and ELI70-IPHW-M models come with brackets to provide additional mounting options. The dimensions of the bracket and mounting holes are shown below for your reference. If necessary, the brackets can be removed or replaced by removing two screws on each side of the ELI display.



For troubleshooting tips, please visit the FDI support website at: <http://www.teamfdi.com/support/>  
We'd like your feedback and welcome constructive comments to: [support@teamfdi.com](mailto:support@teamfdi.com)