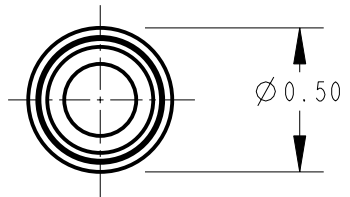
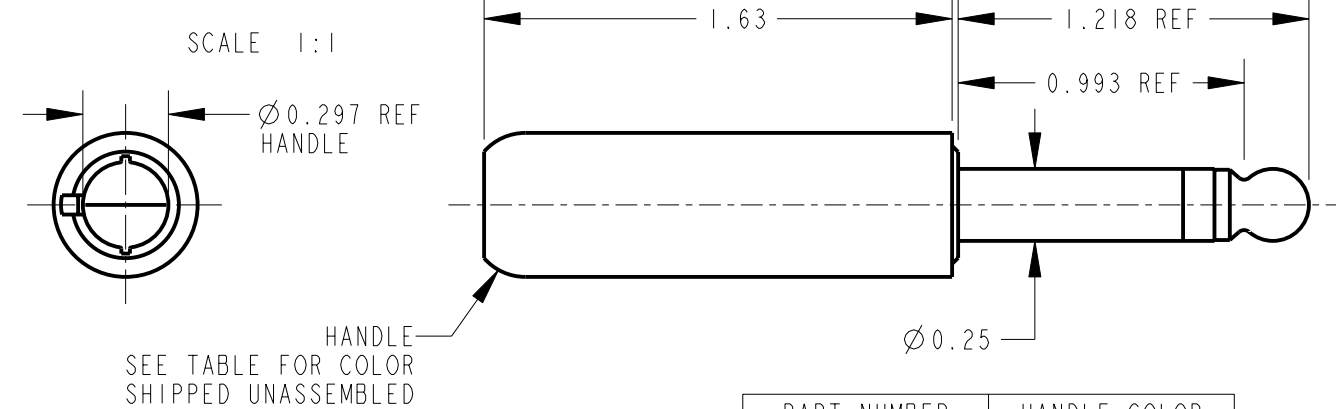


NOTES:

1. CABLE U-CLAMP, TERMINALS AND SCREWS ARE PACKED AND SHIPPED UNASSEMBLED AS K165X KIT.
2. MATERIALS:
 PLUG BODY AND TIP ROD - BRASS
 INSULATION - THERMOPLASTIC, BLACK
 HANDLE - THERMOPLASTIC
 SCREWS - BRASS
 TERMINALS - BRASS, TIN PLATED
 U-CLAMP - STEEL, TIN PLATED
3. THESE PRODUCTS ARE RoHS COMPLIANT.



PART NUMBER	HANDLE COLOR
440X	BLACK
445X	RED

CUSTOMER DRAWING

REV	ECO NUMBER	DATE	BY	APVD
A	26765	4-19-11	TO	TJK
REVISIONS				

★ STAR SYMBOL DENOTES CRITICAL DIMENSION

UNLESS OTHERWISE SPECIFIED

1. ALL DIMENSIONS IN INCHES
 - TWO PLACE DECIMALS ±0.01
 - THREE PLACE DECIMALS ±0.005
 - ANGLES ±1°
 - ALL DIA. CONCENTRIC WITHIN 0.005 T.I.R.
2. FEATURES ON THE SAME CENTERLINE MUST BE ALIGNED WITHIN ±0.002
3. REMOVE ALL BURRS

DO NOT SCALE DRAWING

THIS DRAWING DESCRIBES A DESIGN CONSIDERED PROPRIETARY IN NATURE, DEVELOPED AND MANUFACTURED BY SWITCHCRAFT INC. AND IS RELEASED ON A CONFIDENTIAL BASIS FOR IDENTIFICATION PURPOSES ONLY.				
SIZE	WIDTH	MULT	LBS/M	TEMPER
FINISH		MATERIAL		
SPEC No.		SPEC No.		
FIRST USED ON		SCALE		
		3:2		
DATE DRAWN	BY	CHKD	APVD	
7-Mar-14	TO	TO	TJK	
		3-7-14	3-7-14	
NAME		PART No.		REV
2 CONDUCTOR PLUG Ø0.25		440X_445X		A

