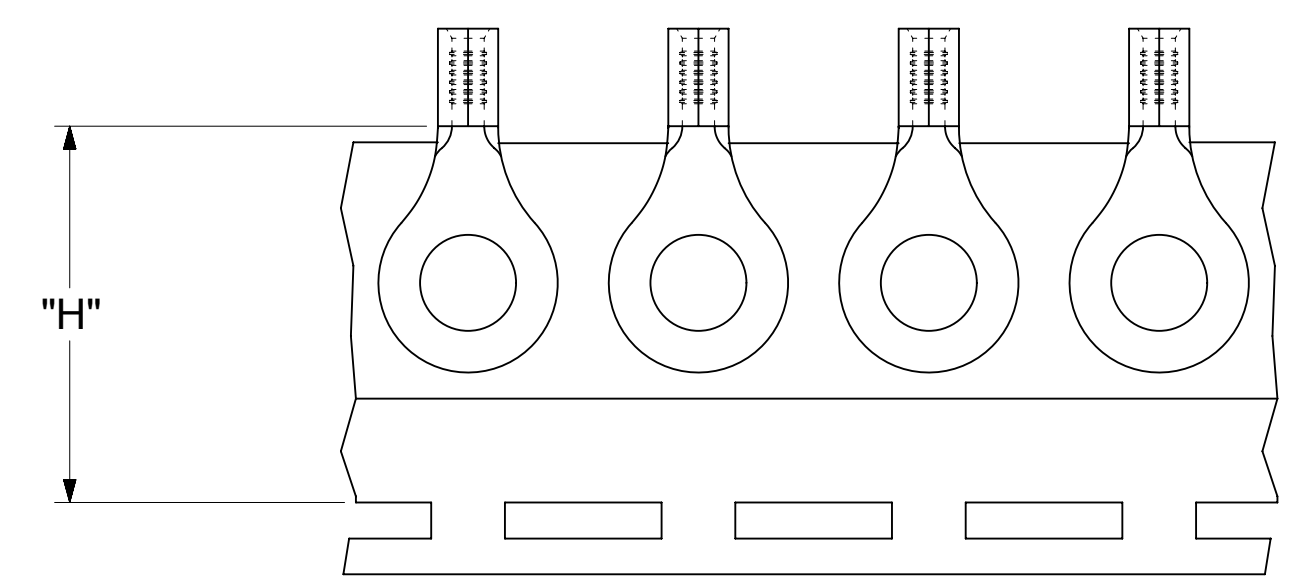
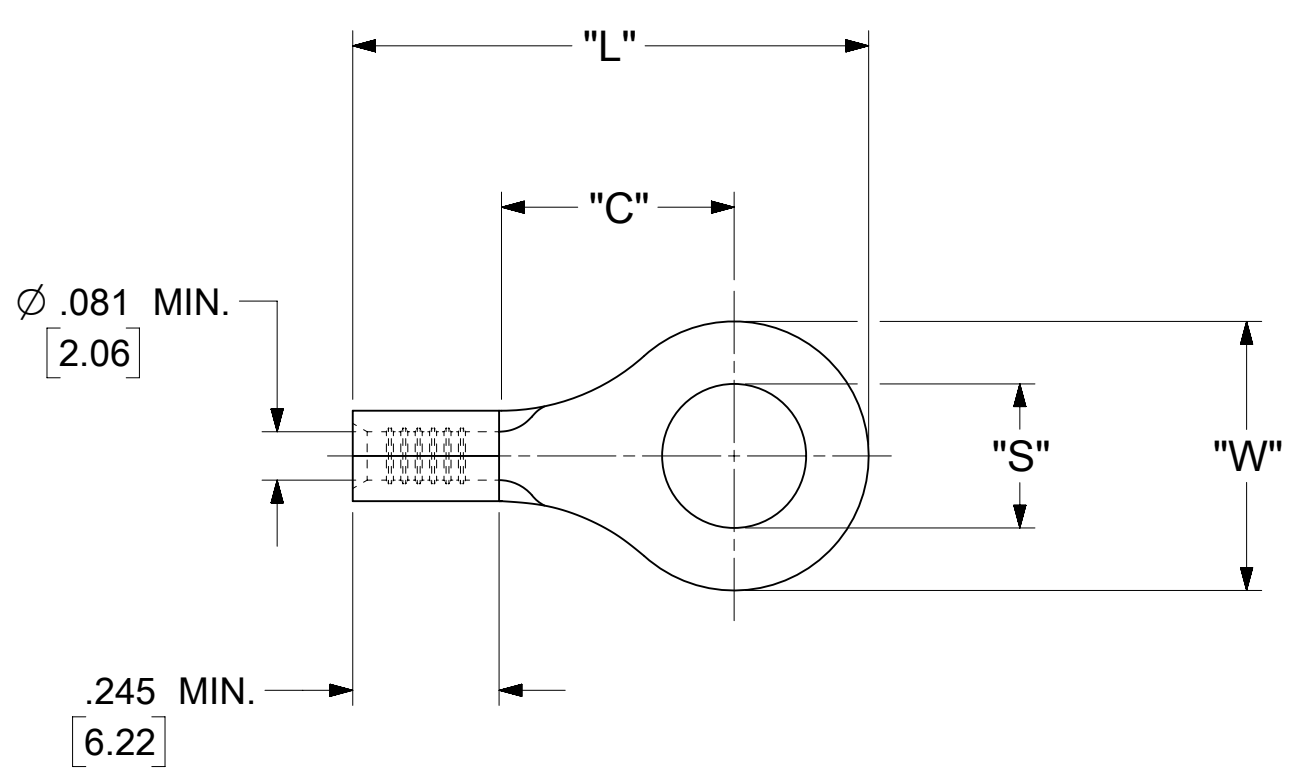


LOOSE PIECE		TAPE MOUNTED		SPECIFICATIONS					
MATERIAL NUMBER	ENGINEERING NUMBER	MATERIAL NUMBER	ENGINEERING NUMBER	STUD SIZE	"S" ±.005 [0.13]	"W" ±.010 [0.25]	"C" MIN.	"L" MAX.	"H"
190440143	B-118-10	---	---	10	.198 [5.03]	.534 [13.56]	.554 [14.07]	1.115 [28.32]	1.172 [29.77]
190440144	B-118-14	---	---	14	.265 [6.73]				
190440146	B-118-38	---	---	38	.390 [9.91]				
190440148	B-118-56	---	---	56	.328 [8.33]				
190440150	B-123-04	---	---	4	.119 [3.02]	.250 [6.35]	.209 [5.31]	.639 [16.23]	.98 [24.89]
190440152	B-123-06	190440153	B-123-06T	6	.146 [3.71]				
190440154	B-123-08	190440155	B-123-08T	8	.173 [4.39]				
190440156	B-125-10	---	---	10	.198 [5.03]	.467 [11.86]	.388 [9.86]	.916 [23.27]	.98 [24.89]
190440158	B-125-14	190440159	B-125-14T	14	.265 [6.73]				
190440160	B-125-56	---	---	56	.328 [8.33]				
190440028	B-137-04	---	---	4	.119 [3.02]	.312 [7.92]	.285 [7.24]	.730 [18.54]	.98 [24.89]
190440030	B-137-06	---	---	6	.146 [3.71]				
190440031	B-137-08	190440176	B-137-08T	6	.173 [4.39]				
190440032	B-137-10	190440177	B-137-10T	10	.198 [5.03]				
190440033	B-139-04	---	---	4	.119 [3.02]				
190440035	B-139-06	---	---	6	.146 [3.71]	.342 [8.69]	.310 [7.87]	.775 [19.69]	.98 [24.89]
190440037	B-139-08	---	---	8	.173 [4.39]				
190440039	B-139-10	---	---	10	.198 [5.03]				



PARTS ON TAPE

- NOTES:
- MATERIAL: COPPER .031±.001 [0.79] THK.
 - PLATING: ELECTRO-TIN (.0003 MIN).
 - WIRE SIZE: 16-14 AWG
1.0-2.5 MM²
 - ALL DIMENSIONS IN INCHES/[MM].
 - PARTS ARE ROHS COMPLIANT.
 - DIMS. SHOWN ARE FOR REFERENCE ONLY.

SYMBOLS	THIS DRAWING CONTAINS INFORMATION THAT IS PROPRIETARY TO MOLEX ELECTRONIC TECHNOLOGIES, LLC AND SHOULD NOT BE USED WITHOUT WRITTEN PERMISSION										
	DIMENSION UNITS	SCALE		CURRENT REV DESC: MIGRATION TO ECTR/NX						molex	
▽ = 0	INCH/MM	NTS		EC NO: 622916							
▽ = 0	GENERAL TOLERANCES (UNLESS SPECIFIED)			DRWN: ABENJAMINLW 2019/08/23						PRODUCT CUSTOMER DRAWING	
▽ = 0				MM		INCH		CHK'D: GROJAS01 2019/08/28			
▽ = 0				4 PLACES ± --- ± ---		3 PLACES ± --- ± 0.005		APPR: JMACNEIL 2019/09/05		DOC TYPE PSD	
▽ = 0				2 PLACES ± 0.13 ± 0.01		1 PLACE ± 0.25 ± ---		INITIAL REVISION:			
▽ = 0				0 PLACES ± --- ± ---		ANGULAR TOL ± 0.5 °		DRWN: JJ 1984/10/15		REVISION A1	
▽ = 0				DRAFT WHERE APPLICABLE MUST REMAIN WITHIN DIMENSIONS		THIRD ANGLE PROJECTION		DRAWING C-SIZE			
▽ = 0								SERIES 19044			
DOCUMENT STATUS		P1	RELEASE DATE	2019/09/05	22:49:20						