

Specification Sheet

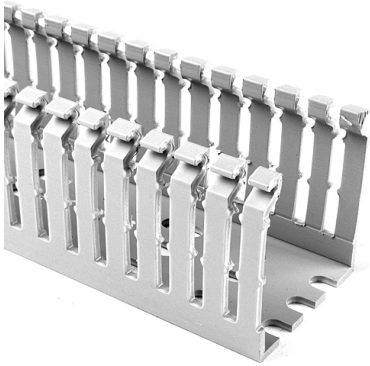
Part Number: 184-11010

Narrow fingers reduce fanning of the wires to the terminal blocks, presenting a neater appearance.

Each finger is provided with a double restriction to hold wires in the bottom portion of the duct, allowing for easier installation.

Mounting holes are uniform in size and are offered every 2 inches to accommodate compact designs and ease installation.

Optional covers snap on and off easily, and are provided with a non-slip lining that insures the covers remain in place during vibration.



High Density Slotted Wall Wiring Duct, 1" x 1.5", Non-Adhesive, PVC, Gray, 120ft/Carton

Article Number 184-11010

Type SLHD1X1.5

Color Gray (GY)

Quantity Per carton

Product Description HellermannTyton Pro-Duct High-Density, Slotted-Wall Wiring Duct features narrow fingers equaling a 2 to 1 finger ratio compared to standard slotted wiring duct. With the narrow fingers, compact designs and components are more easily accommodated.

Short Description High Density Slotted Wall Wiring Duct, 1" x 1.5", Non-Adhesive, PVC, Gray, 120ft/Carton

Global Part Name SLHD1X1.5-PVC-GY

Technical Description Non-Adhesive

Length L (Imperial) 6.0

Length L (Metric) 1.83

Fixation Method Non-Adhesive

Width W (Imperial) 1.0

Width W (Metric) 25.4

Height H (Imperial) 1.57

Height H (Metric) 39.9

Mounting Hole Centers (Imperial) 2.0

Material Polyvinylchloride (PVC)

Material Shortcut PVC

Flammability Self-extinguishing

Halogen Free No

Operating Temperature	+122°F (+50°C)
Reach Compliant (Article 33)	No
ROHS Compliant	Yes
Certification/Specification	CSA UL EN 50085-1:2005 + A1:2013 EN 50085-2-3_1A
UL Recognized (US)	Yes
Package Quantity (Imperial)	120
Package Quantity (Metric)	36.58
Customs Number	3925900000

© 2022 HellermannTyton. All Rights Reserved.

[Contact Us](#)

[RoHS/WEEE Compliance](#)

[Disclaimer](#)

[Terms and Conditions](#)