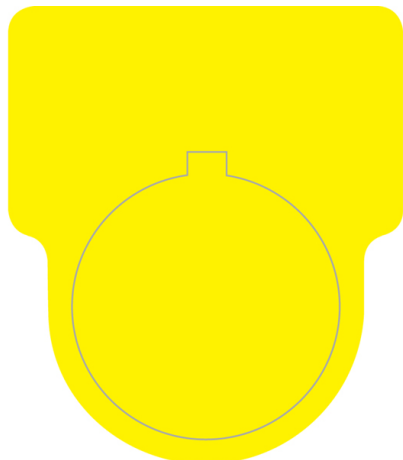


Specification Sheet

Part Number: 596-00405



Foam Nameplate labels are less costly than plastic or metal engraved plates, saving material costs.

Foam Nameplate labels conform to textured and other low energy surfaces ensuring the labels stay in place for the life of the product.

Labels are UV and chemical resistant for long life in an industrial environment.

Foam nameplate labels are printable using a thermal transfer printer for complete control and on-demand creation of labels.

Foam Nameplate, 1.2" x 1.5" Button Label With .88" Hole, PET, Yellow, 250/roll

Article Number	596-00405
Type	NPLH31X38YE22.5
Color	Yellow (YE)
Quantity Per	roll

Product Description	Foam Nameplate labels are designed to replace plastic and metal engraved phenolic plates commonly found on electrical control panels. The labels provide the look and feel of a plastic engraved or metal plate, but at a fraction of the cost. Labels can be printed using HellermannTyton Tagprint Pro labeling software and can include printed logos, barcodes and text of almost any size and type.
----------------------------	--

Short Description	Foam Nameplate, 1.2" x 1.5" Button Label With .88" Hole, PET, Yellow, 250/roll
Global Part Name	NPLH31X38YE22.5-518-YE
Technical Description	Foam Nameplate, 1.2" X 1.5" Button Label With .88" Hole, PET, Yellow
Width W (Imperial)	1.2
Width W (Metric)	30.5
Height H (Imperial)	1.50
Height H (Metric)	38.10
Width of Liner (Metric)	36.83
Width of Liner (Imperial)	1.45
Mounting Hole Diameter D (Imperial)	0.88
Mounting Hole Diameter D (Metric)	22.35 mm
Mounting Hole Diameter D Max (Metric)	22.35
Material	Type 518, Polyester Foam (518)
Material Shortcut	518

Adhesive	Acrylate with base of acrylic foam
Halogen Free	No
Adhesive Operating Temperature	-40°F to +176°F (-40°C to +80°C)
Operating Temperature	-40°F to +176°F (-40°C to +80°C)
Reach Compliant (Article 33)	Yes
ROHS Compliant	Yes
Package Quantity (Imperial)	250
Package Quantity (Metric)	250
Customs Number	3919102055
Labels per Column	1
Labels per Row	1