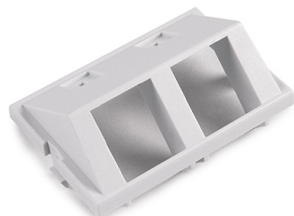


## Specification Sheet

Part Number: FPMIAD15-W



Faceplate inserts can be loaded and unloaded from the front  
Single gang faceplate will accept 3U of inserts

Dual gang faceplate will accept 6U of inserts

Modular Faceplate Angled Dual Insert With Icons, ABS, White, 2/pkg

**Article Number** 854-35366

**Type** FPMIAD15

**Color** White (WH)

**Quantity Per** bag

**Product Description** HellermannTyton's line of modular faceplates provides a great amount of flexibility. Offered in single gang or dual gang styles, these faceplates can be used with flush or angled modules. Up to four angled ports can be installed in a single gang faceplate, providing an efficient solution for high capacity applications.

**Short Description** Modular Faceplate Angled Dual Insert With Icons, ABS, White, 2/pkg

**Global Part Name** FPMIAD15

**Technical Description** Modular Faceplate Angled Dual Insert With Icons,White

**Variant** Modular

**Material** Acrylonitrile Butadiene Styrene (ABS)

**Material Shortcut** ABS

**UL Listed (US and Canada)** Yes

**UL Listed (US)** Yes

**Package Quantity (Imperial)** 2

**Package Quantity (Metric)** 2

**Customs Number** 3925900000