

## Specification Sheet

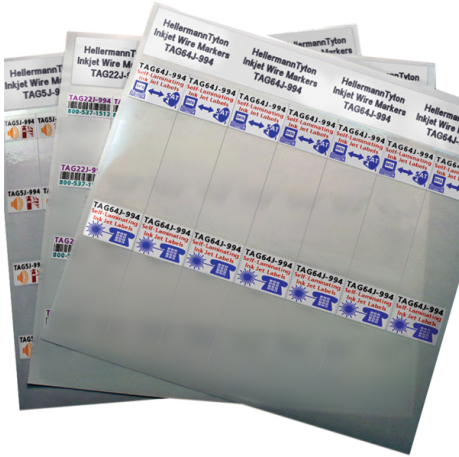
Part Number: TAG5J-994

HellermannTyton Ink Jet labels are sheet fed for easy loading and fast printing.

Ink Jet labels are made with high temperature materials and adhesives so that they will not be affected by the high heat of laser printing.

Ink Jet labels are printable using toner for long term UV exposure.

Ink Jet labels come in a variety of label sizes and types to fit most applications.



Inkjet Label, Self-Laminating, .80" x .50" x 1.63", 40 Per Sheet, PET, White, 1000/pkg

**Article Number** 593-05994

**Type** TAG5J

**Color** White (WH)

**Quantity Per** pack

**Product Description** HellermannTyton's inkjet self-laminating labels are smear resistant, allowing them to be handled immediately. The labels are made of a heat resistant 1mm polyester film with a strong acrylic based adhesive. The printable area is a special ink-receptive film that absorbs the ink as it is printed on an inkjet printer.

**Short Description** Inkjet Label, Self-Laminating, .80" x .50" x 1.63", 40 Per Sheet, PET, White, 1000/pkg

**Global Part Name** TAG5J-994-WH

**Width W (Imperial)** 0.8

**Width W (Metric)** 20.3

**Bundle Diameter Min (Imperial)** 0.149

**Bundle Diameter Min (Metric)** 3.80

**Bundle Diameter Max (Imperial)** 0.32

**Bundle Diameter Max (Metric)** 8.00

**Thickness T (Metric)** 35.0

**Width of Liner (Metric)** 215.00

**Width of Liner (Imperial)** 8.5

**Outside Diameter Max (Imperial)** 0.315

**Outside Diameter Min (Metric)** 3.8

**Outside Diameter Min (Imperial)** 0.15

**Outside Diameter Max (Metric)** 8.00

<b>Material</b>	Type 994, Polyethylene Terephthalate (994)
<b>Material Shortcut</b>	994
<b>Adhesive</b>	Acrylic
<b>Halogen Free</b>	No
<b>Adhesive Operating Temperature</b>	-40°F to +176°F (-40°C to +80°C)
<b>Operating Temperature</b>	-40°F to +302°F (-40°C to +150°C)
<b>Reach Compliant (Article 33)</b>	Yes
<b>ROHS Compliant</b>	Yes
<b>Package Quantity (Imperial)</b>	1000
<b>Package Quantity (Metric)</b>	1000
<b>Customs Number</b>	3919905060
<b>Labels per Column</b>	4
<b>Labels per Row</b>	10