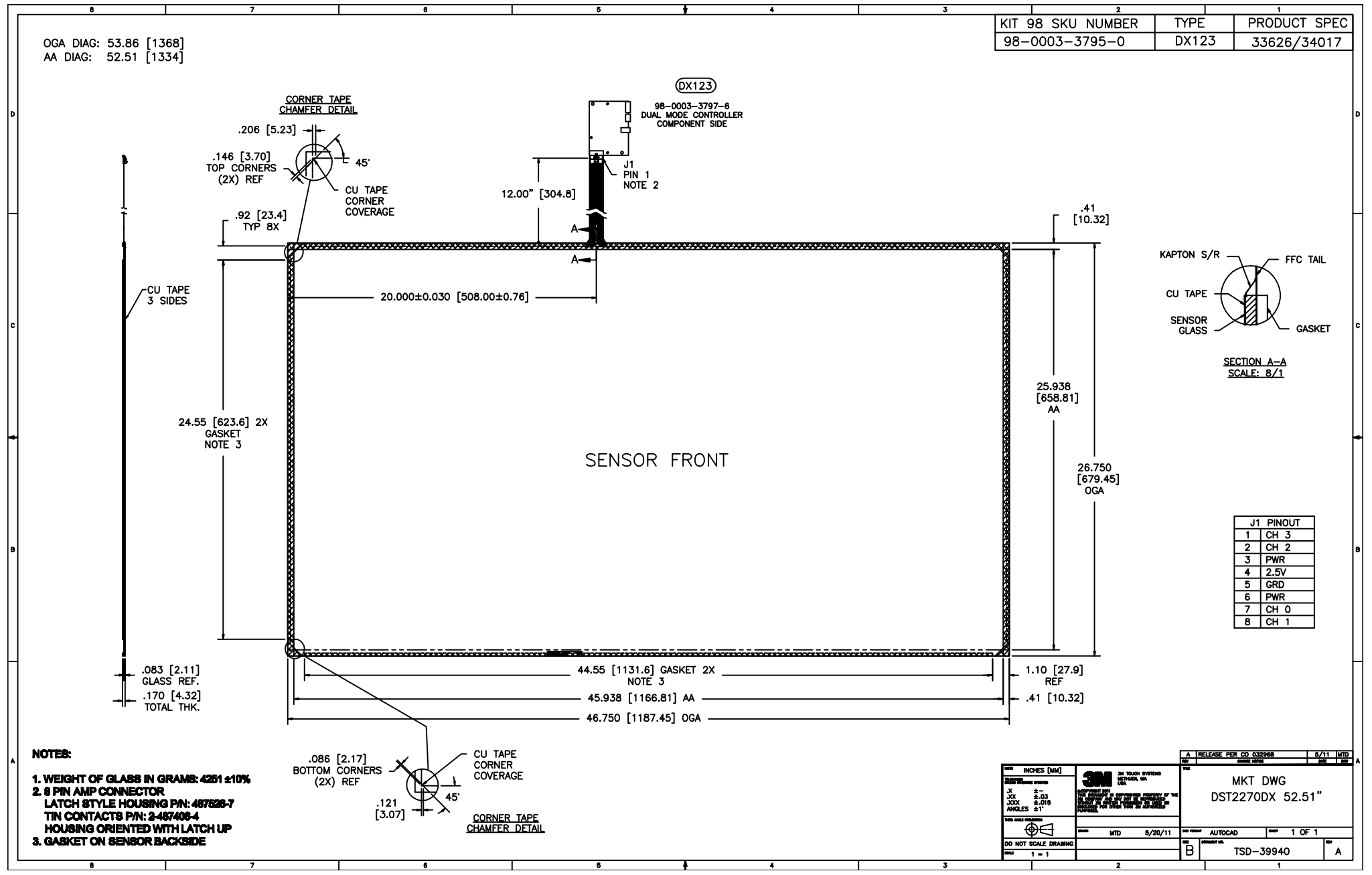


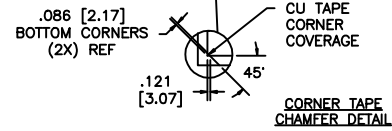
OGA DIAG: 53.86 [1368]  
 AA DIAG: 52.51 [1334]

|                   |       |              |
|-------------------|-------|--------------|
| KIT 98 SKU NUMBER | TYPE  | PRODUCT SPEC |
| 98-0003-3795-0    | DX123 | 33626/34017  |



| J1 PINOUT |      |
|-----------|------|
| 1         | CH 3 |
| 2         | CH 2 |
| 3         | PWR  |
| 4         | 2.5V |
| 5         | GRD  |
| 6         | PWR  |
| 7         | CH 0 |
| 8         | CH 1 |

- NOTES:**
1. WEIGHT OF GLASS IN GRAMS: 4261 ±10%
  2. 8 PIN AMP CONNECTOR LATCH STYLE HOUSING P/N: 487628-7 TIN CONTACTS P/N: 2-487408-4 HOUSING ORIENTED WITH LATCH UP
  3. GASKET ON SENSOR BACKSIDE



|  |   |
|--|---|
| UNIT: INCHES (MM)                      | 3M 3M TOUCH SYSTEMS<br>METHUEN, MA<br>USA |
| FINISH: AS SUPPLIED                    |   |
| TOLERANCES UNLESS OTHERWISE SPECIFIED: |   |
| FRACTIONS ±.005                        |   |
| DECIMALS ±.003                         |   |
| ANGLES ±.010                           |   |
| ANGLES ±1°                             |   |
| DATE: 5/20/11                          |   |
| DO NOT SCALE DRAWING                   |   |
| SCALE: 1 = 1                           |   |

|                             |        |     |
|-----------------------------|--------|-----|
| RELEASE PER CD 032968       | 5/11   | MTD |
| MKT DWG<br>DST2270DX 52.51" |        |     |
| AUTOCAD                     | 1 OF 1 |     |
| TSD-39940                   |        | A   |