

CUSTOMER TERMINAL	RoHS	LEAD(Pb)-FREE
Sn96%, Ag4%	Yes	Yes

more than you expect



**ELECTRICAL SPECIFICATIONS @ 25°C unless otherwise noted:**

PARAMETER	TEST CONDITIONS	VALUE
⑥B D.C. RESISTANCE	1-3 @20°C	0.328 ohms max.
⑥B D.C. RESISTANCE	6-4 @20°C	0.413 ohms max.
INDUCTANCE	1-3 100kHz, 10mVAC, Ls	384uH ±30%
DIELECTRIC	1-6 6250Vrms, 1 second	5000Vrms, 1 minute
TURNS RATIO	(6-4):(1-3)	1.63:1, ±1%

**GENERAL SPECIFICATIONS:**

OPERATING TEMPERATURE RANGE: -40°C to +125°C including temp rise.

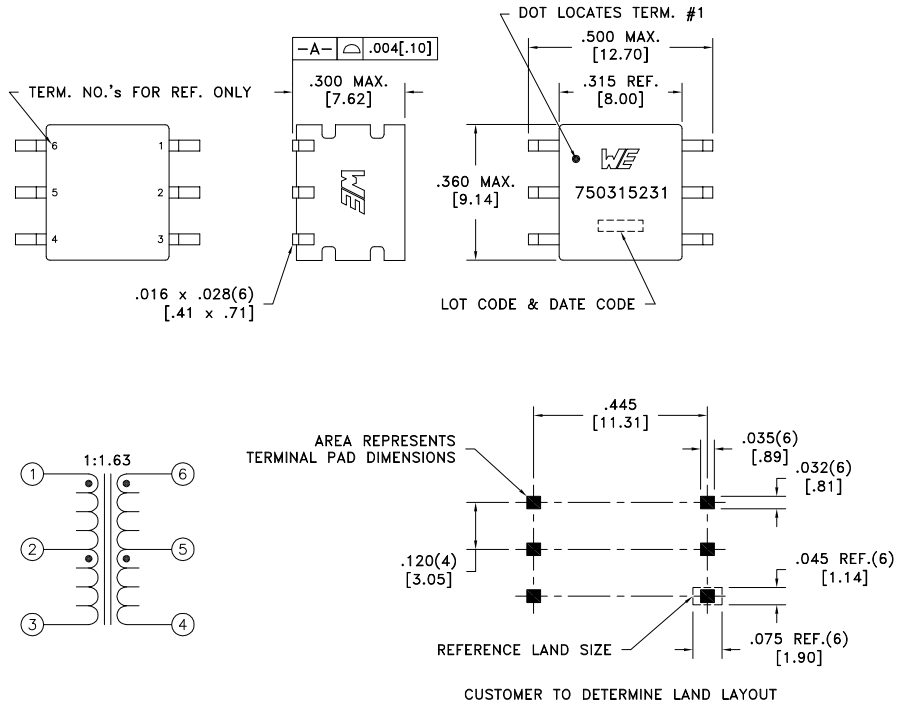
CURRENT RATING: 125mADC

VOLTAGE-TIME: 10.7VuS

Designed to comply with the following requirements as defined by IEC60950-1, EN60950-1, UL60950-1/CSA60950-1 and AS/NZS60950.1:

- ⑥B - Reinforced insulation for a primary circuit at a working voltage of 265Vrms, 400Vpeak, Overvoltage Category II.

COPLANARITY: All 6 terminals must lie on a plane within .004 [.10] of Surface A after lead tinning.



Wire insulation & RoHS status not affected by wire color.  
Wire insulation color may vary depending on availability.

REV.	DATE	Packaging Specifications Method: <b>Tape &amp; Reel</b> PKG-0948 www.we-online.com/midcom		Tolerances unless otherwise specified: Angles: ±1° Fractions: ±1/64 Decimals: ±.005 [.13] Footprint: ±.005 [.13]	DRAWING TITLE <b>TRANSFORMER</b>	PART NO. <b>750315231</b>
6C	3/19					
6B	1/18					
6A	3/15	SEE REVISION SHEET FOR REVISION LEVEL		This drawing is dual dimensioned. Dimensions in brackets are in millimeters.	eiSos p/n: 750315231	SPECIFICATION SHEET 1 OF 1

