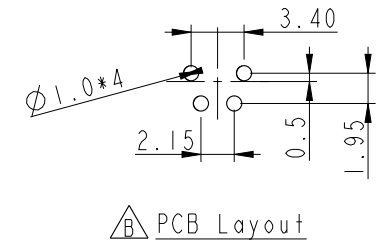
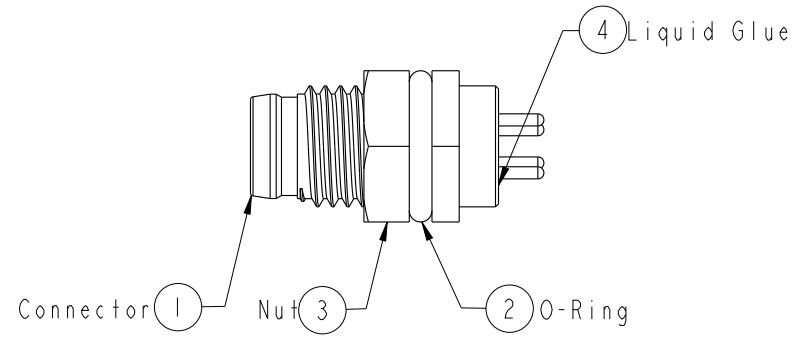
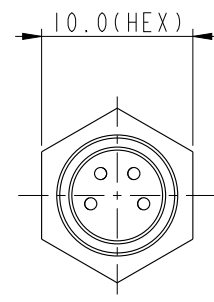
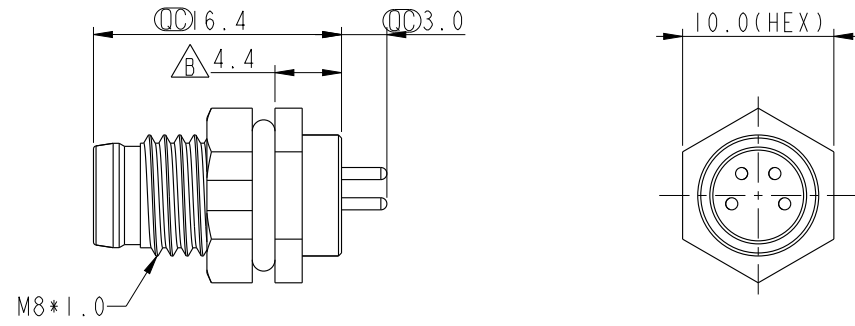
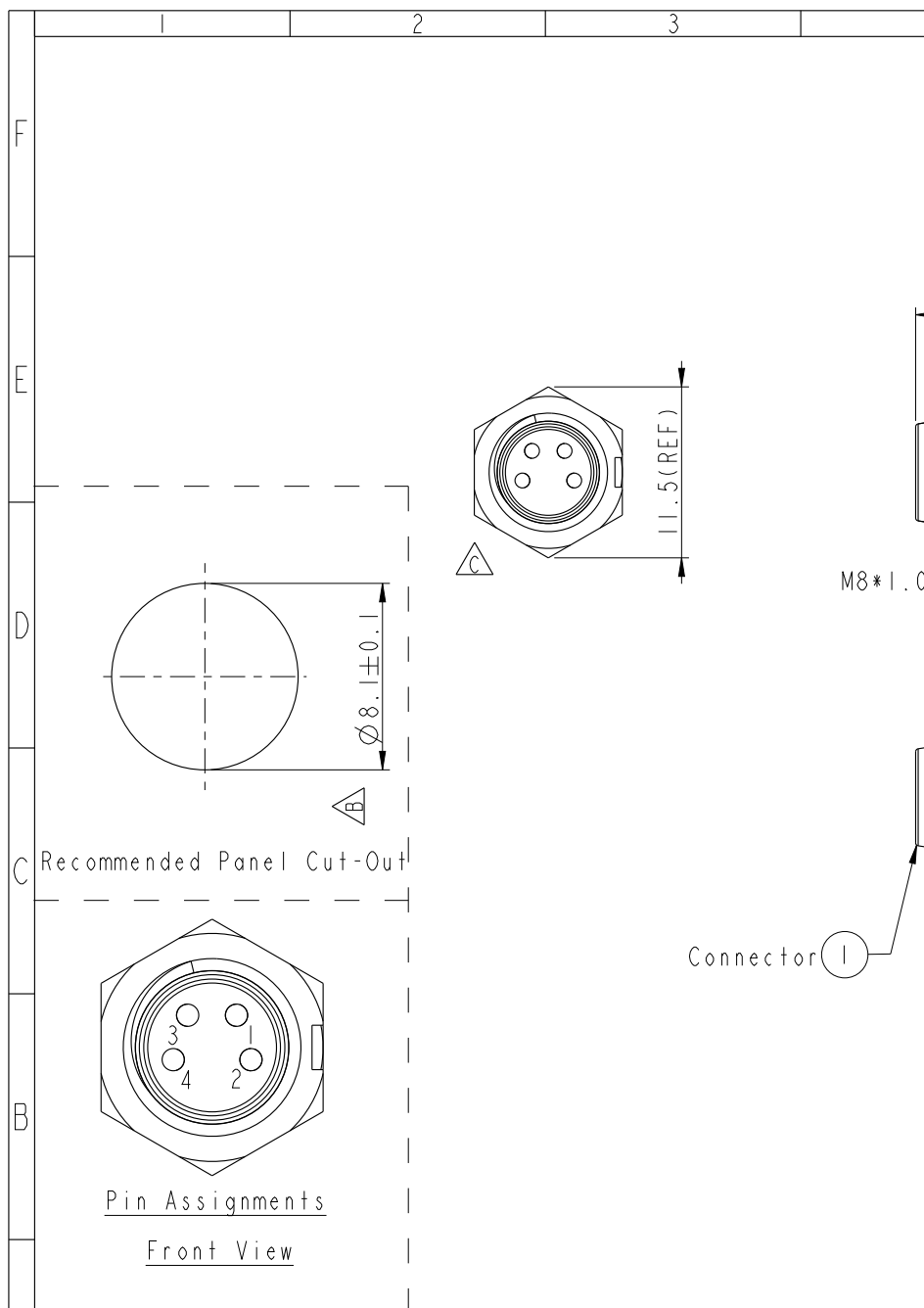


THIS DOCUMENT IS SUBJECT TO CHANGE WITHOUT NOTICE. IT IS CONFIDENTIAL AND A PROPERTY OF AMPHENOL LTW. DISCLOSURE TO THIRD PARTY HAS TO BE AUTHORIZED BY AMPHENOL LTW.

REV.	ECN NO.	DATE	SIGN	DESCRIPTION
B	LEN-910194	2009/01/07	Ivan Lin	Change rev. to ECN note
C	LEN-080067	2010/08/16	Zhang Xing	Change View.
D	C200518	2020/04/25	Peng	\triangle XI



- \triangle Note:
- * ⌀ Important Dimension To Check.
 - * Waterproof Rate: IP67
 - * Housing: Nylon+GF, Black
 - * Male Pin: Copper Alloy, Gold Plated
 - * Nut: Nylon+GF, Black
 - * O-Ring: EPDM, Black
 - * Panel Thickness For Snap-in Type Max 3.0mm
 - * Panel Thickness For Screw Type Max 1.9mm

UNIT: mm			TITLE \triangle M8 Conn Panel Screw 4P M Conn M Pin
TOLERANCE .X ±0.25 .XX ±0.1 .XXX ±0.05 ANGLES ±1°	SCALE 2:1	SIZE A4	SHEET 1 OF 1
REV. D	WC-REV. A.3	⌀ : Inspection item	

Amphenol LTW
安費諾亮泰企業股份有限公司

ITEM NO 8P-04PMMP-SF7001	DRAWN BY Zhang Xing	DATE 2010/08/16
DWG NO 8P-04PMMP-SF7001	CHECKED BY Tina	DATE 2010/08/16
CUSTOMER ALTW	APPROVED BY Can	DATE 2010/08/16