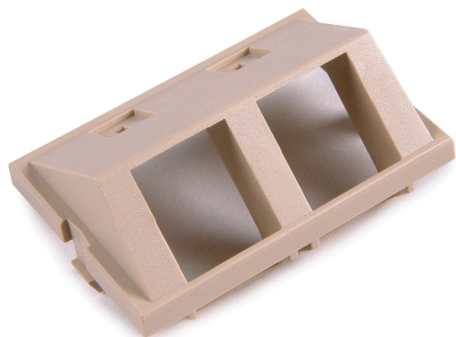


Specification Sheet

Part Number: FPMIAD15-I



Faceplate inserts can be loaded and unloaded from the front
Single gang faceplate will accept 3U of inserts

Dual gang faceplate will accept 6U of inserts

Modular Faceplate Angled Dual Insert With Icons, ABS, Ivory, 2/pkg

Article Number 854-35365

Type FPMIAD15

Color Ivory (IV)

Quantity Per bag

Product Description HellermannTyton's line of modular faceplates provides a great amount of flexibility. Offered in single gang or dual gang styles, these faceplates can be used with flush or angled modules. Up to four angled ports can be installed in a single gang faceplate, providing an efficient solution for high capacity applications.

Short Description Modular Faceplate Angled Dual Insert With Icons, ABS, Ivory, 2/pkg

Global Part Name FPMIAD15

Technical Description Modular Faceplate Angled Dual Insert With Icons, Ivory

Variant Modular

Material Acrylonitrile Butadiene Styrene (ABS)

Material Shortcut ABS

UL Listed (US and Canada) Yes

UL Listed (US) Yes

Package Quantity (Imperial) 2

Package Quantity (Metric) 2

Customs Number 3925900000