

## Specification Sheet

Part Number: MB5A10C2

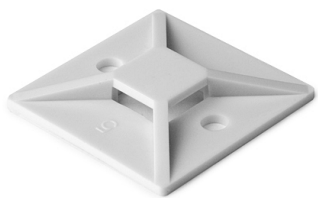
For use with HellermannTyton T18 - T150 cable ties to provide stability when securing bundles.

4-way opening allows cable ties to be installed parallel or perpendicular to bundles.

The rubber-based adhesive is an economical choice ideal for indoor applications, with a static load weight of 2.1 lb.

Two predrilled holes extend mounting options and solutions.

Extended adhesive liner is easy to remove quickly.



Rubber Adhesive Cable Tie Mount, 1.49" x 1.49", Use With T18-T150 Cable Tie, PA66, White, 100/pkg

**Article Number** 151-28529

**Type** MB5A

**Color** White (WH)

**Quantity Per** bag

**Product Description** MB5A adhesive mounts are for use with HellermannTyton T18 - T150 Series cable ties to provide stability when securing bundles. The rubber adhesive-backed mounts can be used to secure a bundle and have two predrilled holes to extend mounting options.

<b>Short Description</b>	Rubber Adhesive Cable Tie Mount, 1.49" x 1.49", Use With T18-T150 Cable Tie, PA66, White, 100/pkg
<b>Global Part Name</b>	MB5A-PA66-WH
<b>Length L (Imperial)</b>	1.49
<b>Length L (Metric)</b>	37.7
<b>Fixation Method</b>	Screw Mounting and Adhesive
<b>Width W (Imperial)</b>	1.49
<b>Width W (Metric)</b>	37.7
<b>Cable Ties</b>	T18 - T150
<b>Height H (Imperial)</b>	.28
<b>Height H (Metric)</b>	7.1
<b>Cable Tie Width Max (Imperial)</b>	0.35
<b>Cable Tie Width Max (Metric)</b>	8.9
<b>Mounting Hole Diameter D (Imperial)</b>	0.19
<b>Mounting Hole Diameter D (Metric)</b>	4.8 mm
<b>Mounting Hole Diameter D Max (Metric)</b>	4.8

**Mounting Hole Centers (Imperial)** 1.0

**Material** Polyamide 6.6 (PA66)

**Material Shortcut** PA66

**Adhesive** Synthetic rubber with base of polyethylene foam

**Flammability** UL 94 V-2 (excluding adhesive)

**Adhesive Operating Temperature** 0°F to +150°F (-18 °C to +66 °C)

**Operating Temperature** -40°F to +185°F (-40°C to +85°C)

**Reach Compliant (Article 33)** Yes

**ROHS Compliant** Yes

**Package Quantity (Imperial)** 100

**Package Quantity (Metric)** 100

**Customs Number** 3926909988

