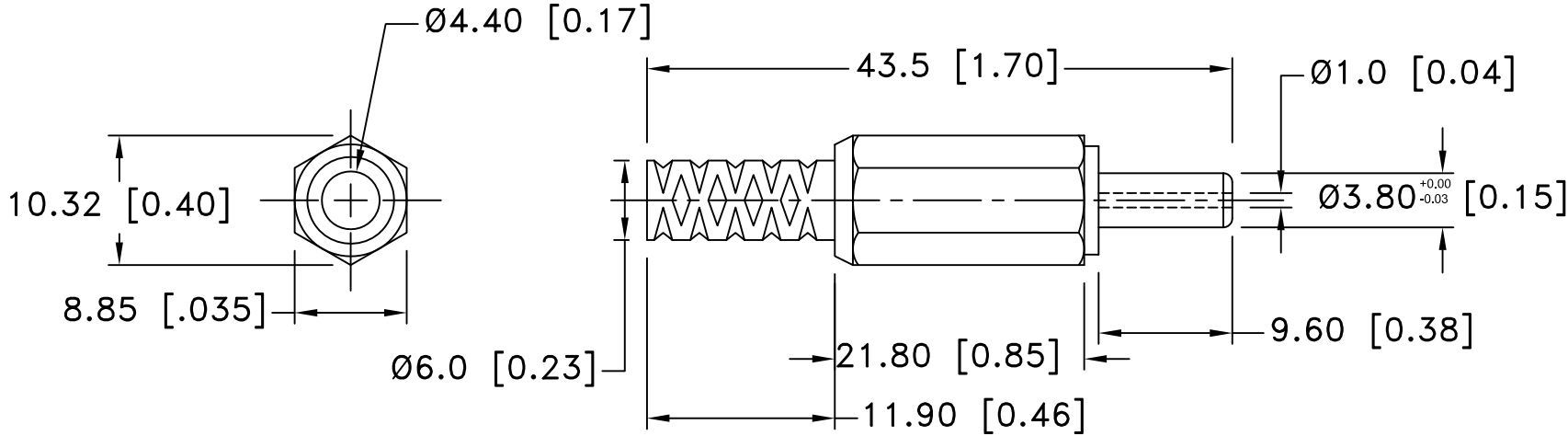



Date	SYM	REVISION RECORD	AUTH	DR.	CK.
8/16/03	A	REVISED TITLE	T.B.	B.S.	
8/18/06	B	ADDED "ROHS COMPLIANT"	T.B.	B.S.	
3/14/14	C	DIM. Ø4.40 WAS Ø4.00 DIM. 43.50 WAS 41.00 DIM. 9.60 WAS 9.30 DIM. 21.80 WAS 17.50 DIM. 11.90 WAS 13.20 DIM. Ø6.0 WAS Ø5.50 DIM. 8.85 WAS 8.00 DIM. 10.32 WAS 9.00 INSULATOR MAT. WAS ABS COVER MAT. WAS PP	T.B.	B.S.	



NOTES:  
 MAX. RATING: 12V 5A.  
 MATERIAL:  
 1) INSULATOR: POM  
 2) PLUG: BRASS, NICKEL PLATED  
 3) COVER: PE  
 ROHS 2 COMPLIANT

Tolerance (Except as noted)	 <b>Memory Protection Devices, Inc</b> 200 Broad Hollow Road, Farmingdale, New York 11735		
decimal ±.5 (.020)		Scale	Drawn By B.S.
Fractional ± .8 (.030)	Title DC PLUG- 1.0 X 3.8mm MOLDED WITH STRAIN RELIEF		
Angular ± 3°	Date 3/14/14	Drawing Number EP505-A	