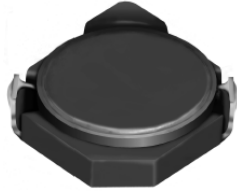


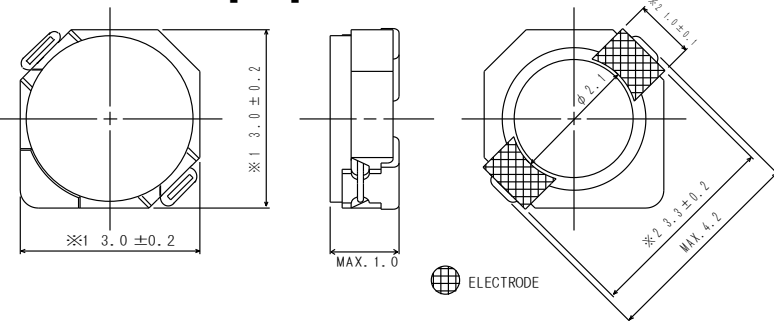
# SMD Power Inductor CDRH2D09C



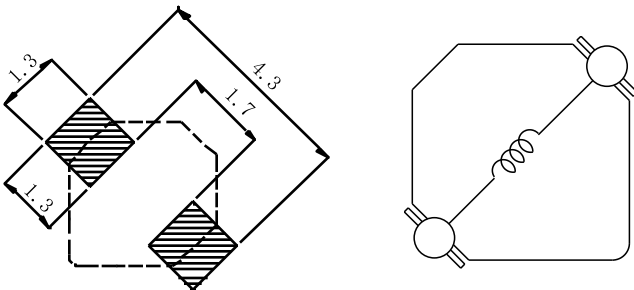
## Description

- Ferrite drum core construction.
- Magnetically shielded.
- L × W × H: 3.2 × 3.2 × 1.0 mm Max.
- Product weight: 28mg(Ref.)
- Moisture Sensitivity Level: 1
- RoHS compliance.

## Dimension - [mm]



## Land pattern and Schematics - [mm]



## Environmental Data

- Operating temperature range: -40°C ~ +105°C (including coil's self temperature rise)
- Storage temperature range: -40°C ~ +105°C
- Solder reflow temperature: 260 °C peak.

## Packaging

- Carrier tape and reel packaging
- 7.0" diameter reel
- 1500pcs per reel

## Applications

- Ideally used in Mobilephone, PDA, MP3, DSC/DVC, etc as DC-DC converter inductors.



### Electrical Characteristics

Part Name	Stamp	Inductance ( $\mu\text{H}$ ) [within] ※1	D.C.R.( $\Omega$ ) Max. (Typ.) (at 20°C)	Saturation Current (A) ※2		Temperature Rise Current (A) ※3
				at 20°C	at 105°C	
CDRH2D09CNP-1R2NC	A	1.2 $\pm$ 25%	78m(62.4m)	0.83	0.64	1.55
CDRH2D09CNP-1R5NC	B	1.5 $\pm$ 25%	88m(70.6m)	0.70	0.52	1.35
CDRH2D09CNP-2R4NC	D	2.4 $\pm$ 25%	119m(95.0m)	0.58	0.45	1.10
CDRH2D09CNP-3R3NC	F	3.3 $\pm$ 25%	174m(139m)	0.50	0.38	0.90
CDRH2D09CNP-4R7NC	H	4.7 $\pm$ 25%	238m(190m)	0.38	0.30	0.80
CDRH2D09CNP-6R4NC	K	6.4 $\pm$ 25%	290m(232m)	0.36	0.27	0.65
CDRH2D09CNP-8R2NC	L	8.2 $\pm$ 25%	0.40(0.32)	0.31	0.25	0.56
CDRH2D09CNP-100NC	M	10 $\pm$ 25%	0.50(0.40)	0.30	0.23	0.51
CDRH2D09CNP-120NC	N	12 $\pm$ 25%	0.55(0.44)	0.27	0.20	0.45
CDRH2D09CNP-150NC	P	15 $\pm$ 25%	0.65(0.52)	0.24	0.18	0.42
CDRH2D09CNP-180NC	Q	18 $\pm$ 25%	0.77(0.61)	0.22	0.17	0.38
CDRH2D09CNP-220NC	R	22 $\pm$ 25%	0.94(0.75)	0.20	0.15	0.35
CDRH2D09CNP-270NC	S	27 $\pm$ 25%	1.11(0.88)	0.16	0.12	0.32

※1. Inductance measuring condition: at 100kHz.

※2. Saturation current: The value of D.C. current when the inductance decreases to 65% of it's nominal value.

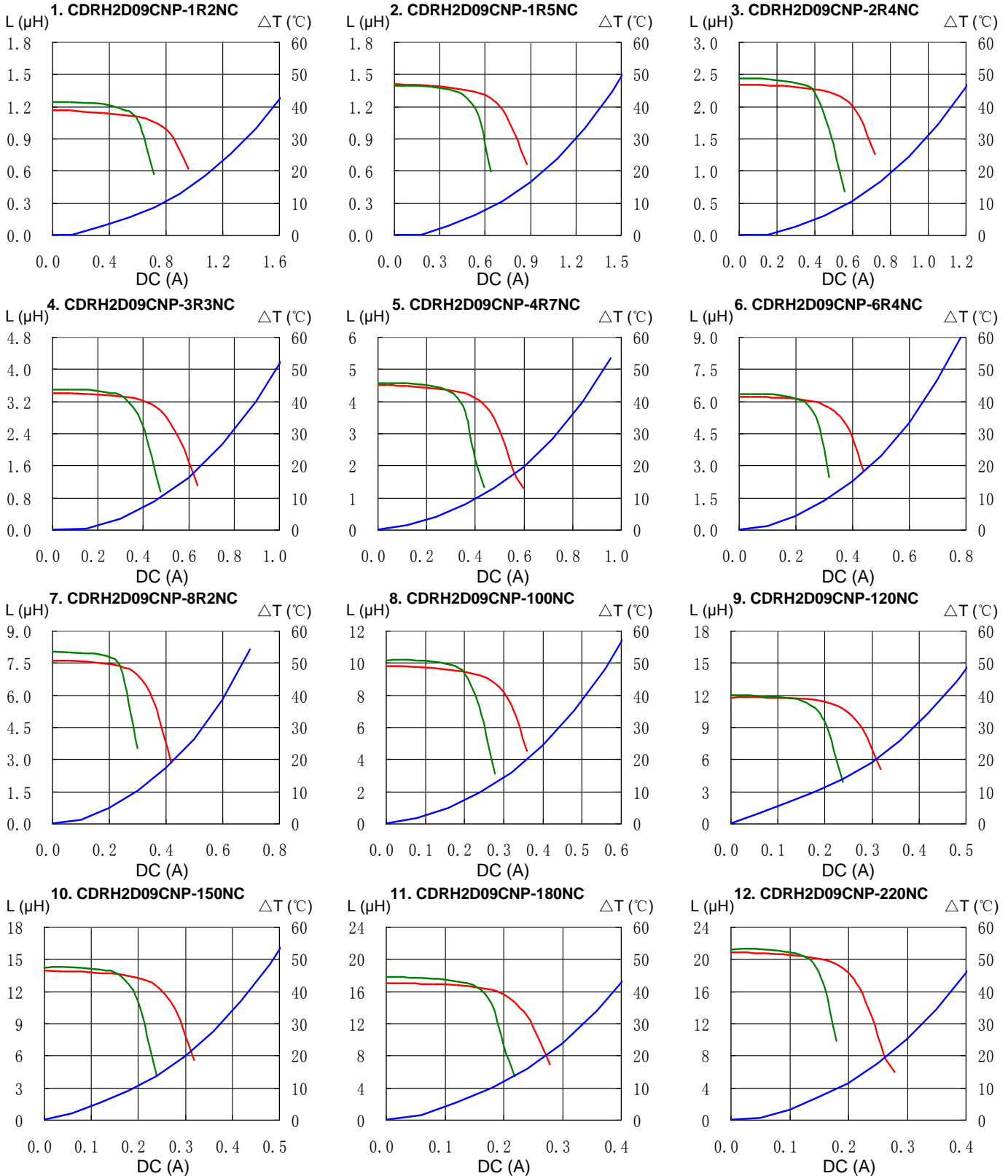
※3. Temperature rise current: The value of D.C. current when the temperature rise is  $\Delta t=40^\circ\text{C}$  ( $T_a=20^\circ\text{C}$ ).

# SMD Power Inductor CDRH2D09C

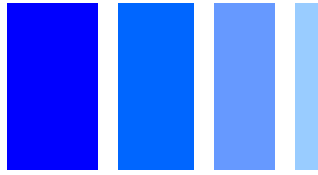


## Saturation Current & Temperature Rise Graph

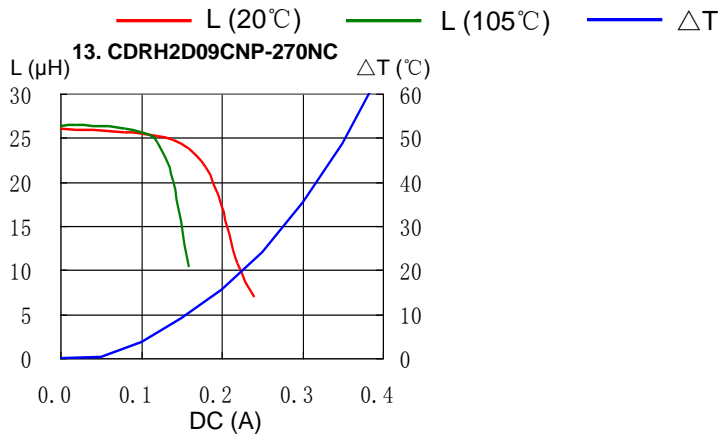
— L (20°C) — L (105°C) —  $\Delta T$



# SMD Power Inductor CDRH2D09C

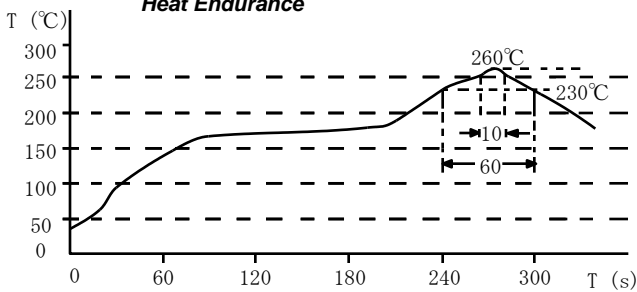


## Saturation Current & Temperature Rise Graph

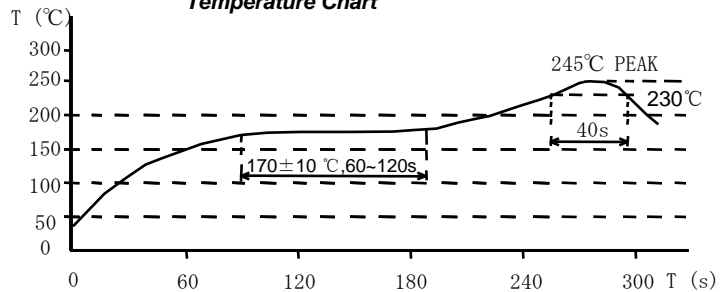


## Solder Reflow Condition

Heat Endurance



Temperature Chart



Please refer to the sales offices on our website - <http://www.sumida.com>

### Hong Kong

Tel.+852-2880-6781  
FAX.+852-2565-9600  
[sales@hk.sumida.com](mailto:sales@hk.sumida.com)

### Saitama(Japan)

Tel.+81-48-691-7300  
FAX.+81-48-691-7340  
[sales@jp.sumida.com](mailto:sales@jp.sumida.com)

### Chicago

Tel.+1-847-545-6700  
FAX. +1-847-545-6720  
[sales@us.sumida.com](mailto:sales@us.sumida.com)

### Shanghai

Tel.+86-21-5836-3299  
FAX.+86-21-5836-3266  
[shanghai.sales@cn.sumida.com](mailto:shanghai.sales@cn.sumida.com)

### Seoul

Tel.+82-2-6237-0777  
FAX.+82-2-6237-0778  
[sales@kr.sumida.com](mailto:sales@kr.sumida.com)

### Obernzell

Tel.+49-8591-937-0  
FAX. +49-8591-937-103  
[contact@eu.sumida.com](mailto:contact@eu.sumida.com)

### Shenzhen

Tel.+86-755-8291-0228  
FAX.+86-755-8291-0338  
[shenzhen.sales@cn.sumida.com](mailto:shenzhen.sales@cn.sumida.com)

### Singapore

Tel.+65-6296-3388  
FAX.+65-6841-4426  
[sales@sg.sumida.com](mailto:sales@sg.sumida.com)

### Neumarkt

Tel.+49-9181-4509-110  
FAX. +49-9181-4509-310  
[infocomp@eu.sumida.com](mailto:infocomp@eu.sumida.com)

### Taipei

Tel.+886-2-8751-2737  
FAX.+886-2-8751-2738  
[sales@tw.sumida.com](mailto:sales@tw.sumida.com)

### San Jose

Tel.+1-408-321-9660  
FAX.+1-408-321-9308  
[sales@us.sumida.com](mailto:sales@us.sumida.com)