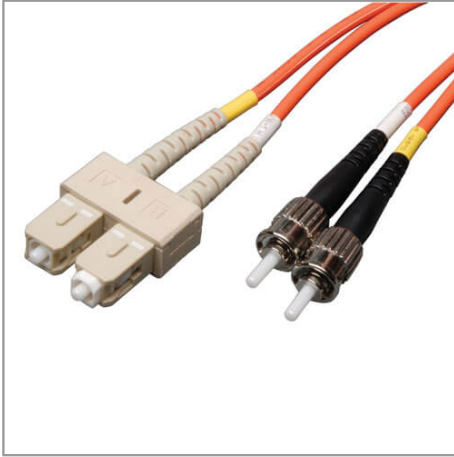


## Duplex Multimode 62.5/125 Fiber Patch Cable (SC/ST), 10M (33 ft.)

MODEL NUMBER: **N304-10M**



### Highlights

- Premium PVC 62.5/125µm multimode patch cables
- Attenuation loss meets or exceeds the latest industry standards

### System Requirements

- Any fiber optic hardware or NIC card requiring multimode duplex cable with SC/ST connectors

### Package Includes

- 10M (32.8-ft.) duplex MMF cable ST/SC 62.5/125 fiber

### Description

Tripp Lite's 10M (32.8-ft.) multimode duplex fiber optic SC/ST patch cable is manufactured from 62.5/125 zipcord fiber. The cable has ST to SC connectors, a PVC jacket and is FDDI and OFNR rated. Duplex multimode fiber is most commonly used in LAN applications.

### Features

- Manufactured from 62.5/125 duplex (zipcord) fiber
- PVC jacket
- Length: 10M (32.8-ft.) Connectors: 2 ST to 2 SC connectors
- Insertion loss testing performed on every connector (0.2db typical) and provided with cable
- Beveled edge on ends of glass makes insertion of plug a breeze
- Fiber made from glass (not a polymer)
- Color coded shrouds identify transmit and receive
- Fiber optic distributed data interface (FDDI) rated
- OFNR (riser rated)

## Specifications

OVERVIEW	
UPC Code	037332122551
Technology	Multimode
Optical Mode	OM1
PHYSICAL	
Cable Jacket Color	Orange



Connector Color	White; Black
Cable Jacket Material	LSZH
Cable Jacket Rating	OFNR
Clad Diameter (microns)	125
Core Diameter (microns)	62.5
Number of Fibers	2
Cable Length (ft.)	32.8
Cable Length (m)	10.00
Cable Length (in.)	393.7
Minimum Bend Radius	20MM (Dynamic); 10MM (Static)
Shipping Dimensions (hwd / cm)	22.86 x 17.78 x 1.27
Shipping Dimensions (hwd / in.)	9.00 x 7.00 x 0.50
Shipping Weight (kg)	0.14
Shipping Weight (lbs.)	0.30
<b>ENVIRONMENTAL</b>	
Operating Temperature Range	-4 to 140 °F (-20 to 60 °C)
Storage Temperature Range	-4 to 140 °F (-20 to 60 °C)
Operating Humidity Range	5% to 85% RH, Non-Condensing
Storage Humidity Range	35% to 65% RH, Non-Condensing
<b>COMMUNICATIONS</b>	
Network Compatibility	1 Gbps (Gigabit); 10 Gbps
Attenuation @ 850NM	3.0dB/Km
Insertion Loss	0.20dB
<b>CONNECTIONS</b>	
Side A - Connector 1	SC DUPLEX (MALE)
Side B - Connector 1	ST DUPLEX (MALE)
Endface Polish	PC
<b>FEATURES &amp; SPECIFICATIONS</b>	
Push/Pull Tabs	No
Breakout	No
Trunk	No
<b>STANDARDS &amp; COMPLIANCE</b>	



**Tripp Lite**  
1111 W. 35th Street  
Chicago, IL 60609 USA  
Telephone: 773.869.1234  
[www.tripplite.com](http://www.tripplite.com)

Certification & Compliance	RoHS; REACH
<b>WARRANTY</b>	
Product Warranty Period (Worldwide)	Lifetime limited warranty

© 2022 Tripp Lite. All rights reserved. All product and company names are trademarks or registered trademarks of their respective holders. Use of them does not imply any affiliation with or endorsement by them. Tripp Lite has a policy of continuous improvement. Specifications are subject to change without notice. Tripp Lite uses primary and third-party agencies to test its products for compliance with standards. See a list of Tripp Lite's testing agencies: <https://www.tripplite.com/products/product-certification-agencies>