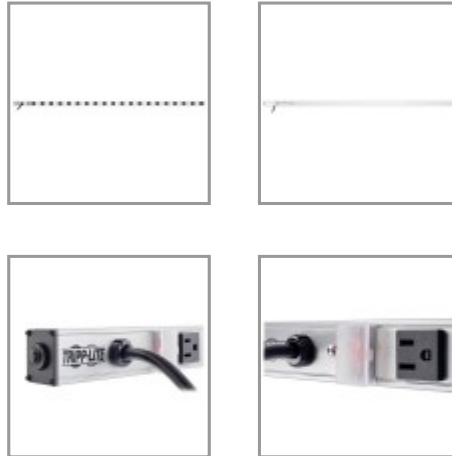


## 20-Outlet Vertical Power Strip, 120V, 15A, 15 ft. (4.57 m) Cord, 5-15P, 60 in.

MODEL NUMBER: **PS6020**



### Highlights

- 20 outlets
- Convenient and safe covered, on/off switch
- 15-amp circuit breaker
- 15-ft. cord
- 60" length

### Package Includes

- PS6020
- Mounting hardware
- Instruction manual

### Features

- Sturdy all-metal 60 inch corded strip format with 2.795 inch center-to-center outlet spacing
- Included mounting hardware
- Includes 20 NEMA 5-15R output receptacles
- Ideal for horizontal or vertical raceway style power distribution in office, workbench, industrial, networking and telecom applications
- Lighted power switch with locking transparent cover prevents accidental shutoff
- 15 amp electrical capacity with circuit breaker
- 120V AC, 50/60Hz electrical compatibility

## Specifications

OVERVIEW	
UPC Code	037332011473
INPUT	
Nominal Input Voltage(s) Supported	120V AC
Recommended Electrical Service	15A 120V
Input Cord Gauge Type	14 gauge; SJT
Voltage Compatibility (VAC)	120
Input Plug Type	NEMA 5-15P
Input Cord Length (ft.)	15
Input Cord Length (m)	4.57



Integrated Cord Clip	No
<b>OUTPUT</b>	
Frequency Compatibility	50 / 60 Hz
Output (Watts)	1800
Output Receptacles	(20) 5-15R
Circuit Breaker (amps)	15
Transformer Accommodation	(10) Yes
Right-Angle Outlets	No
Outlet Spacing	2.795 in.
<b>USER INTERFACE, ALERTS &amp; CONTROLS</b>	
Switches	Lighted 2 position switch controls power to all outlets
Locking Switch Cover	Transparent on/off switch cover prevents accidental turn-off
<b>PHYSICAL</b>	
Material of Construction	Aluminum
Color	Silver
Power Cord Color	Black
Form Factors Supported	Supports horizontal or vertical raceway style power distribution in office, workbench, industrial, networking and telecom applications
Housing Color	Silver
Included Mounting Accessories	Includes mounting clips
Mounting Holes or Slots	No
Outlets Measurement (Center to Center)	69mm
Receptacle Color	Black
Shipping Dimensions (hwd / cm)	8.64 x 6.60 x 162.56
Shipping Dimensions (hwd / in.)	3.40 x 2.60 x 64.00
Shipping Weight (kg)	2.22
Shipping Weight (lbs.)	4.90
Unit Dimensions (hwd / in.)	60 x 1.5 x 1.5
Unit Dimensions (hwd / cm)	152.4 x 3.8 x 3.8
Unit Weight (lbs.)	5.0
Unit Weight (kg)	2.27
<b>FEATURES &amp; SPECIFICATIONS</b>	
Antimicrobial	No



**Tripp Lite**  
1111 W. 35th Street  
Chicago, IL 60609 USA  
Telephone: 773.869.1234  
[www.tripplite.com](http://www.tripplite.com)

Built-In Circuit Breaker	Yes
<b>STANDARDS &amp; COMPLIANCE</b>	
Canada	cUL
UL1363 (Power Tap)	UL1363
<b>WARRANTY</b>	
Product Warranty Period (Worldwide)	Lifetime limited warranty

© 2022 Tripp Lite. All rights reserved. All product and company names are trademarks or registered trademarks of their respective holders. Use of them does not imply any affiliation with or endorsement by them. Tripp Lite has a policy of continuous improvement. Specifications are subject to change without notice. Tripp Lite uses primary and third-party agencies to test its products for compliance with standards. See a list of Tripp Lite's testing agencies: <https://www.tripplite.com/products/product-certification-agencies>