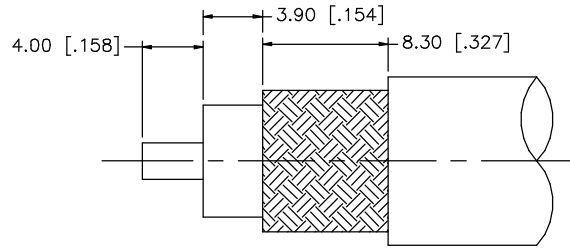
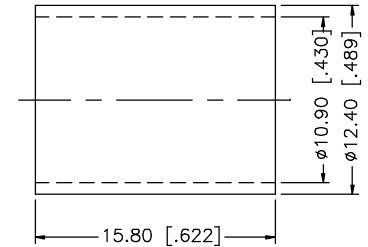
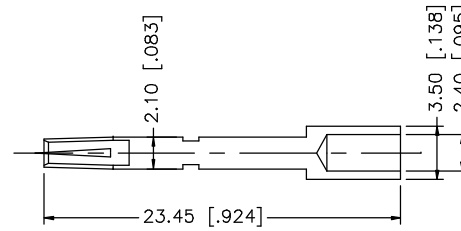
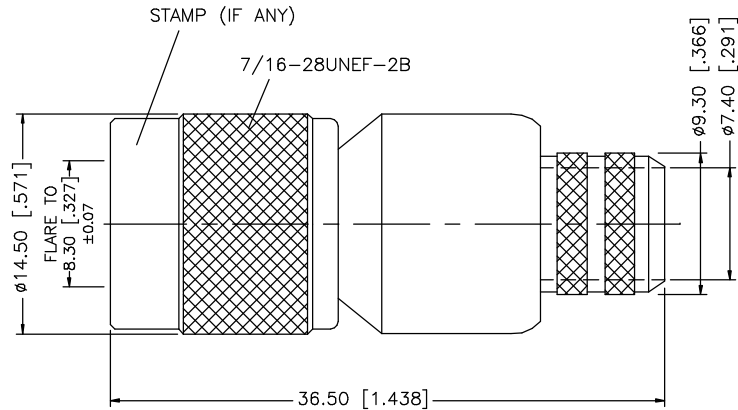


REV.	DATE	DESCRIPTION
A	08/28/98	REDIMENSION/ MODIFY CONTACT DIMENSIONS
B	06/05/03	UPDATE DRAWING FORMAT



RECOMMENDED CABLE STRIPPING DIMENSIONS



NOTE:

1. CRIMPED FERRULE
HEX CRIMP SIZE .429"
2. CRIMPED CONTACT PIN
HEX CRIMP SIZE .118"

9					<p>UNLESS OTHERWISE SPECIFIED DIMENSIONS ARE IN MILLIMETERS. DIMENSIONS IN [] ARE IN INCHES AND FOR CUSTOMER REFERENCE ONLY.</p> <p>UNLESS OTHERWISE SPECIFIED TOLERANCES FOR MILLIMETERS ARE: 0.5 - 8mm ± 0.20mm 8 - 30mm ± 0.40mm 30 - 120mm ± 0.50mm</p> <p>UNLESS OTHERWISE SPECIFIED TOLERANCES FOR INCHES ARE: .020 - .315 = ± 0.007" .315 - 1.180 = ± 0.015" 1.180 - 4.724 = ± 0.020"</p>	APPROVALS	DATE	<h1 style="color: blue; text-align: center;">Amphenol Connex</h1>				
8						DRAWN	G.R.S.					06/05/03
7						CHECKED						
6						ISSUED			PART DESCRIPTION			
5						SHEET	1 OF 1		<p style="text-align: center;">TNC REVERSE POLARITY CRIMP PLUG (FOR RG 8, 213/U CABLE)</p>			
4	FERRULE	COPPER	NICKEL	1								
3	CONTACT PIN	PHOS. BRONZE	GOLD	1					122394RP			
2	INSULATOR	TEFLON	NATURAL	1								
1	BODY	BRASS	NICKEL	1					DWG. NO. 122394RP.DWG			
	DESCRIPTION	MATERIAL	FINISH	QTY	DO NOT SCALE DRAWING	CAD FILE C:/122/122394RP.DWG		REV. B	SIZE A	SCALE NA		