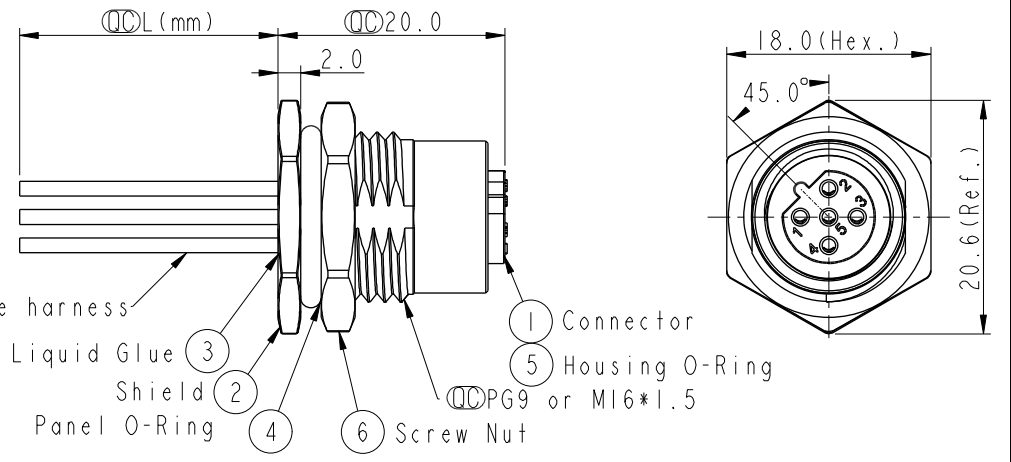
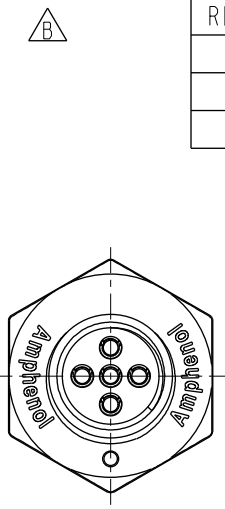
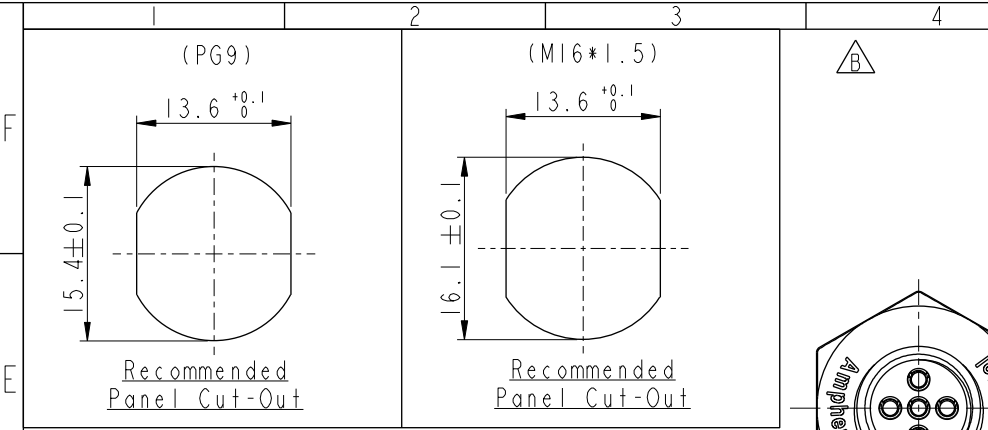


THIS DOCUMENT IS SUBJECT TO CHANGE WITHOUT NOTICE. IT IS CONFIDENTIAL AND A PROPERTY OF Amphenol LTW. DISCLOSURE TO THIRD PARTY HAS TO BE AUTHORIZED BY Amphenol LTW.

REV.	ECN NO.	DATE	SIGN	DESCRIPTION
B	LE31580004-005	2015-07-27	Yulong_wang	Change to Share Drawing.
C	E191630	2019-09-19	Ruru	Update Wire Tolerance



M 12B - 05 P F F C - S F 8 X XX

12B: B-Code
 05: 5Pin
 P: Panel (板端)
 F: Female Connector (母座)
 F: Female Pin (每Pin)
 C: Crimp Type (打端式)
 S: Screw (螺紋式)

15: 150mm
 20: 200mm
 95: 950mm
 Cable Pitch Unit=50mm

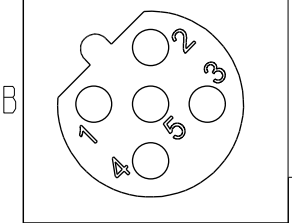
A0: 1000mm
 A5: 1500mm
 Cable Pitch Unit=100mm
 Wire Length (L): 150~1500 mm

B: PG9
 C: M16*1.5

8: IP68 (防水等級68)

F: Front Fasten (前鎖式/Enclosure Rear Mount)

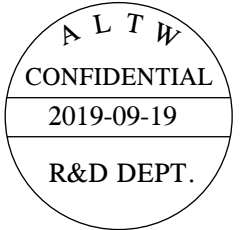
Pin #	Wire	灰	黑	藍	白	棕
5	Gray					
4	Black					
3	Blue					
2	White					
1	Brown					



Contacts	Wire harness	AWG	Item No.
5P	UL1061	22	M12B-05PFFC-SF8BXX
			M12B-05PFFC-SF8CXX

Note:

- * Important Dimension.
- * Waterproof Rate: IP68.
- * Housing: Nylon+GF, Black.
- * Female Pin: Copper Alloy, Gold Plated.
- * Shield: Zinc Alloy, Nickel Plated.
- * Screw Nut: Zinc Alloy, Nickel Plated.
- * Panel O-Ring: Viton, Black.
- * Housing O-Ring: Viton, Green.
- * Wire harness: UL1061
- * Rated Voltage: 60V dc. or ac.
- * Rated Current: 4A
- * Operating Temperature: -25~85°C
- * For Panel Thickness Max 4.5mm.
- * Recommended Nut Torque: 4-6 Kgf.cm.
- * Wire harness Tolerance: 150~300±15mm
 301~1000±20mm
 Over1000 ±50/-0mm



TITLE	SCALE	SIZE	SHEET	OF
M12 B-Code Female Conn. Panel Front With Wire harness	2:1	A4	1	1
UNIT:mm	REV. C	WC-REV. A.5	Inspection item	

Amphenol LTW
 安費諾亮泰企業股份有限公司

ITEM NO	DRAWN BY	DATE
	Ruru	2019-09-19
DWG NO	CHECKED BY	DATE
M12B-05PFFC-SF8XXX	Rita	2019-09-19
CUSTOMER	APPROVED BY	DATE
ALTW	Max	2019-09-19