

Han-Yellock 60 HSM 1xM32

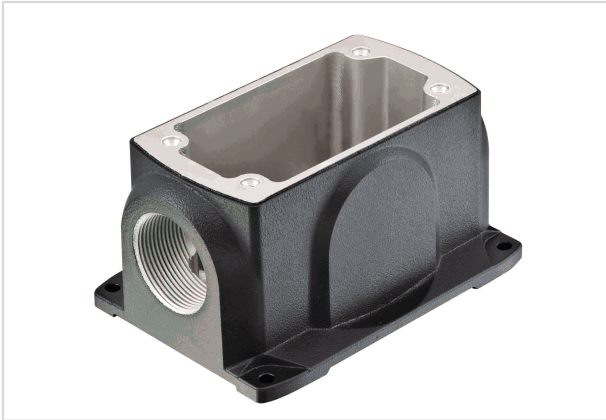


Image is for illustration purposes only. Please refer to product description.

| | |
|--------------------|---|
| Part number | 11 12 600 1202 |
| Specification | Han-Yellock 60 HSM 1xM32 |
| HARTING eCatalogue | https://b2b.harting.com/11126001202 |

Identification

| | |
|--------------------------|-------------------------|
| Category | Hoods/Housings |
| Series of hoods/housings | Han-Yellock® |
| Type of hood/housing | Surface mounted housing |

Version

| | |
|----------------------|--|
| Size | Han-Yellock® 60 |
| Version | Side entry |
| Cable entry | 1x M32 |
| Locking type | Screw locking |
| Field of application | Hoods/housings for industrial applications |

Technical characteristics

| | |
|--|-----------------|
| Limiting temperature | -40 ... +125 °C |
| Un-/locking temperature | -10 ... +85 °C |
| Degree of protection acc. to IEC 60529 | IP65 IP67 |

Material properties

| | |
|---|-----------------------|
| Material (hood/housing) | Zinc die-cast |
| Surface (hood/housing) | Powder-coated |
| Colour (hood/housing) | RAL 7021 (black grey) |
| Material (seal) | NBR |
| Material flammability class acc. to UL 94 | V-0 |



Pushing Performance

Material properties

| | |
|--------------------------------------|-----------|
| RoHS | compliant |
| ELV status | compliant |
| China RoHS | e |
| REACH Annex XVII substances | No |
| REACH ANNEX XIV substances | No |
| REACH SVHC substances | No |
| California Proposition 65 substances | Yes |
| California Proposition 65 substances | Nickel |

Specifications and approvals

| | |
|----------------|-------------------------|
| Specifications | EN 60664-1 IEC 61984 |
| Approvals | DNV GL |
| CE | Yes |

Commercial data

| | |
|--------------------------------|--|
| Packaging size | 1 |
| Net weight | 493 g |
| Country of origin | China |
| European customs tariff number | 85389099 |
| eCl@ss | 27440202 Shell for industrial connectors |