

Han-Yellock 30 HSM 2xM20

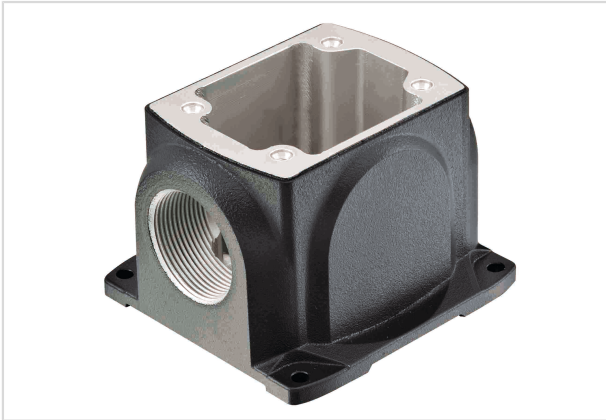


Image is for illustration purposes only. Please refer to product description.

Part number	11 12 300 1204
Specification	Han-Yellock 30 HSM 2xM20
HARTING eCatalogue	https://b2b.harting.com/11123001204

Identification

Category	Hoods/Housings
Series of hoods/housings	Han-Yellock®
Type of hood/housing	Surface mounted housing

Version

Size	Han-Yellock® 30
Version	Side entry
Cable entry	2x M20
Locking type	Screw locking
Field of application	Hoods/housings for industrial applications

Technical characteristics

Limiting temperature	-40 ... +125 °C
Un-/locking temperature	-10 ... +85 °C
Degree of protection acc. to IEC 60529	IP65 IP67

Material properties

Material (hood/housing)	Aluminium die-cast
Surface (hood/housing)	Powder-coated
Colour (hood/housing)	RAL 7021 (black grey)
Material (seal)	NBR
Material flammability class acc. to UL 94	V-0



Pushing Performance

Material properties

RoHS	compliant
ELV status	compliant
China RoHS	e
REACH Annex XVII substances	Not contained
REACH ANNEX XIV substances	Not contained
REACH SVHC substances	Not contained
California Proposition 65 substances	Yes
California Proposition 65 substances	Nickel

Specifications and approvals

Specifications	EN 60664-1 IEC 61984
Approvals	DNV GL
CE	Yes

Commercial data

Packaging size	1
Net weight	410 g
Country of origin	China
European customs tariff number	85389099
eCl@ss	27440202 Shell for industrial connectors