

Han-Yellock PE-Contact-Chamber

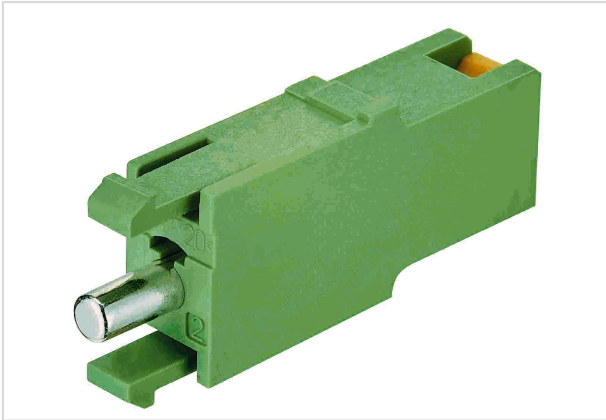


Image is for illustration purposes only. Please refer to product description.

Part number	11 05 001 2601
Specification	Han-Yellock PE-Contact-Chamber
HARTING eCatalogue	https://b2b.harting.com/11050012601

Identification

Category	Contacts
Series	Han-Yellock®
Type of contact	PE contact chamber

Version

Termination method	Han-Quick Lock® termination
Gender	Male
Manufacturing process	Turned contacts

Technical characteristics

Conductor cross-section	0.5 ... 2.5 mm ²
Conductor cross-section	AWG 20 ... AWG 14
Operating current	≤20 A
Contact resistance	≤2 mΩ
Stripping length	10 mm

Material properties

Material (contacts)	Copper alloy
Surface (contacts)	Silver plated
RoHS	compliant with exemption
RoHS exemptions	6(c): Copper alloy containing up to 4 % lead by weight
ELV status	compliant with exemption
China RoHS	50



Pushing Performance

Material properties

REACH Annex XVII substances	No
REACH ANNEX XIV substances	No
REACH SVHC substances	Yes
REACH SVHC substances	Lead
ECHA SCIP number	b51e5b97-eeb5-438b-8538-f1771d43c17d
California Proposition 65 substances	Yes
California Proposition 65 substances	Nickel Lead

Specifications and approvals

Specifications	EN 60664-1 IEC 61984
----------------	-------------------------

Commercial data

Packaging size	1
Net weight	1.92 g
Country of origin	Romania
European customs tariff number	85366990
eCl@ss	27440204 Contact for industrial connectors