

## Han Yellock Han Modular adapter frame 30

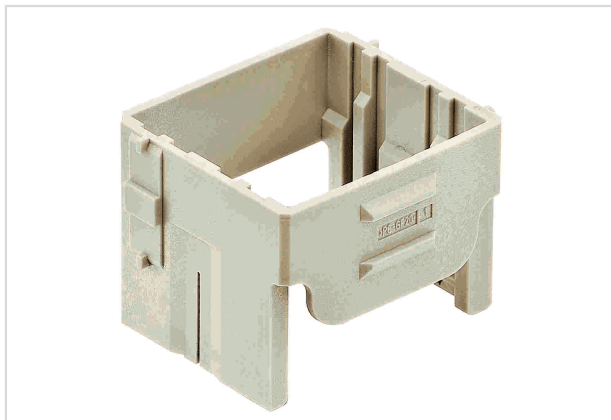


Image is for illustration purposes only. Please refer to product description.

Part number	11 00 300 0101
Specification	Han Yellock Han Modular adapter frame 30
HARTING eCatalogue	<a href="https://b2b.harting.com/11003000101">https://b2b.harting.com/11003000101</a>

### Identification

Category	Accessories
Series	Han-Yellock®
Type of accessory	Adapter frames
Description of the accessory	for carrier hoods for Han-Yellock® 30

### Material properties

Colour (accessories)	RAL 7032 (pebble grey)
Material flammability class acc. to UL 94	V-0
RoHS	compliant
ELV status	compliant
China RoHS	e
REACH Annex XVII substances	Not contained
REACH ANNEX XIV substances	Not contained
REACH SVHC substances	Not contained

### Specifications and approvals

Specifications	EN 60664-1 IEC 61984
Approvals	DNV GL

### Commercial data

Packaging size	1
----------------	---



Pushing Performance

## Commercial data

Net weight	0.87 g
Country of origin	Germany
European customs tariff number	85389099
eCl@ss	27440210 Fixing element for industrial connectors