

## Han PushPull SCRJ POF metal

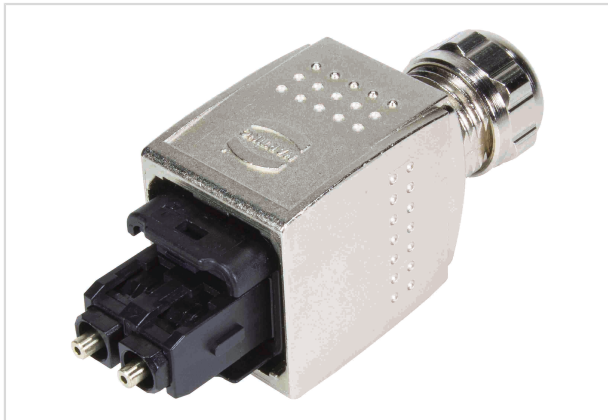


Image is for illustration purposes only. Please refer to product description.

Part number	09 35 241 0401
Specification	Han PushPull SCRJ POF metal
HARTING eCatalogue	<a href="https://b2b.harting.com/09352410401">https://b2b.harting.com/09352410401</a>

### Identification

Category	Connectors
Series	Han® PushPull (V14)
Identification	SCRJ
Element	Connector sets
Specification	AIDA compliant PROFINET-Identification: PROFINET O-Plug SCRJ 1 mm POF
Features	Intuitive locking mechanism

### Version

Shielding	Unshielded
Number of contacts	2
Locking type	PushPull
Details	When installing a PROFINET system, observe the PROFINET installation guideline.
Pack contents	inkl. housing, SCRJ insert und POF contacts

### Technical characteristics

Wire outer diameter	≤2.2 mm
Ferrule diameter	2.5 mm
Limiting temperature	-40 ... +70 °C
Mating cycles	≥750
Degree of protection acc. to IEC 60529	IP65 IP67



Pushing Performance

## Technical characteristics

Cable diameter 6.5 ... 9.5 mm

## Material properties

Material (hood/housing)	Zinc die-cast
Surface (hood/housing)	Nickel plated
Material (O-ring)	NBR
Material (cable seal)	TPE
Material flammability class acc. to UL 94	V-0
RoHS	compliant with exemption
RoHS exemptions	6(c): Copper alloy containing up to 4 % lead by weight
ELV status	compliant with exemption
China RoHS	50
REACH Annex XVII substances	Not contained
REACH ANNEX XIV substances	Not contained
REACH SVHC substances	Yes
REACH SVHC substances	Lead
California Proposition 65 substances	Yes
California Proposition 65 substances	Nickel
California Proposition 65 substances	Lead
California Proposition 65 substances	Antimony trioxide

## Specifications and approvals

Specifications	IEC 61076-3-117 Variant 14 (V14) IEC 61754-24 Mating face
Approvals	DNV GL
UL / CSA	UL 1977 ECBT2.E235076 CSA-C22.2 No. 182.3 ECBT8.E235076
PROFINET	Yes

## Commercial data

Packaging size	1
Net weight	80.9 g
Country of origin	Germany
European customs tariff number	85367000



Pushing Performance

## Commercial data

eCl@ss

27440101 Rectangular connectors (set)