

## Han 24E M insert screw (25-48)

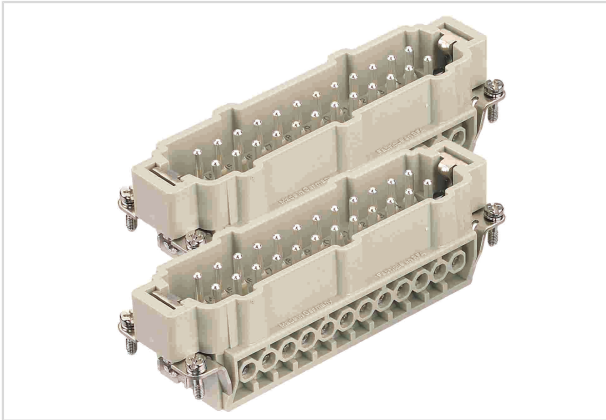


Image is for illustration purposes only. Please refer to product description.

Part number	09 33 024 2611
Specification	Han 24E M insert screw (25-48)
HARTING eCatalogue	<a href="https://b2b.harting.com/09330242611">https://b2b.harting.com/09330242611</a>

### Identification

Category	Inserts
Series	Han E <sup>®</sup>
Specification	Continuing marking

### Version

Termination method	Screw termination
Gender	Male
Size	48 B
With wire protection	Yes
Number of contacts	48
PE contact	Yes
Contact identification	25 ... 48
Details	You need two inserts for a complete assembly!

### Technical characteristics

Conductor cross-section	0.75 ... 2.5 mm <sup>2</sup>
Conductor cross-section	AWG 18 ... AWG 14
Rated current	16 A
Rated voltage	500 V
Rated impulse voltage	6 kV
Pollution degree	3
Rated voltage acc. to UL	600 V
Rated voltage acc. to CSA	600 V



Pushing Performance

## Technical characteristics

Insulation resistance	$>10^{10} \Omega$
Contact resistance	$\leq 1 \text{ m}\Omega$
Stripping length	7.5 mm
Tightening torque	0.5 Nm
Limiting temperature	-40 ... +125 °C
Mating cycles	$\geq 500$

## Material properties

Material (insert)	Polycarbonate (PC)
Colour (insert)	RAL 7032 (pebble grey)
Material (contacts)	Copper alloy
Surface (contacts)	Silver plated
Material flammability class acc. to UL 94	V-0
RoHS	compliant with exemption
RoHS exemptions	6(c): Copper alloy containing up to 4 % lead by weight
ELV status	compliant with exemption
China RoHS	50
REACH Annex XVII substances	Not contained
REACH ANNEX XIV substances	Not contained
REACH SVHC substances	Yes
REACH SVHC substances	Lead
ECHA SCIP number	5dbb3851-b94e-4e88-97a1-571845975242
California Proposition 65 substances	Yes
California Proposition 65 substances	Nickel Lead

## Specifications and approvals

Specifications	EN 60664-1 IEC 61984
Approvals	DNV GL
UL / CSA	UL 1977 ECBT2.E235076 UL 2237 PVVA2.E318390 CSA-C22.2 No. 182.3 PVVA8.E318390



Pushing Performance

## Commercial data

Packaging size	1
Net weight	111.64 g
Country of origin	Germany
European customs tariff number	85366990
eCl@ss	27440205 Contact insert for industrial connectors