

Han 6 ES-Female insert

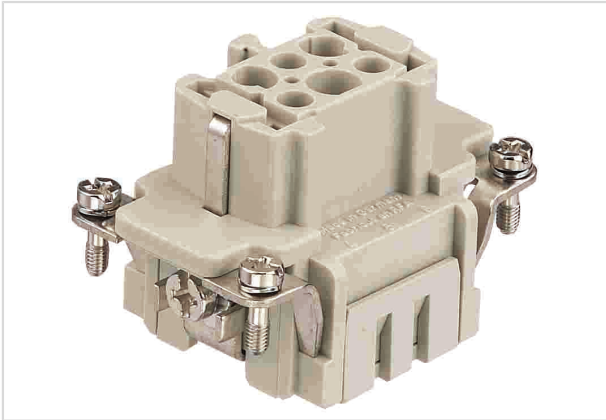


Image is for illustration purposes only. Please refer to product description.

| | |
|--------------------|---|
| Part number | 09 33 006 2716 |
| Specification | Han 6 ES-Female insert |
| HARTING eCatalogue | https://b2b.harting.com/09330062716 |

Identification

| | |
|----------|---------------------|
| Category | Inserts |
| Series | Han [®] ES |

Version

| | |
|--------------------|------------------------|
| Termination method | Cage-clamp termination |
| Gender | Female |
| Size | 6 B |
| Number of contacts | 6 |
| PE contact | Yes |

Technical characteristics

| | |
|---------------------------|------------------------------|
| Conductor cross-section | 0.14 ... 2.5 mm ² |
| Conductor cross-section | AWG 26 ... AWG 14 |
| Rated current | 16 A |
| Rated voltage | 500 V |
| Rated impulse voltage | 6 kV |
| Pollution degree | 3 |
| Rated voltage acc. to UL | 600 V |
| Rated voltage acc. to CSA | 600 V |
| Insulation resistance | >10 ¹⁰ Ω |
| Contact resistance | ≤3 mΩ |
| Stripping length | 7 ... |
| Limiting temperature | -40 ... +125 °C |



Pushing Performance

Technical characteristics

| | |
|---------------|------|
| Mating cycles | ≥500 |
|---------------|------|

Material properties

| | |
|---|---|
| Material (insert) | Polycarbonate (PC) |
| Colour (insert) | RAL 7032 (pebble grey) |
| Material (contacts) | Copper alloy |
| Surface (contacts) | Silver plated |
| Material flammability class acc. to UL 94 | V-0 |
| RoHS | compliant with exemption |
| RoHS exemptions | 6(c): Copper alloy containing up to 4 % lead by weight |
| ELV status | compliant with exemption |
| China RoHS | 50 |
| REACH Annex XVII substances | No |
| REACH ANNEX XIV substances | No |
| REACH SVHC substances | Yes |
| REACH SVHC substances | Lead Potassium 1,1,2,2,3,3,4,4,4-nonafluorobutane-1-sulphonate |
| ECHA SCIP number | 1e38d35d-d1be-4585-8e03-95faccd739bf |
| California Proposition 65 substances | Yes |
| California Proposition 65 substances | Nickel Lead |

Specifications and approvals

| | |
|----------------|---|
| Specifications | EN 60664-1 IEC 61984 |
| Approvals | DNV GL |
| UL / CSA | UL 1977 ECBT2.E235076 UL 2237 PVVA2.E318390 CSA-C22.2 No. 182.3 PVVA8.E318390 |

Commercial data

| | |
|--------------------------------|----------|
| Packaging size | 1 |
| Net weight | 49.18 g |
| Country of origin | Germany |
| European customs tariff number | 85366990 |



Pushing Performance

Commercial data

eCl@ss

27440205 Contact insert for industrial connectors