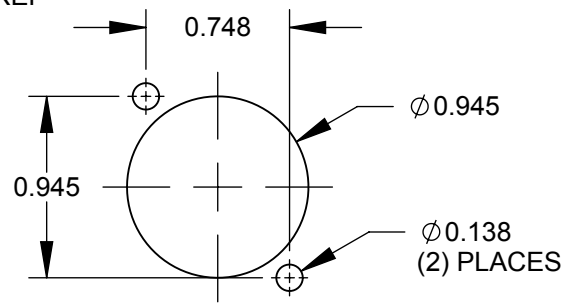


- NOTES:**
1. INSERTION LOSS: 0.75 dB MAX.
 2. OPERATION TEMP: -20°C TO +70°C.
 3. PRODUCT COMES WITH DUST CAPS. (NOT SHOWN)
 4. MATERIALS:
 SLEEVE: SINGLE-MODE - CERAMIC (ZIRCONIA)
 MULTI-MODE - PHOSPHORUS BRONZE
 HOUSING - DELRIN, BLACK
 ADAPTER - THERMOPLASTIC
 SCREWS - STEEL, NICKEL PLATED
 ADAPTER MOUNTING CLIPS - STAINLESS STEEL
 5. FOR MOUNTING SCREWS TO BE SHIPPED WITH ASSEMBLY AND INDIVIDUALING PACKAGING, ADD SUFFIX -PKG TO PART NUMBER.
 6. WHEN MOUNTING ASSEMBLY, USE A SCREW TORQUE OF 10 INCH-POUNDS MAXIMUM.
 7. THIS PRODUCT IS RoHS COMPLIANT.



PART NUMBER	LC2 ADAPTER	ADAPTER COLOR
EHLC2	SINGLE-MODE	BLUE
EHLC2M	MULTI-MODE	BEIGE

CUSTOMER DRAWING

					THIS DRAWING DESCRIBES A DESIGN CONSIDERED PROPRIETARY IN NATURE, DEVELOPED AND MANUFACTURED BY SWITCHCRAFT INC. AND IS RELEASED ON A CONFIDENTIAL BASIS FOR IDENTIFICATION PURPOSES ONLY.					
					SIZE	WIDTH	MULT	LBS/M	TEMPER	
					FINISH			MATERIAL		
					SPEC No.			SPEC No.		
					FIRST USED ON		SCALE 1:1			
B	27239	1-3-14	TO	TJK	DATE DRAWN	BY	CHKD	APVD	Switchcraft®	
A	26348	2/27/09	RS	TJK	5/12/08	JGK	RS	TJK		
					SHEET 1 OF 1					
REV	ECO NUMBER	DATE	BY	APVD	NAME E SERIES LC TO LC FIBER OPTIC ADAPTER, RoHS			PART No.	REV	
REVISIONS					DO NOT SCALE DRAWING			EHLC2 SERIES		B