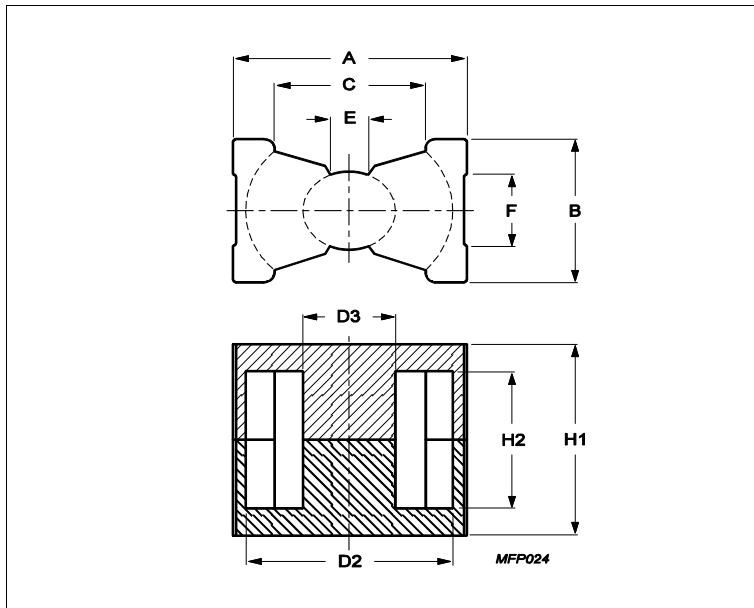


## Core **PQ35/30**



Effective parameters			
	Parameter	Value	Unit
$\Sigma(I/A)$	core factor (C1)	0.401	mm <sup>-1</sup>
<b>Ve</b>	effective volume	14800	mm <sup>3</sup>
<b>Le</b>	effective length	77	mm
<b>Ae</b>	effective area	192	mm <sup>2</sup>
<b>Amin</b>	minimum area	163	mm <sup>2</sup>
<b>m</b>	PQ35/30	≈ 67.3	g/set

Dimensions for product: PQ35/30

	Nom	Tol +	Tol -	Max	Min	Unit
<b>A</b>	36.10	0.60	0.60	36.70	35.50	mm
<b>B</b>	26.00	0.50	0.50	26.50	25.50	mm
<b>C</b>					23.50	mm
<b>D2</b>	32.00	0.50	0.50	32.50	31.50	mm
<b>D3</b>	14.40	0.25	0.25	14.65	14.15	mm
<b>E</b>					6.00	mm
<b>F</b>					11.80	mm
<b>H1</b>	30.00	0.25	0.25	30.25	29.75	mm
<b>H2</b>	20.24	0.30	0.30	20.54	19.94	mm

Inductance factor

Material	Value	Tol +	Tol -	Unit
3C94	5800	25%	25%	nH/turns <sup>2</sup>
3C95	6600	25%	25%	nH/turns <sup>2</sup>
3C96	5200	25%	25%	nH/turns <sup>2</sup>
3C97	7200	25%	25%	nH/turns <sup>2</sup>
3F36	3600	25%	25%	nH/turns <sup>2</sup>
3F46	2200	25%	25%	nH/turns <sup>2</sup>

Power loss: 3C94

Measuring conditions			Max	Unit
100 kHz	200 mT	100 °C	7.400	W/set

Power loss: 3C95

Measuring conditions			Max	Unit

## Core **PQ35/30**

Power loss: 3C95				
Measuring conditions			Max	Unit
100 kHz	200 mT	100 °C	7.100	W/set
100 kHz	200 mT	25 °C	7.700	W/set
Power loss: 3C96				
Measuring conditions			Max	Unit
100 kHz	200 mT	100 °C	6.700	W/set
400 kHz	50 mT	100 °C	3.000	W/set
Power loss: 3C97				
Measuring conditions			Max	Unit
100 kHz	200 mT	60 °C	7.400	W/set
100 kHz	200 mT	120 °C	7.100	W/set
100 kHz	200 mT	140 °C	8.900	W/set
Power loss: 3F36				
Measuring conditions			Max	Unit
500 kHz	50 mT	100 °C	2.200	W/set
500 kHz	100 mT	100 °C	17.000	W/set
Power loss: 3F46				
Measuring conditions			Max	Unit
1000 kHz	50 mT	100 °C	11.000	W/set
3000 kHz	10 mT	100 °C	7.800	W/set

Bsat					
Measuring conditions			Material	Min	Unit
25 kHz	250 A/m	100 °C	3C94	320	mT
25 kHz	250 A/m	100 °C	3C95	330	mT
25 kHz	250 A/m	100 °C	3C96	340	mT
25 kHz	250 A/m	100 °C	3C97	330	mT
25 kHz	250 A/m	100 °C	3F36	340	mT
25 kHz	250 A/m	100 °C	3F46	330	mT