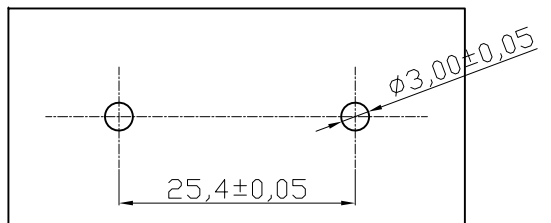
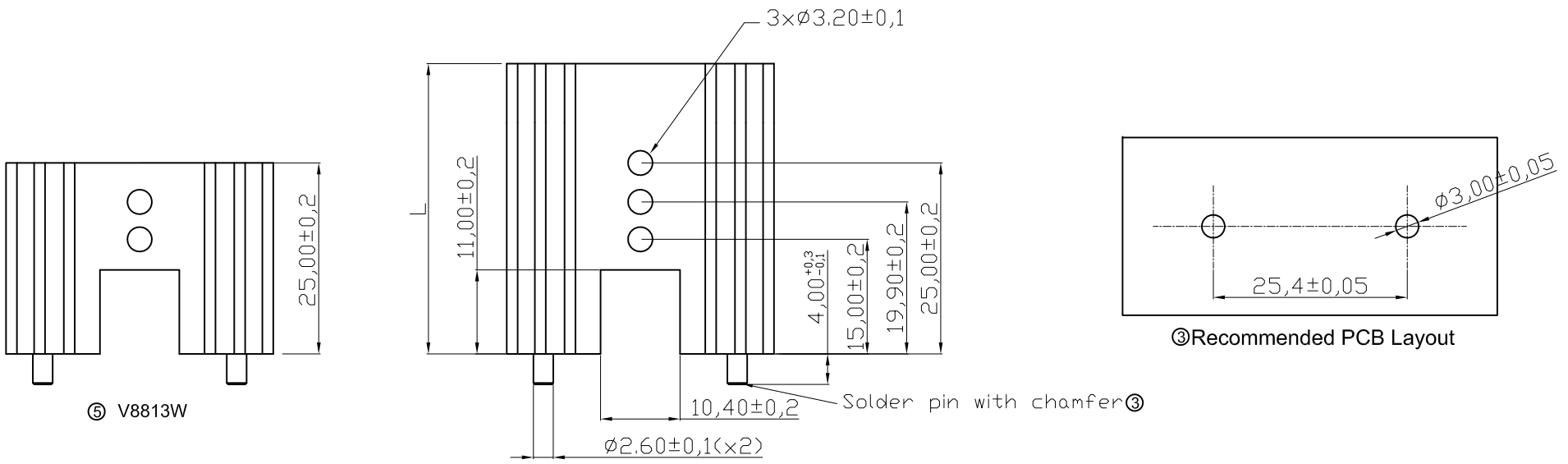


1 2 3 4 5 6 7

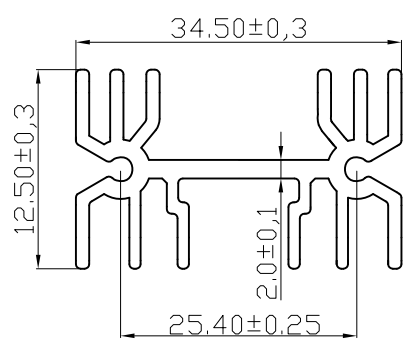
A
B
C
D
E
F
G
H

A
B
C
D
E
F
G
H



③ Recommended PCB Layout

⑤ V8813W



Notes
Material : AL 6063
Finished : Black Anodized
Pin : Tin Plated

Option	L	④ Thermal resistance(K/W)
V8813W	25	11.4
V8813X	38	10.2
V8813Y	50	8.8

RoHS compliant
Unit: mm

Scale	Free					Date	Name
TOLERANCE	⑤	Add a drawing for V8813W	26.03.2019	Segal	Drawn	11.08.2009	Dean
	④	Update thermal resistance	22.05.2018	Amy	Approved	26.03.2019	Amy
UNIT	±0.20	③ Add PCB layout information	24.02.2014	Amy			
DIM	TOL	② Modify drawing layout	08.03.2010	Dean	ASSMANN WSW components	Drawing-No. ASS 0870 HS rev05	
X.°	±X°	① Drawn	11.08.2009	Dean			
X.X°	±X°						
Angle	TOL	Id.	Modification	Date	Name	Replace	Sheet

Customer-No.	
ASSMANN WSW-No.	V8813x
Drawing-No.	ASS 0870 HS rev05
Replace	Sheet

1 2 3 4 5 6 7