

CX4024NL

- RF SPLITTER, 2-WAY
- 5–1000MHz
- IMPEDANCE = 75 OHMS
- SURFACE MOUNT

NOTES: UNLESS OTHERWISE SPECIFIED

- OPERATING TEMPERATURE: -40°C TO $+85^{\circ}\text{C}$
- STORAGE TEMPERATURE: -50°C TO $+125^{\circ}\text{C}$
- COMPLIANCE TO J-STD:
 - J-STD-002: SOLDERABILITY AT REFLOW PEAK TEMPERATURE OF 245°C
 - J-STD-020: MSL 1, NO MOISTURE SENSITIVE
 - J-STD-075: R6, 250°C MAXIMUM THROUGH REFLOW SOLDER
- DIMENSIONS ARE IN INCHES.
 - TOLERANCE:
 - .XX ± 0.01
 - .XXX ± 0.005
- OPTIONAL TAPE & REEL PACKAGING CAN BE ORDERED BY ADDING A "T" SUFFIX TO THE PART NUMBER. ie: CX4024NLT

ELECTRICAL SPECIFICATIONS: $\odot 25^{\circ}\text{C}$

INSERTION:

FREQUENCY	
5–500 MHz	–20 dB MIN
501–870 MHz	–18 dB MIN
871–1000 MHz	–15 dB MIN

RETURN LOSS:

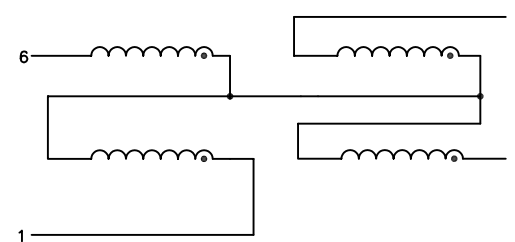
FREQUENCY	
5–500 MHz	–25 dB MIN
501–870 MHz	–20 dB MIN
871–1000 MHz	–15 dB MIN

INSERTION LOSS:

FREQUENCY	
5–500 MHz	–3.8 dB MAX
501–870 MHz	–4.0 dB MAX
871–1000 MHz	–4.3 dB MAX

AMPLITUDE UNBALANCE:

FREQUENCY	
5–500 MHz	–0.1 dB MAX
501–870 MHz	–0.2 dB MAX
871–1000 MHz	–0.3 dB MAX



SCHEMATIC

© Copyright, 2014. Pulse Electronics Corp. All rights reserved. Pulse confidential & proprietary. (04/14/2014)

PRODUCT DESCRIPTION:

SPLTR, RF, 2-WAY, 0-DEG; 5–1000MHz

SHEET:

1 OF 2

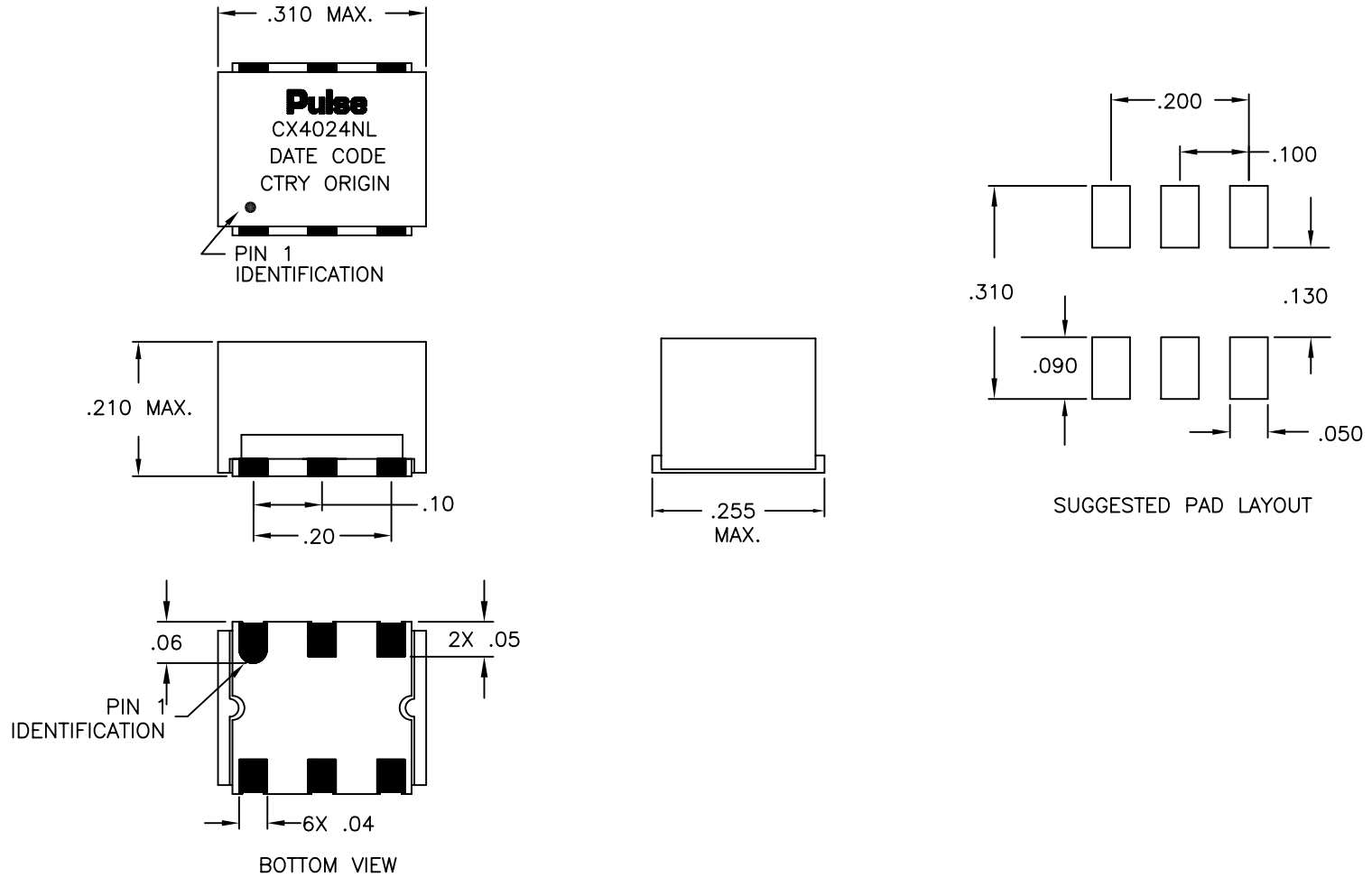
PART NO.

CX4024NL

DATASHEET REV.

M16

MECHANICAL SPECIFICATIONS:



© Copyright, 2014. Pulse Electronics Corp. All rights reserved. Pulse confidential & proprietary. (04/14/2014)

PRODUCT DESCRIPTION:

SPLTR, RF, 2-WAY, 0-DEG; 5-1000MHz

SHEET:

2 OF 2

PART NO.

CX4024NL

DATASHEET REV.

M16