

Description: 5GHz PCB antenna

Series: Internal Antenna

PART NUMBER: W3919XXXX



Features:

- 4900-5925 MHz
- Size 15.9 X 7.6 X 0.45 mm
- Efficiency > 60%
- VSWR < 2
- Nominal impedance 50 Ω
- Cable and connector can be customized

Applications:

- WiFi 5GHz
- DSRC
- ISM band 5GHz radios
- IoT, M2M

All dimensions are in mm / inches

Issue: 1714

In the effort to improve our products, we reserve the right to make changes judged to be necessary.

CONFIDENTIAL AND PROPRIETARY INFORMATION

This document contains confidential and proprietary information of Pulse Electronics, Inc. (Pulse) and is protected by copyright, trade secret and other state and federal laws. Its receipt or possession does not convey any rights to reproduce, disclose its contents, or to manufacture, use or sell anything it may describe. Reproduction, disclosure or use without specific written authorization of Pulse is strictly forbidden.

For more information:

Pulse Worldwide Headquarters
15255 Innovation Drive #100
San Diego, CA 92128
USA
Tel: 1-858-674-8100

Pulse/Larsen Antennas
18110 SE 34th St Bldg 2 Suite 250
Vancouver, WA 98683
USA
Tel: 1-360-944-7551

Europe Headquarters
Pulse GmbH & Do, KG
Zeppelinstrasse 15
Herrenberg, Germany
Tel: 49 7032 7806 0

Pulse (Suzhou) Wireless Products Co, Inc.
99 Huo Ju Road(#29 Bldg,4th Phase
Suzhou New District
Jiangsu Province, Suzhou 215009 PR China
Tel: 86 512 6807 9998



Description: 5GHz PCB antenna

Series: Internal Antenna

PART NUMBER: W3919XXXX

This document covers all product variants of the following product family:

W3919B0050	50mm 1.13mm OD cable	U.FL compatible connector
W3919B0100	100mm 1.13mm OD cable	U.FL compatible connector

Issue: 1714

In the effort to improve our products, we reserve the right to make changes judged to be necessary.

CONFIDENTIAL AND PROPRIETARY INFORMATION

This document contains confidential and proprietary information of Pulse Electronics, Inc. (Pulse) and is protected by copyright, trade secret and other state and federal laws. Its receipt or possession does not convey any rights to reproduce, disclose its contents, or to manufacture, use or sell anything it may describe. Reproduction, disclosure or use without specific written authorization of Pulse is strictly forbidden.

For more information:

Pulse Worldwide Headquarters
15255 Innovation Drive #100
San Diego, CA 92128
USA
Tel: 1-858-674-8100

Pulse/Larsen Antennas
18110 SE 34th St Bldg 2 Suite 250
Vancouver, WA 98683
USA
Tel: 1-360-944-7551

Europe Headquarters
Pulse GmbH & Do, KG
Zeppelinstrasse 15
Herrenberg, Germany
Tel: 49 7032 7806 0

Pulse (Suzhou) Wireless Products Co, Inc.
99 Huo Ju Road(#29 Bldg,4th Phase
Suzhou New District
Jiangsu Province, Suzhou 215009 PR China
Tel: 86 512 6807 9998



Description: 5GHz PCB antenna**Series: Internal Antenna****PART NUMBER: W3919XXXX****ELECTRICAL SPECIFICATIONS**

Frequency	4900-5925 MHz
Nominal Impedance	50 Ω
VSWR	< 2
Gain	3 dBi +/- 1 dB
Efficiency	60 %
Radiation Pattern	Omni
Polarization	Linear
Power withstanding	2 W
Connector	U.FL compatible connector
Cable type	1.13mm coaxial cable black
Cable length	Optional

(*) All RF parameters measured on 2mm thick PC plate

Description: 5GHz PCB antenna**Series: Internal Antenna****PART NUMBER: W3919XXXX****MECHANICAL SPECIFICATIONS**

Radiator material	FR4 PCB
Color	Black
Adhesive	3M467
Thickness(with adhesive, no liner)	0.45 mm
PCB size(L X W X T)	15.9 X 7.6 X 0.45 mm

ENVIRONMENTAL SPECIFICATIONS

Operating temperature	-40/+85 ° C
-----------------------	-------------

Issue: 1714

In the effort to improve our products, we reserve the right to make changes judged to be necessary.

CONFIDENTIAL AND PROPRIETARY INFORMATION

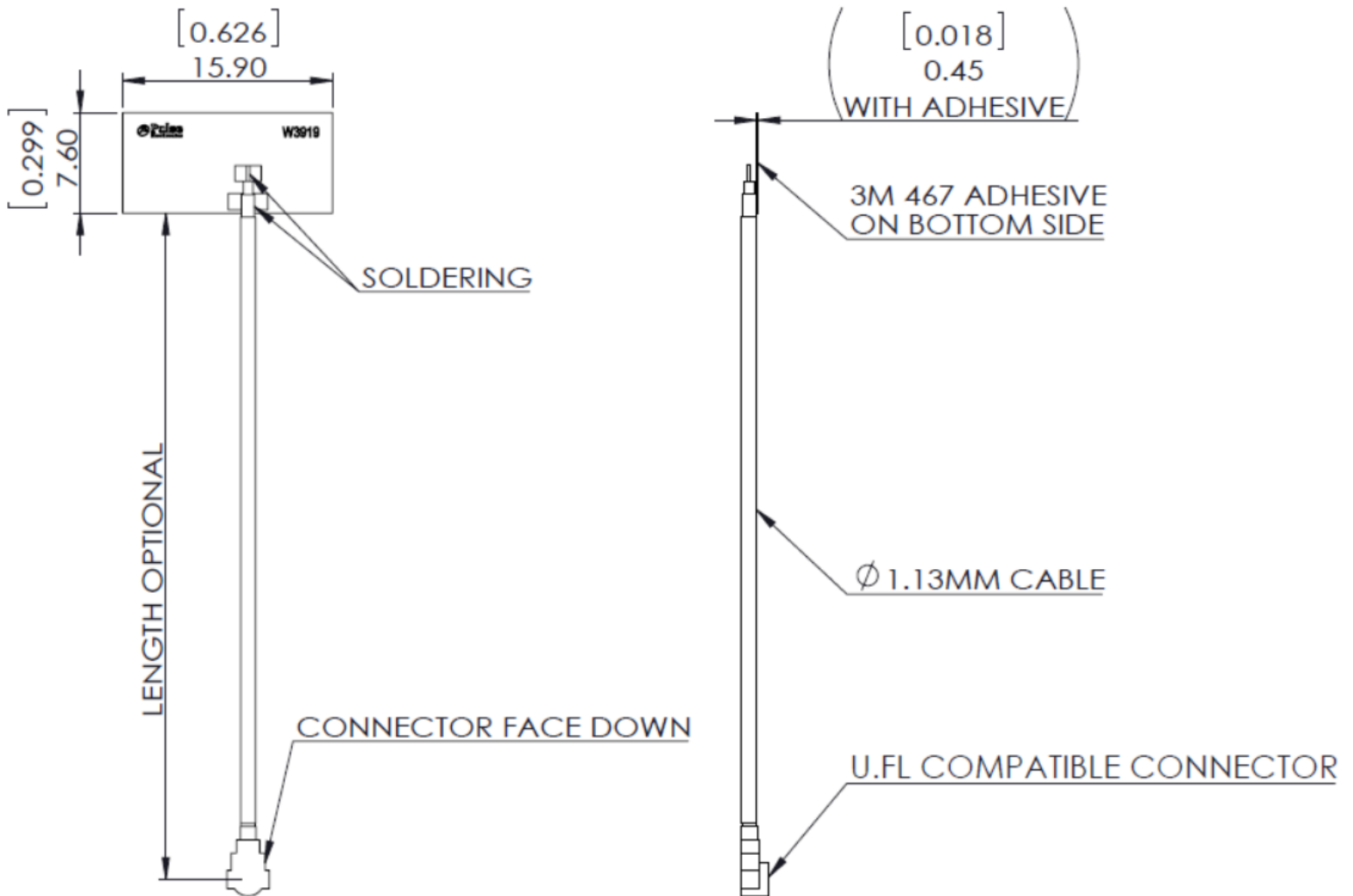
This document contains confidential and proprietary information of Pulse Electronics, Inc. (Pulse) and is protected by copyright, trade secret and other state and federal laws. Its receipt or possession does not convey any rights to reproduce, disclose its contents, or to manufacture, use or sell anything it may describe. Reproduction, disclosure or use without specific written authorization of Pulse is strictly forbidden.

Description: 5GHz PCB antenna

Series: Internal Antenna

PART NUMBER: W3919XXXX

MECHANICAL DRAWING



Issue: 1714

In the effort to improve our products, we reserve the right to make changes judged to be necessary.

CONFIDENTIAL AND PROPRIETARY INFORMATION

This document contains confidential and proprietary information of Pulse Electronics, Inc. (Pulse) and is protected by copyright, trade secret and other state and federal laws. Its receipt or possession does not convey any rights to reproduce, disclose its contents, or to manufacture, use or sell anything it may describe. Reproduction, disclosure or use without specific written authorization of Pulse is strictly forbidden.

Description: 5GHz PCB antenna

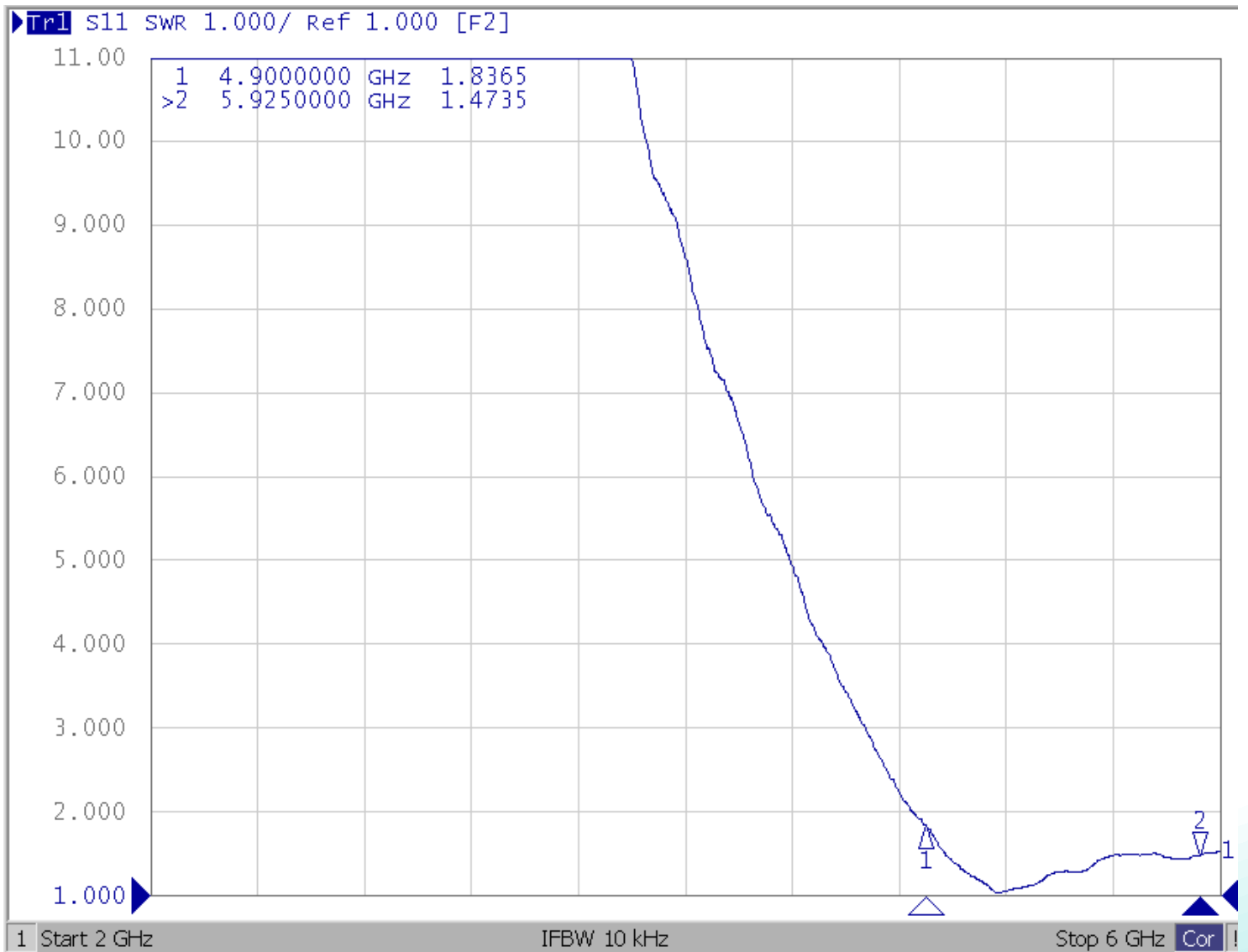
Series: Internal Antenna

PART NUMBER: W3919XXXX

CHARTS

(*) All RF parameters measured on 2mm thick PC plate

Return Loss



Issue: 1714

In the effort to improve our products, we reserve the right to make changes judged to be necessary.

CONFIDENTIAL AND PROPRIETARY INFORMATION

This document contains confidential and proprietary information of Pulse Electronics, Inc. (Pulse) and is protected by copyright, trade secret and other state and federal laws. Its receipt or possession does not convey any rights to reproduce, disclose its contents, or to manufacture, use or sell anything it may describe. Reproduction, disclosure or use without specific written authorization of Pulse is strictly forbidden.



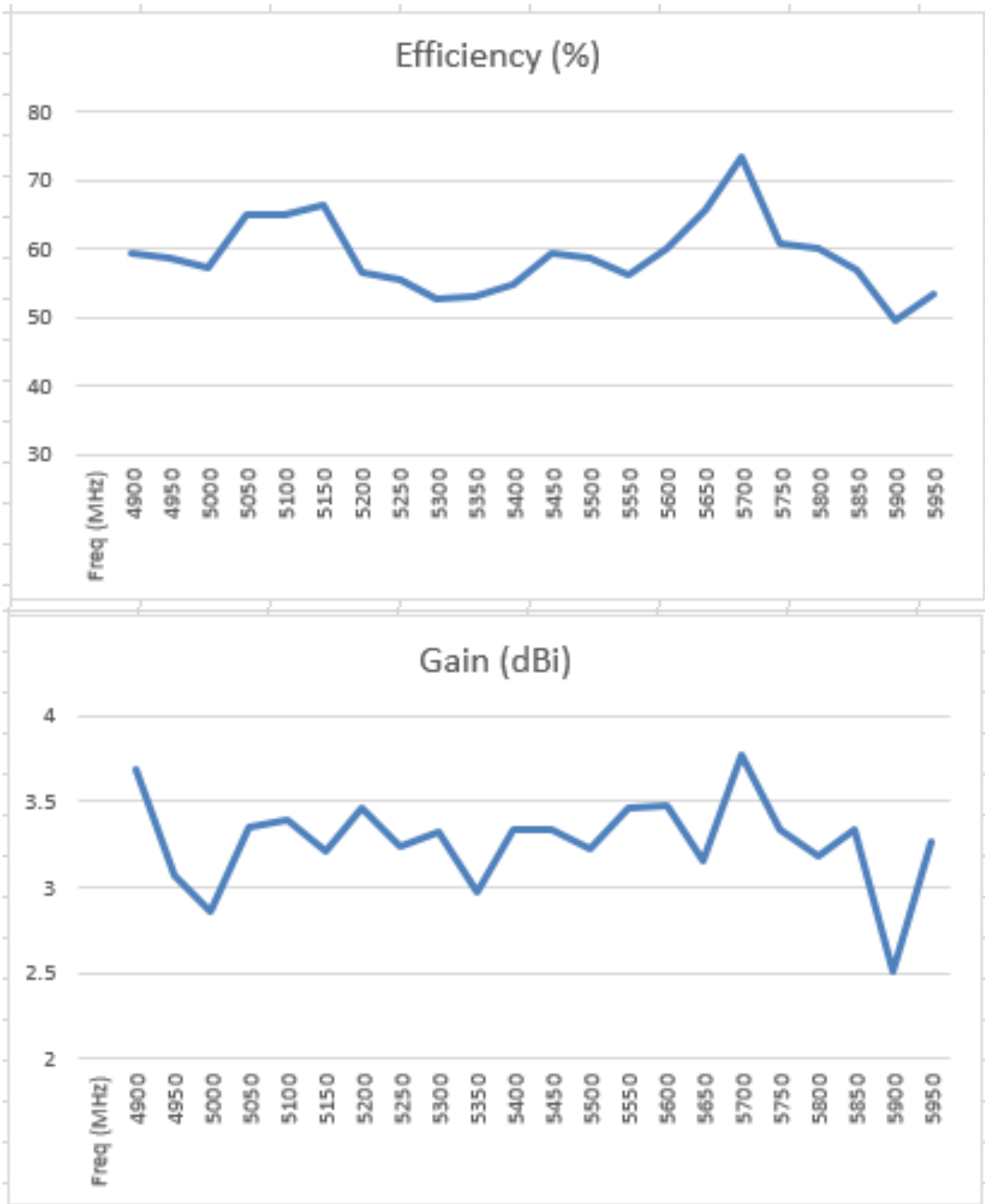
Description: 5GHz PCB antenna

Series: Internal Antenna

PART NUMBER: W3919XXXX

CHARTS

(* All RF parameters measured on 2mm thick PC plate



Issue: 1714

In the effort to improve our products, we reserve the right to make changes judged to be necessary.

CONFIDENTIAL AND PROPRIETARY INFORMATION

This document contains confidential and proprietary information of Pulse Electronics, Inc. (Pulse) and is protected by copyright, trade secret and other state and federal laws. Its receipt or possession does not convey any rights to reproduce, disclose its contents, or to manufacture, use or sell anything it may describe. Reproduction, disclosure or use without specific written authorization of Pulse is strictly forbidden.

Description: 5GHz PCB antenna

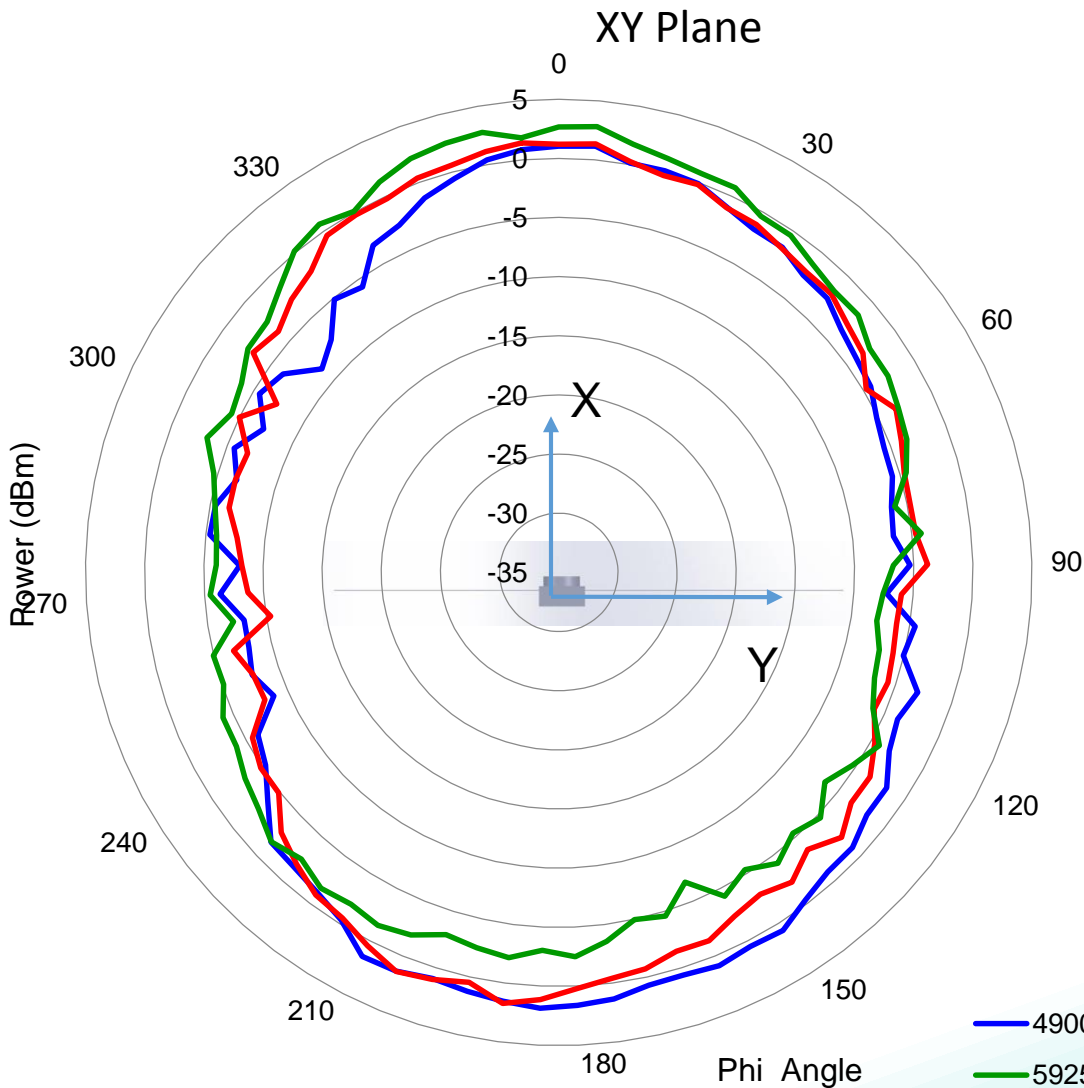
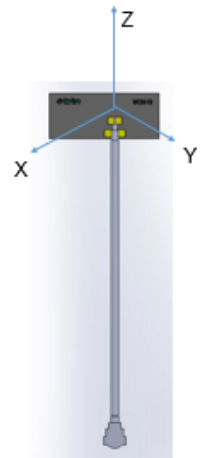
Series: Internal Antenna

PART NUMBER: W3919XXXX

CHARTS

Typical free space radiation pattern
WIFI 5GHz

(* All RF parameters measured on 2mm thick PC plate



1500MHz	Avg (dBi) = -2.93
	Peak (dBi) = 1.86
	Avg -3 (deg) = 130
5500MHz	Avg (dBi) = -2.93
	Peak (dBi) = 1.75
	Avg -3 (deg) = 115
5925MHz	Avg (dBi) = -2.92
	Peak (dBi) = 2.81
	Avg -3 (deg) = 65

— 4900MHz — 5500MHz
— 5925MHz

Issue: 1714

In the effort to improve our products, we reserve the right to make changes judged to be necessary.

CONFIDENTIAL AND PROPRIETARY INFORMATION

This document contains confidential and proprietary information of Pulse Electronics, Inc. (Pulse) and is protected by copyright, trade secret and other state and federal laws. Its receipt or possession does not convey any rights to reproduce, disclose its contents, or to manufacture, use or sell anything it may describe. Reproduction, disclosure or use without specific written authorization of Pulse is strictly forbidden.



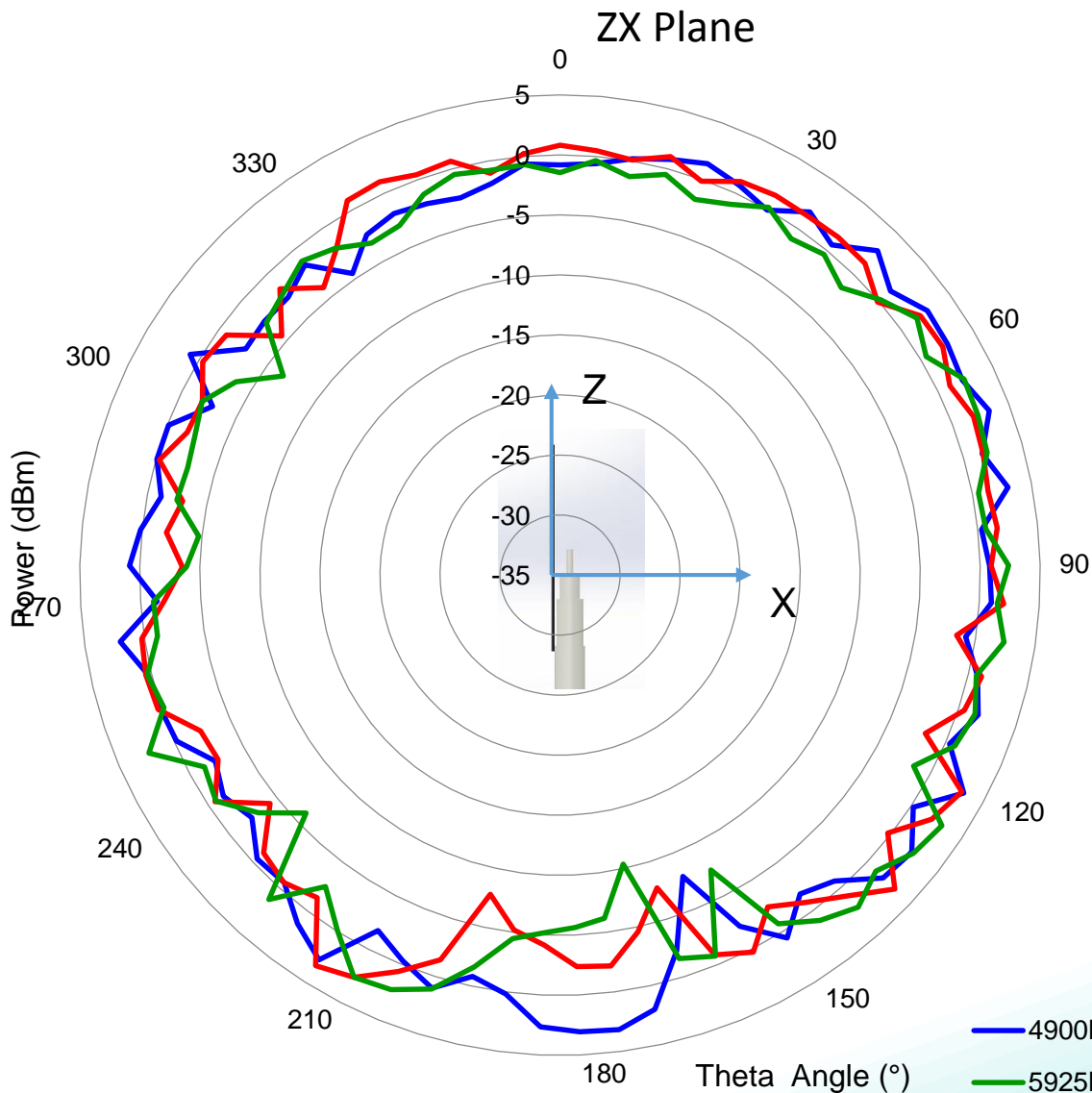
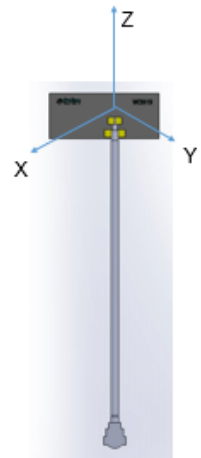
Description: 5GHz PCB antenna

Series: Internal Antenna

PART NUMBER: W3919XXXX

CHARTS

Typical free space radiation pattern
 WIFI 5GHz
 (*) All RF parameters measured on 2mm thick
 PC plate



Issue: 1714

In the effort to improve our products, we reserve the right to make changes judged to be necessary.
 CONFIDENTIAL AND PROPRIETARY INFORMATION

This document contains confidential and proprietary information of Pulse Electronics, Inc. (Pulse) and is protected by copyright, trade secret and other state and federal laws. Its receipt or possession does not convey any rights to reproduce, disclose its contents, or to manufacture, use or sell anything it may describe. Reproduction, disclosure or use without specific written authorization of Pulse is strictly forbidden.



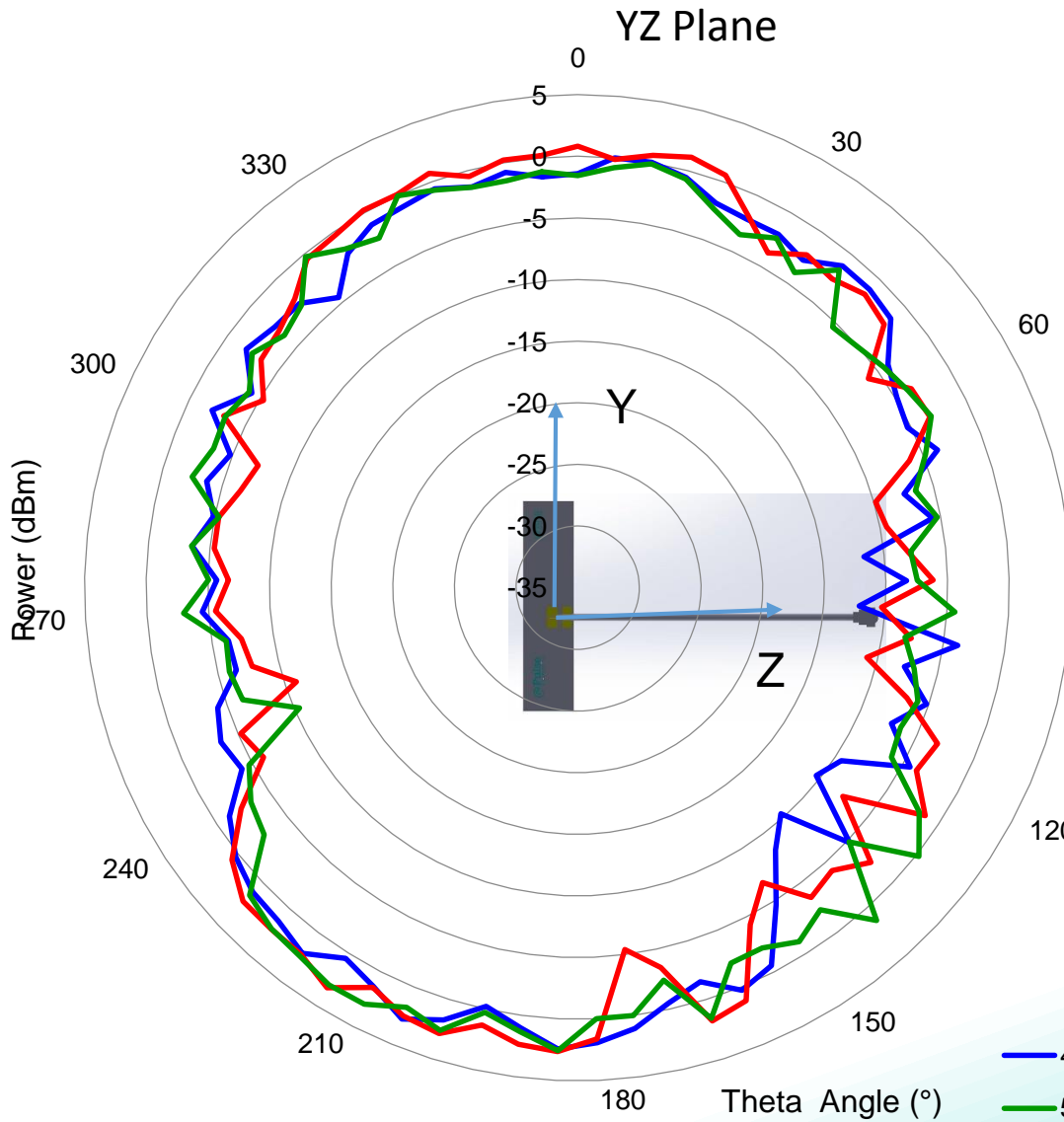
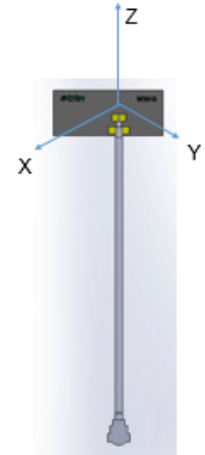
Description: 5GHz PCB antenna

Series: Internal Antenna

PART NUMBER: W3919XXXX

CHARTS

Typical free space radiation pattern
WIFI 5GHz
(*) All RF parameters measured on 2mm thick PC plate



4900MHz	Avg (dBi) = -2.99
	Peak (dBi) = 2.79
	Avg -3 (deg) = 35
5500MHz	Avg (dBi) = -2.88
	Peak (dBi) = 3.3
	Avg -3 (deg) = 45
5925MHz	Avg (dBi) = -2.62
	Peak (dBi) = 3.03
	Avg -3 (deg) = 32.5

Issue: 1714

In the effort to improve our products, we reserve the right to make changes judged to be necessary.
CONFIDENTIAL AND PROPRIETARY INFORMATION

This document contains confidential and proprietary information of Pulse Electronics, Inc. (Pulse) and is protected by copyright, trade secret and other state and federal laws. Its receipt or possession does not convey any rights to reproduce, disclose its contents, or to manufacture, use or sell anything it may describe. Reproduction, disclosure or use without specific written authorization of Pulse is strictly forbidden.



Description: 5GHz PCB antenna

Series: Internal Antenna

PART NUMBER: W3919XXXX

PACKAGING

10PCS/PE bag
10 PE bag/foam bag
50 foam bag/ carton box

Total 5000PCS/Carton box



Issue: 1714

In the effort to improve our products, we reserve the right to make changes judged to be necessary.

CONFIDENTIAL AND PROPRIETARY INFORMATION

This document contains confidential and proprietary information of Pulse Electronics, Inc. (Pulse) and is protected by copyright, trade secret and other state and federal laws. Its receipt or possession does not convey any rights to reproduce, disclose its contents, or to manufacture, use or sell anything it may describe. Reproduction, disclosure or use without specific written authorization of Pulse is strictly forbidden.