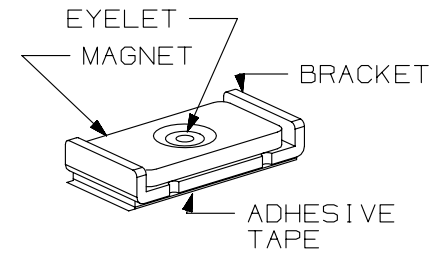
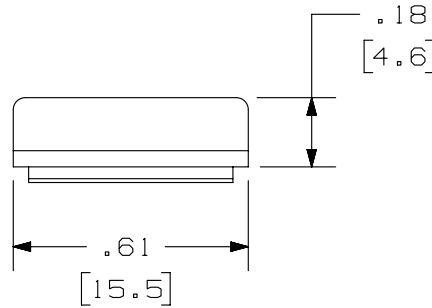
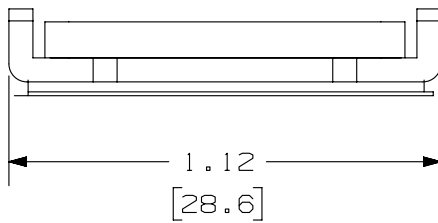
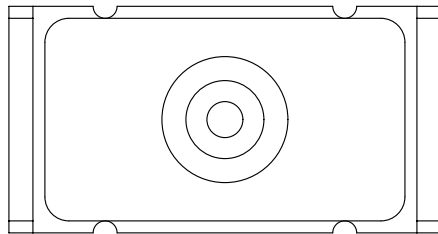


THIS COPY IS PROVIDED ON A RESTRICTED BASIS AND IS NOT TO BE USED IN ANY WAY DETRIMENTAL TO THE INTERESTS OF PANDUIT CORP.

PANDUIT P/N	WEIGHT
CBM-X	.208 LB/10 PCS (94.3 g/10 PCS)

NOTES:

- SEE CURRENT CATALOG FOR ADDITIONAL PART NUMBER SUFFIXES TO INDICATE PACKAGE QUANTITY.
- CAN BE USED WITH VARIOUS TYPES OF PANDUIT SURFACE MOUNT BOXES APPLIED TO METAL SURFACES.
- ADHESIVE PRESSURE SENSITIVE FOAM .040 (1.0) THICK WITH PROTECTIVE LINER IS PROVIDED FOR EASE OF MOUNTING ON APPLICABLE PANDUIT SURFACE BOXES.
- DIMENSIONS IN [] ARE IN METRIC.



PART NUMBER		CBM-X	
TITLE			
MAGNET WITH ADHESIVE BACKING			
CUSTOMER DRAWING			
ITEM REVISION NAME		D35543BF/00	
DATASET FILE NAME		D35543BF_DC/00C	
UNLESS OTHERWISE SPECIFIED, DIMENSIONAL TOLERANCES ARE: IN [mm]		MATERIAL:	
.x ± .1 [2.54]		.xxx ± .005 [.127]	
.xx ± .01 [.25]		ANGLES ± 5 °	
THIRD ANGLE PROJECTION		DRAWING NUMBER:	
DRAWN BY		35543-06	
DATE		SHT 1 OF 1	
CHK		SIZE	
5-03-96		A	
CEP			
SCALE			
NONE			

REV	DATE	BY	CHK	APR	DESCRIPTION	ECN
2	3/10/14	JSP	REFR	MMR	B. REVISED DRAWING TITLE BLOCK.	35543-06
1	11-12-98	JSP	CEF	CEF	A. REVISED NOTE 2 AND 3.	35543-06
R	5-03-96	DW	CEF	CEF	RELEASED TO PRODUCTION	35543-06

D10100DA/14

2

1

2

1