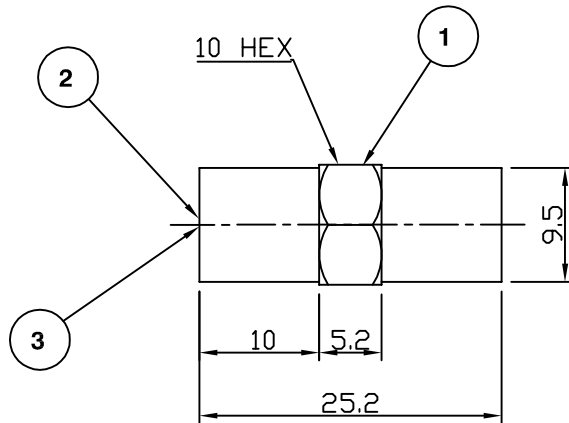


RoHS COMPLIANT



Electrical Characteristics

Nominal Impedance: 50 ohms
 Frequency Range: DC to 2 GHz
 VSWR: 1.3:1 Max

Mechanical Characteristics

Mating Cycles: 500 cycles minimum

	PART	DESCRIPTION
1	Body	Brass, nickel plated
2	Dielectric	Delrin
3	Contact	Brass, gold plated

First Issue	JT	1	05 Aug 10
DESCRIPTION OF REVISION	APPVD	ISS	DATE



Cinch Connectivity Solutions
 7-13 Russell Way,
 Widford Industrial Estate,
 Chelmsford, Essex,
 CM1 3AA, UK.
 Tel: +44 (0) 1245 359515
 Fax: +44 (0) 1245 358938

SCALE: Not To Scale

DIMENSIONS: mm

TOLERANCES:
 ± 0.2mm unless
 otherwise stated

DRAWN BY: Johnson
 CHECKED BY: M Spooner
 APPROVED BY: M Spooner
 DATE: 05 Aug 10

TITLE:
FME Plug to FME Plug

PART NUMBER:
VRA601
 PAGE: 1 of 1