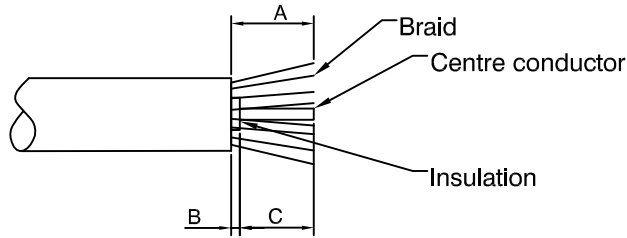


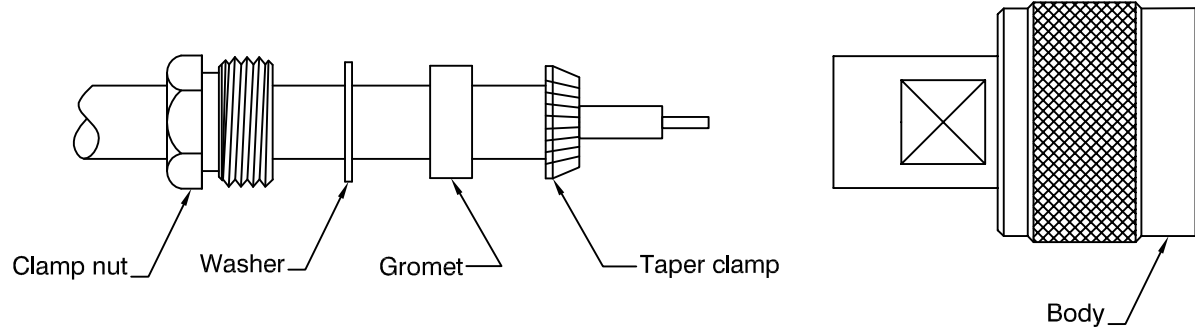
## Assembly Instructions

1) Strip the cable to the dimensions shown. Take care not to nick the centre conductor or braid.

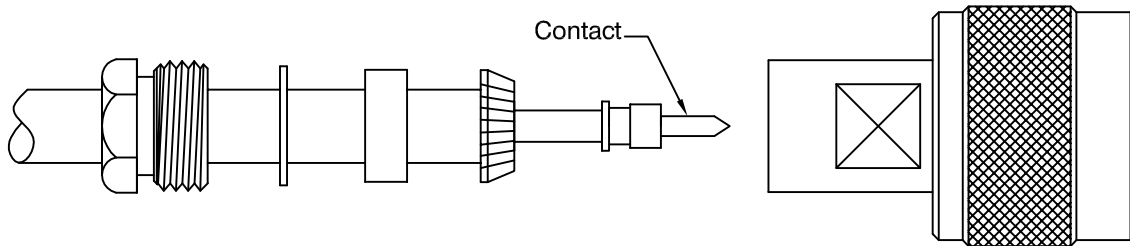
A = 4.5mm  
B = 0.5mm  
C = 4mm



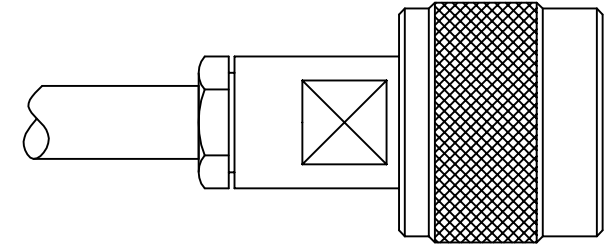
2) Tin the centre conductor. Slide the clamp nut, washer and grommet over the cable. Place the taper clamp over the braid and push back against the cable jacket. Pull the braid back over the taper clamp and trim level with the rear as shown.



3) Solder the contact onto the centre conductor.



4) Insert the cable and parts into the connector body. Tighten the clamp nut using the appropriate wrenches.



First Issue	JC	1	06 April 11
DESCRIPTION OF REVISION	APPVD	ISS	DATE



Cinch Connectivity Solutions, Ltd  
11 Bilton Road  
Chelmsford  
Essex CM1 2UP, England  
T: +44 (0) 1245 342060  
F: +44 124 535 8938

SCALE: Not To Scale

DIMENSIONS: mm

TOLERANCES:

DRAWN BY:

J CRACKNELL

CHECKED BY:

M SPOONER

APPROVED BY:

M SPOONER

DATE:

06 April 11

DESCRIPTION:

Stripping and Assembly  
Instructions for N Clamp Plug

DRAWING NUMBER:

**VAIN1205**

PAGE: 1 OF 1