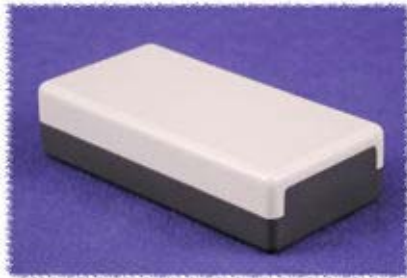




Two Piece - Fixed Panel Plastic Enclosures (MB Series)

[Home](#)
[Products](#)
[Distributors](#)
[Technical](#)
[Contact Us](#)
[Other Options](#)

Path: [Home](#) > [Enclosure Index](#) > **Two Piece - Fixed Panel - Plastic Enclosures**



click to enlarge

**Assembled View
(Top)**



click to enlarge

**Assembled View
(Bottom)**



click to enlarge

Open View

Key Features:

- Rugged electronic instrument enclosures, ideally suited for mounting printed circuit boards for hand-held, desktop or wall mount applications.
- Front and rear panels are integral part of bottom unit.
- Molded in polystyrene plastic.
- Designed to meet IP54.
- Assembled with four M3 x 0.5" (13 mm) Philips machine screws (included) threaded into integral brass bushings. Perfect for applications with repetitive assembly and disassembly are required. Screws are hidden in a recess in the base (see above - bottom view).
- Includes four self tapping screws for internal standoffs,
- Lid is a smooth light gray (RAL 7035) and the bottom is a smooth dark gray (RAL 7012).

| Part Number | Ventilated Lid | Units | Outside Dimensions | | | Internal Dimensions | | |
|-------------------|----------------|--------|--------------------|-------|-------|---------------------|-------|-------|
| | | | Length | Width | Depth | Length | Width | Depth |
| MB655030 | No | Inches | 2.56 | 1.97 | 1.18 | 1.93 | 1.73 | 0.94 |
| | | mm | 65 | 50 | 30 | 49 | 44 | 24 |
| MB655045 | No | Inches | 2.56 | 1.97 | 1.77 | 1.93 | 1.73 | 1.54 |
| | | mm | 65 | 50 | 45 | 49 | 44 | 39 |
| MB105025 | No | Inches | 3.94 | 1.97 | 0.98 | 3.78 | 1.73 | 0.75 |
| | | mm | 100 | 50 | 25 | 94 | 44 | 19 |
| MB105040 | No | Inches | 3.94 | 1.97 | 1.57 | 3.78 | 1.73 | 1.34 |
| | | mm | 100 | 50 | 40 | 96 | 44 | 34 |
| MB105040VL | Yes | Inches | 3.94 | 1.97 | 1.57 | 3.78 | 1.73 | 1.34 |
| | | mm | 100 | 50 | 40 | 96 | 44 | 34 |

| | | | | | | | | |
|-------------------|-----|--------|------|------|------|------|------|------|
| MB126540 | No | Inches | 4.72 | 2.56 | 1.57 | 4.49 | 2.32 | 1.34 |
| | | mm | 120 | 65 | 40 | 114 | 59 | 34 |
| MB126540VL | Yes | Inches | 4.72 | 2.56 | 1.57 | 4.49 | 2.32 | 1.34 |
| | | mm | 120 | 65 | 40 | 114 | 59 | 34 |
| MB126565 | No | Inches | 4.72 | 2.56 | 2.56 | 4.49 | 2.32 | 2.32 |
| | | mm | 120 | 65 | 65 | 114 | 59 | 59 |
| MB158055 | No | Inches | 5.91 | 3.15 | 2.17 | 5.67 | 2.91 | 1.97 |
| | | mm | 150 | 80 | 55 | 144 | 74 | 50 |
| MB158055VL | Yes | Inches | 5.91 | 3.15 | 2.17 | 5.67 | 2.91 | 1.97 |
| | | mm | 150 | 80 | 55 | 144 | 74 | 50 |
| MB158080 | No | Inches | 5.91 | 3.15 | 3.15 | 5.67 | 2.91 | 2.91 |
| | | mm | 150 | 80 | 80 | 144 | 74 | 74 |
| MB181160 | No | Inches | 7.4 | 4.33 | 2.36 | 7.17 | 4.09 | 2.13 |
| | | mm | 188 | 110 | 60 | 182 | 104 | 54 |
| MB181170 | No | Inches | 7.40 | 4.33 | 2.76 | 7.17 | 4.09 | 2.52 |
| | | mm | 188 | 110 | 70 | 182 | 104 | 64 |
| MB181170VL | Yes | Inches | 7.40 | 4.33 | 2.76 | 7.17 | 4.09 | 2.52 |
| | | mm | 188 | 110 | 70 | 182 | 104 | 64 |
| MB181110 | No | Inches | 7.40 | 4.33 | 3.94 | 7.17 | 4.09 | 3.70 |
| | | mm | 188 | 110 | 100 | 182 | 104 | 94 |
| MB181112 | No | Inches | 7.40 | 4.33 | 4.72 | 7.17 | 4.09 | 4.49 |
| | | mm | 188 | 110 | 120 | 182 | 104 | 114 |

Features (by photo):



click to enlarge

Assembled with machine screws into brass inserts for applications with repetitive assembly and disassembly



click to enlarge

Easy wall mounting with molded in key hole.

Exactly what you are looking for???

Link to our stocking distributors - most have "on-line" pricing, stock check and ordering!!!

Our Distributors

[Order from your favorite distributor](#)

[Home](#) | [Products](#) | [Distributors](#) | [Technical](#) | [Contact Us](#) | [Other Options](#)

Copyright; © 2005 Hammond Mfg Co Inc
URL: <http://www.hammondmfg.com>