

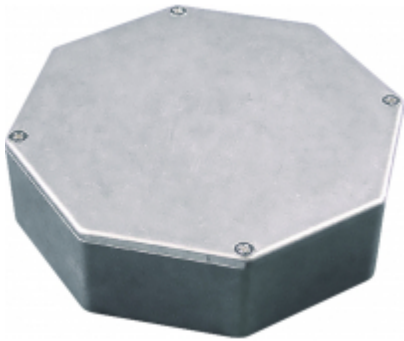


Quality Products. Service Excellence.

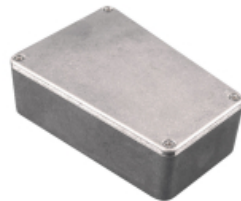
# Octagon & Trapezoid Diecast Aluminum Enclosures *1590TRP-STP Series*

Unusual Shapes for a Unique Look

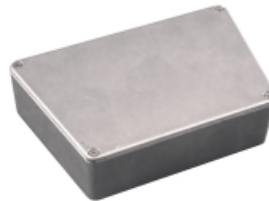
## Features



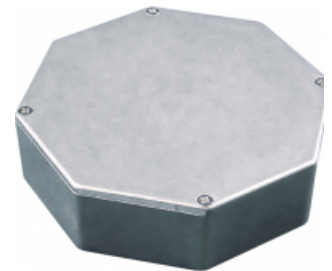
- Rugged, diecast aluminum alloy (tough - yet easy to machine), electronic instrument enclosure.
- Lap joint construction provides protection against access of dust and splashing water. Also provides for improved EMI/RFI shielding.
- Unpainted version is vibra finished for a smooth surface with no sharp edges.
- Our most popular application is "stomp box" usage - also available from stock - see our **1590 Stomp Box** series for more colors & traditional shapes.
- Four 6-32 x 1/2" machine screws secure lid - into factory tapped holes.
- Designed to meet IP54.
- Low side wall draft angle (2 degrees or less) for easy P.C. board mounting.
- Replacement screws for natural finish series, machine type, nickel plated, 6-32 x 1/2" - **1590MS100** - Package of 100
- Replacement screws for black series, 6-32 x 1/2" - **1590MS50BK** - Package of 50



1590TRPB "Short Trapezoid"



1590TRPC "Long Trapezoid"



1590STPC "Octagon"

## Standard Version

Part No. Unpainted	Part No. Black	Length	Width		Depth
			Small End	Large End	
1590TRPB	1590TRPBBK	4.41	2.42	3.11	1.54
1590TRPC	1590TRPCBK	3.74	4.79	5.95	1.54
1590STPC	1590STPCBK	5.23	5.23	5.23	1.54

## Water-Tight Version (Includes Gasket)

Part No. Unpainted	Part No. Black	Length	Width		Depth
			Small End	Large End	
1590WTRPB	1590WTRPBBK	4.41	2.42	3.11	1.54
1590WTRPC	1590WTRPCBK	3.74	4.79	5.95	1.54
1590WSTPC	1590WSTPCBK	5.23	5.23	5.23	1.54

Data subject to change without notice

