



Quality Products. Service Excellence.

## Type 4X, 6P Polycarbonate & General Purpose ABS Enclosures 1555

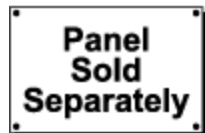
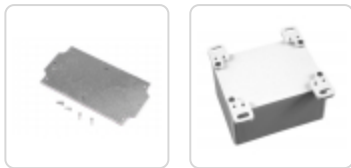
Series

Watertight, Styled Lid, UL Listed Options



### Key Features

- Ideally suited for mounting printed circuit boards or DIN rail mounted components (see photo features below for details).
- “Styled” lid version has three main advantages over our flat lid (1554 series) - also see photo features below:
  - Smooth recessed surface on lid for a membrane keypad or label
  - Standoffs molded in the interior of the lid (except for size “B”). Designed for #6 self tapping screws
  - More modern “styled” look vs. our traditional flat lid (1554 series)
- ABS Versions are molded from general purpose material which carries a flammability rating of UL94-HB. For indoor use.
- Polycarbonate versions are UV stabilized for outdoor use. Gray polycarb carries a UL94-5VA rating.
- Polycarbonate versions are UL 508A listed (File # E65324).
- Enclosure color is a light gray (RAL 7035).
- Gasketed lid with two piece “tongue & groove” construction provides protection against access of oil, dust and water.
- Replaceable gasket is one piece made from high temperature, U.L. listed silicone. Supplied loose inside the enclosure (not pre-installed).
- Polycarb versions are designed to meet NEMA Type 4, 4X, 6, 6P, 12 & 13 ratings which meet and exceed IP ratings up to and including IP68. (Except 1554/55 V size which is 4,4X only)
- ABS Plastic versions are designed to meet IP66.
- Lid is secured with included M4 stainless steel machine screws which are threaded into corrosion resistant bushings for repetitive assembly & disassembly. All hardware is designed to avoid corrosion caused by harsh environments over time.
- Lid screws are self captivating (lid holes are threaded with the first installation of lid screws).
- Internal features are maximized for mounting options and vary with size:
- Internal DIN rail mounting tabs molded into most models, except sizes “C” and “D”.
- Threaded (M3) integral brass inserts and/or standoffs (for #6 self tapping screws) for P.C. board or inner panel mounting in all but the smallest size (“B”).
- Vertical P.C. card guides (for 1.5 mm thick P.C. boards) are molded in all but the smallest size (“B”).



### Photo Features:



Styled lid offers a modern look and a smooth recess perfect for membrane keypads or labels



Standoffs molded in the interior of the lid (except for size "B"). Designed for #6 self tapping screws

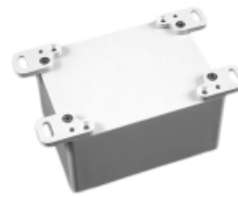


Galvanized steel inner panels are available (refer to table below).

Wall-mounting holes are located outside of the gasket channel

Same wall mounting holes can be used to install an accessory foot kit, **1554FT**

Internal mounting posts can be used to mount accessory inner panels, PC boards, or DIN rails (inner panel shown)



### Accessories

- Inner Panels
- Pole Mount Kit
- Breather Kit
- Liquid-Tight, Strain Relief Cordgrips
- Replacement Gaskets
- Pressure Compensation Plug
- Small Rainproof Ventilator
- Hole Plugs

### Part Numbers

| ABS      | Polycarbonate (UL Listed) |                   |        |       |              |             |          |                    |                      | Replacement |
|----------|---------------------------|-------------------|--------|-------|--------------|-------------|----------|--------------------|----------------------|-------------|
| Gray Lid | Gray Lid                  | Qty of Lid Screws | Length | Width | Total Height | Inner Panel | Foot Kit | Replacement Gasket | Lid Screws (50-pack) |             |
| 1555BGY  | 1555B2GY                  | 4                 | 2.60   | 2.60  | 1.60         | 1554BPL     | 1554FT   | 1554BGASKET        | SC576-50             |             |
| 1555EGY  | 1555E2GY                  | 4                 | 3.50   | 3.50  | 2.40         | 1554EPL     | 1554FT   | 1554EGASKET        | SC576-50             |             |
| 1555EEGY | 1555EE2GY                 | 4                 | 3.50   | 3.50  | 3.50         | 1554EPL     | 1554FT   | 1554EGASKET        | SC576-50             |             |
| 1555LGY  | 1555L2GY                  | 4                 | 4.13   | 4.13  | 2.36         | 1554LPL     | 1554FT   | 1554LGASKET        | SC576-50             |             |
| 1555LAGY | 1555LA2GY                 | 4                 | 4.13   | 4.13  | 3.54         | 1554LPL     | 1554FT   | 1554LGASKET        | SC576-50             |             |
| 1555CGY  | 1555C2GY                  | 4                 | 4.70   | 2.60  | 1.60         | 1554CPL     | 1554FT   | 1554CGASKET        | SC576-50             |             |
| 1555DGY  | 1555D2GY                  | 4                 | 4.70   | 2.60  | 2.40         | 1554CPL     | 1554FT   | 1554CGASKET        | SC576-50             |             |
| 1555FGY  | 1555F2GY                  | 4                 | 4.70   | 3.50  | 2.40         | 1554FPL     | 1554FT   | 1554FGASKET        | SC576-50             |             |
| 1555GGY  | 1555G2GY                  | 4                 | 4.70   | 3.50  | 3.15         | 1554FPL     | 1554FT   | 1554FGASKET        | SC576-50             |             |
| 1555NGY  | 1555N2GY                  | 4                 | 4.70   | 4.70  | 2.40         | 1554NPL     | 1554FT   | 1554NGASKET        | SC576-50             |             |
| 1555PGY  | 1555P2GY                  | 4                 | 4.70   | 4.70  | 3.50         | 1554NPL     | 1554FT   | 1554NGASKET        | SC576-50             |             |
| 1555QGY  | 1555Q2GY                  | 4                 | 5.51   | 5.51  | 2.36         | 1554QPL     | 1554FT   | 1554QGASKET        | SC576-50             |             |
| 1555QAGY | 1555QA2GY                 | 4                 | 5.51   | 5.51  | 3.54         | 1554QPL     | 1554FT   | 1554QGASKET        | SC576-50             |             |
| 1555JLGY | 1555JL2GY                 | 4                 | 6.30   | 3.50  | 1.80         | 1554JPL     | 1554FT   | 1554JGASKET        | SC576-50             |             |
| 1555JGY  | 1555J2GY                  | 4                 | 6.30   | 3.50  | 2.40         | 1554JPL     | 1554FT   | 1554JGASKET        | SC576-50             |             |
| 1555KGY  | 1555K2GY                  | 4                 | 6.30   | 3.50  | 3.50         | 1554JPL     | 1554FT   | 1554JGASKET        | SC576-50             |             |
| 1555RGY  | 1555R2GY                  | 4                 | 6.30   | 6.30  | 2.40         | 1554RPL     | 1554FT   | 1554RGASKET        | SC576-50             |             |

| ABS<br>Gray Lid | Polycarbonate (UL Listed) |          | Qty of Lid Screws | Length | Width | Total Height | Inner Panel | Foot Kit  | Replacement Gasket | Replacement          |
|-----------------|---------------------------|----------|-------------------|--------|-------|--------------|-------------|-----------|--------------------|----------------------|
|                 | Gray Lid                  | Gray Lid |                   |        |       |              |             |           |                    | Lid Screws (50-pack) |
| 1555SGY         | 1555S2GY                  |          | 4                 | 6.30   | 6.30  | 3.50         | 1554RPL     | 1554FT    | 1554RGASKET        | SC576-50             |
| 1555HLGY        | 1555HL2GY                 |          | 4                 | 7.10   | 4.70  | 1.80         | 1554HPL     | 1554FT    | 1554HGASKET        | SC576-50             |
| 1555HGY         | 1555H2GY                  |          | 4                 | 7.10   | 4.70  | 2.40         | 1554HPL     | 1554FT    | 1554HGASKET        | SC576-50             |
| 1555TGY         | 1555T2GY                  |          | 4                 | 7.10   | 4.70  | 3.50         | 1554HPL     | 1554FT    | 1554HGASKET        | SC576-50             |
| 1555WGY         | 1555W2GY                  |          | 4                 | 7.10   | 7.10  | 2.36         | 1554WPL     | 1554FT    | 1554WGASKET        | SC576-50             |
| 1555WAGY        | 1555WA2GY                 |          | 4                 | 7.10   | 7.10  | 3.54         | 1554WPL     | 1554FT    | 1554WGASKET        | SC576-50             |
| 1555UGY         | 1555U2GY                  |          | 4                 | 7.90   | 4.70  | 3.50         | 1554UPL     | 1554FT    | 1554UGASKET        | SC576-50             |
| 1555VGY         | 1555V2GY                  |          | 4                 | 9.40   | 6.30  | 3.50         | 1554VPL     | 1554FT    | 1554VGASKET        | SC583-50             |
| 1555VALGY       | 1555VAL2GY                |          | 6                 | 9.40   | 6.30  | 2.36         | 1554VAPL    | 1554FT    | 1554VAGASKET       | SC583-50             |
| 1555VAGY        | 1555VA2GY                 |          | 6                 | 9.40   | 6.30  | 3.50         | 1554VAPL    | 1554FT    | 1554VAGASKET       | SC583-50             |
| 1555VBGY        | 1555VB2GY                 |          | 6                 | 9.40   | 6.30  | 4.70         | 1554VAPL    | 1554FT    | 1554VAGASKET       | SC583-50             |
| 1555XGY         | 1555X2GY                  |          | 6                 | 11.81  | 7.87  | 3.54         | 1554XPL     | 1554FT-XY | 1554XGASKET        | SC583-50             |
| 1555XAGY        | 1555XA2GY                 |          | 6                 | 11.81  | 7.87  | 4.72         | 1554XPL     | 1554FT-XY | 1554XGASKET        | SC583-50             |
| 1555YGY         | 1555Y2GY                  |          | 6                 | 11.81  | 9.45  | 3.74         | 1554YPL     | 1554FT-XY | 1554YGASKET        | SC583-50             |
| 1555YAGY        | 1555YA2GY                 |          | 6                 | 11.81  | 9.45  | 4.72         | 1554YPL     | 1554FT-XY | 1554YGASKET        | SC583-50             |

*Data subject to change without notice*

© 2021. Hammond Manufacturing Ltd. All rights reserved.