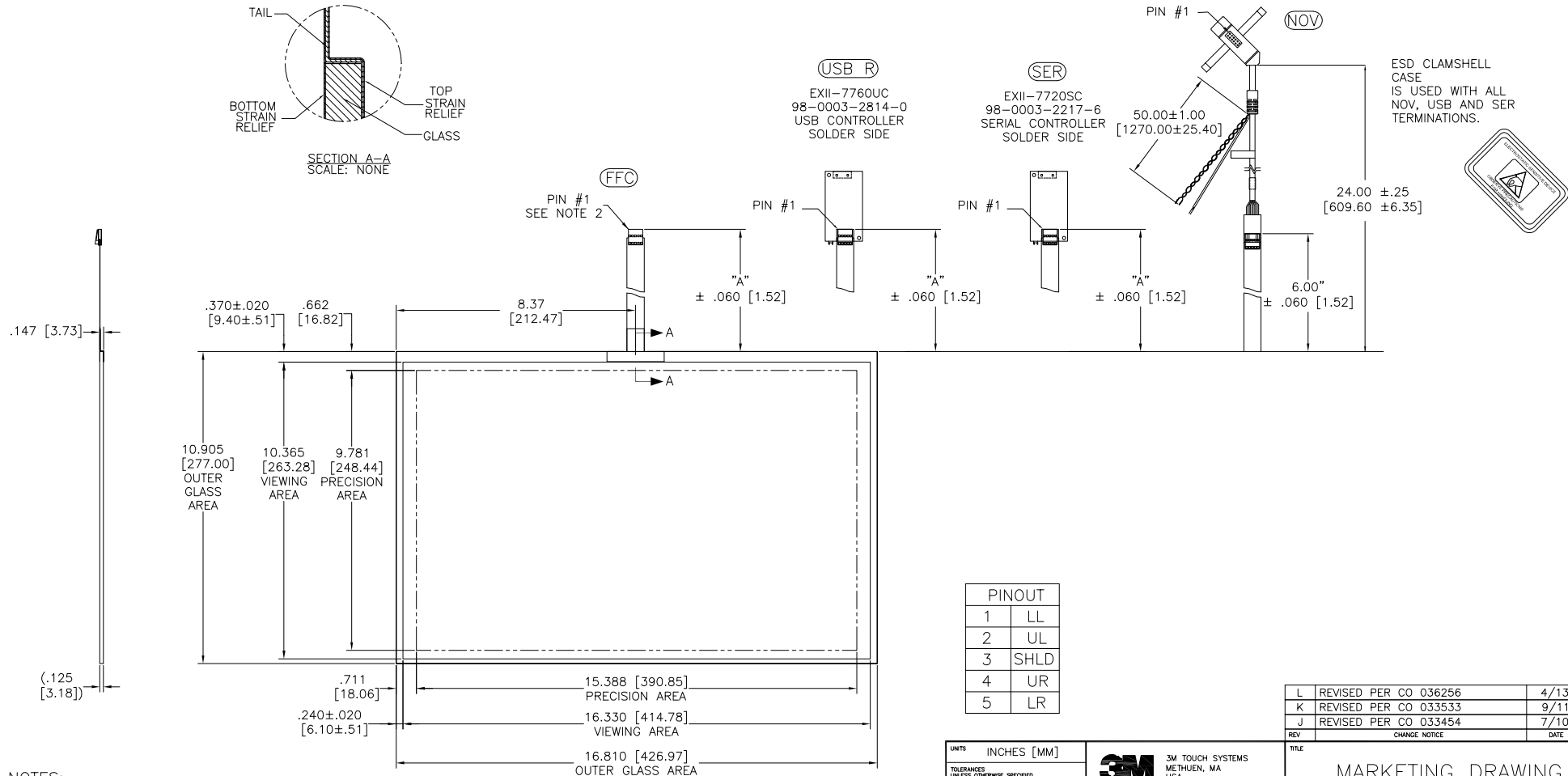
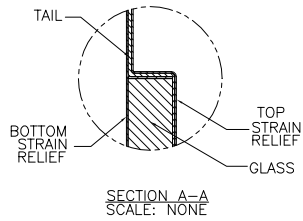


OGA DIAGONAL: 20.04 [508.95]
 VA DIAGONAL: 19.34 [491.28]
 PA DIAGONAL: 18.23 [463.13]

TOP LEVEL NUMBER	US NUMBER	TYPE	DIM "A" (TOTAL GLASS TO CONNECTOR)	A/G FINISH	PROD SPEC
17-9251-204	98-0003-2206-9	FFC	6.00" [152.40]	AG500	23655
17-9251-205	98-0003-2716-7	FFC	8.00" [203.20]	AG500	23655
17-9251-206	98-0003-2717-5	NOV	SEE DWG	AG500	23655
17-9251-223	98-0003-2208-5	SER	6.00" [152.40]	AG500	23655
17-9251-227	98-0003-2720-9	SER	8.00" [203.20]	AG500	23655
17-9251-220	98-0003-2718-3	USB R	6.00" [152.40]	AG500	23655
17-9251-226	98-0003-3046-8	USB R	8.00" [203.20]	AG500	23655
N/A	98-0003-3415-5	FFC	8.00" [203.20]	WC100	34523
N/A	98-0003-3416-3	USB R	8.00" [203.20]	WC100	34523
N/A	98-0003-3417-1	SER	8.00" [203.20]	WC100	34523



NOTES:

1. WEIGHT OF GLASS IN GRAMS: 927±10%
2. NICOMATIC HOUSING P/N: OLO5
 NICOMATIC RECEPTACLES (PINS) MATTE TIN PLATED P/N: 14106-12
 HOUSING ORIENTED WITH LATCH DOWN

PINOUT	
1	LL
2	UL
3	SHLD
4	UR
5	LR

UNITS	INCHES [MM]
TOLERANCES UNLESS OTHERWISE SPECIFIED	
.X	± .03 [.76]
.XX	± .015 [.38]
.XXX	± .01 [.25]
ANGLES	± 1°

3M 3M TOUCH SYSTEMS
 METHUEN, MA USA
 © COPYRIGHT 2004
 THIS DOCUMENT IS COPYRIGHTED PROPERTY OF THE 3M COMPANY AND MAY NOT BE REPRODUCED WITHOUT 3M WRITTEN PERMISSION OR USED OR DISCLOSED FOR OTHER THAN 3M AUTHORIZED PURPOSES.

L	REVISED PER CO 036256	4/13	SB
K	REVISED PER CO 033533	9/11	SB
J	REVISED PER CO 033454	7/10	SB
REV	CHANGE NOTICE	DATE	DRW

TITLE
MARKETING DRAWING
SCT32NN 19.34" W

THIRD ANGLE PROJECTION

DO NOT SCALE DRAWING

SCALE 1 = 1

DRAWN MTD 9/7/06

CAD FORMAT AUTOCAD SHEET 1 OF 1

SIZE C DOCUMENT NO. 32739-MKT REV L