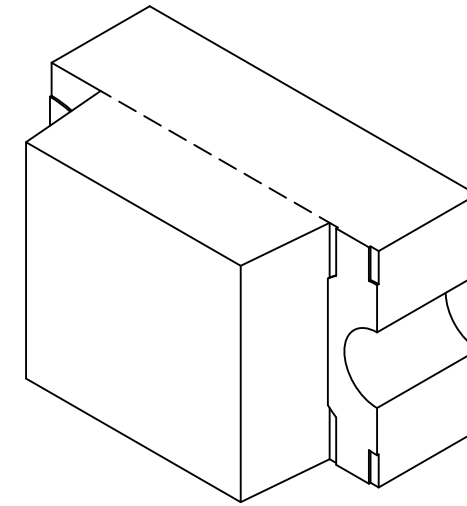
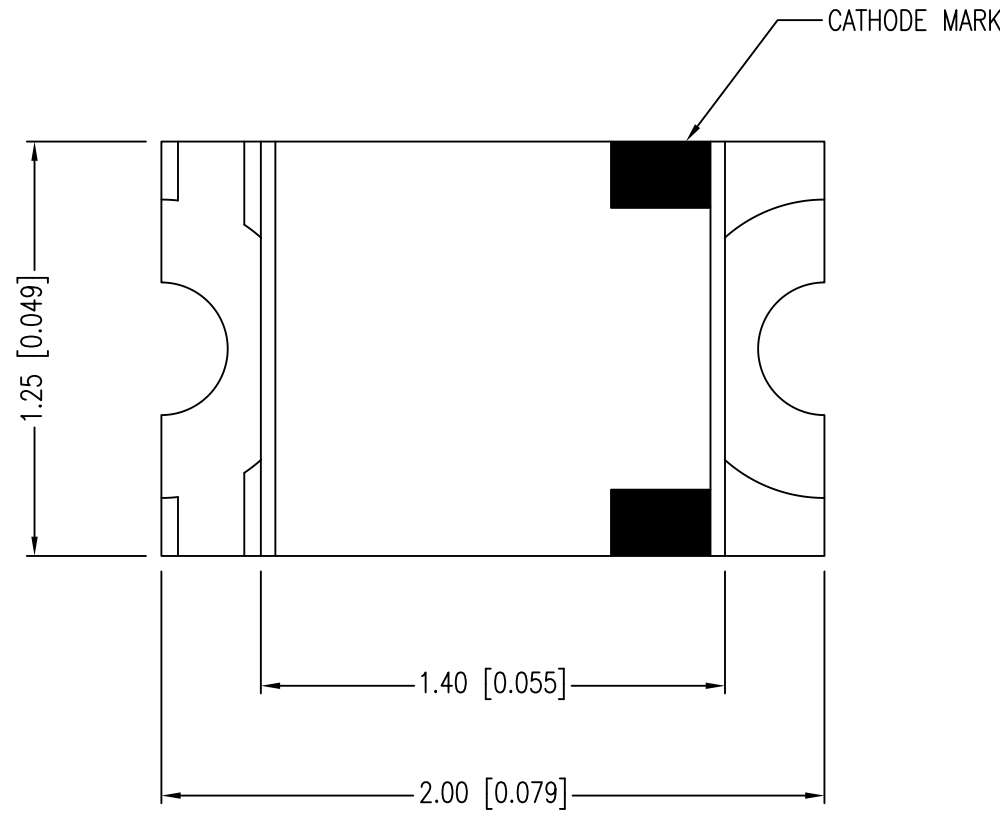
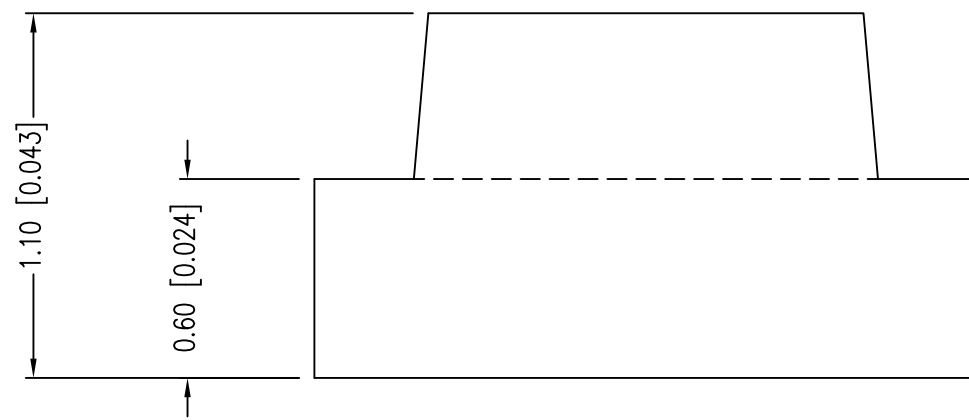


| | | | |
|-------------|-------------------------------------|------|---|
| PART NUMBER | SML-LX0805SIC-TR | REV. | F |
| DATE | E.C.N. NUMBER AND REVISION COMMENTS | REV. | |
| 05.09.02 | E.C.N. #10862. | A | |
| 03.14.03 | E.C.N. #10967. | B | |
| 01.17.05 | E.C.N. #11148. | C | |
| 03.06.09 | E.C.N. #11508. | D | |
| 05.07.12 | E.C.N. #10BRDR & REDRAWN. | E | |
| 11.06.18 | ECN-Lumex201800168 | F | |



| ELECTRO-OPTICAL CHARACTERISTICS $T_a=25^\circ\text{C}$ $I_f=20\text{mA}$ | | | | | |
|--|-------------|-----|-----|--------------|----------------------|
| PARAMETER | MIN | TYP | MAX | UNITS | TEST COND |
| PEAK WAVELENGTH | | 636 | | nm | |
| FORWARD VOLTAGE | | 2.0 | 2.6 | Vf | |
| REVERSE VOLTAGE | 5.0 | | | Vr | $I_r=100\mu\text{A}$ |
| AXIAL INTENSITY | | 60 | | mcd | $I_f=20\text{mA}$ |
| VIEWING ANGLE | | 140 | | 2x theta 1/2 | |
| EMITTED COLOR: | RED | | | | |
| LENS FINISH: | WATER CLEAR | | | | |

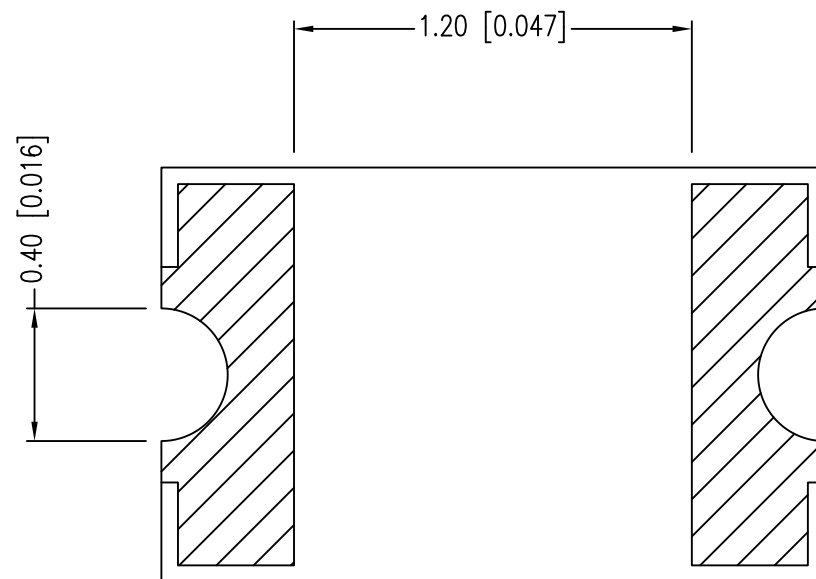
ANODE CATHODE



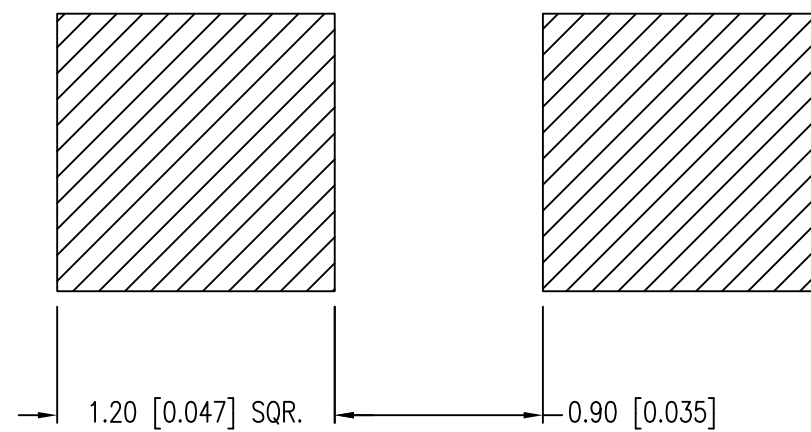
| LIMITS OF SAFE OPERATION AT 25°C | | |
|----------------------------------|------------|-------|
| PARAMETER | MAX | UNITS |
| PEAK FORWARD CURRENT* | 160 | mA |
| STEADY CURRENT | 30 | mA |
| POWER DISSIPATION | 100 | mW |
| DERATE FROM 25°C | -1.2 | mW/°C |
| OPERATING TEMP. | -40 TO +85 | °C |
| STORAGE TEMP. | -40 TO +90 | °C |

* $t < 10\mu\text{s}$

CAUTION: MOISTURE SENSITIVE DEVICE
PER JEDEC LEVEL 3 STANDARDS



RECOMMENDED SOLDER PAD LAYOUT



*UNLESS OTHERWISE SPECIFIED TOLERANCES PER DECIMAL PRECISION ARE: X=±1 (±0.039), X.X=±0.5 (±0.020), X.XX=±0.25 (±0.010), X.XXX=±0.127 (±0.005). LEAD SIZE=±0.05 (±0.002), LEAD LENGTH=±0.75 (±0.030). MIN= $\frac{+0.00}{-0.00}$ DECIMAL PRECISION MAX.= $\frac{+0.00}{-0.00}$ DECIMAL PRECISION



425 N. GARY AVE.
CAROL STREAM, IL 60188-4900
PHONE: 800-278-5666
FAX: 630-315-2152
WEB: WWW.LUMEX.COM

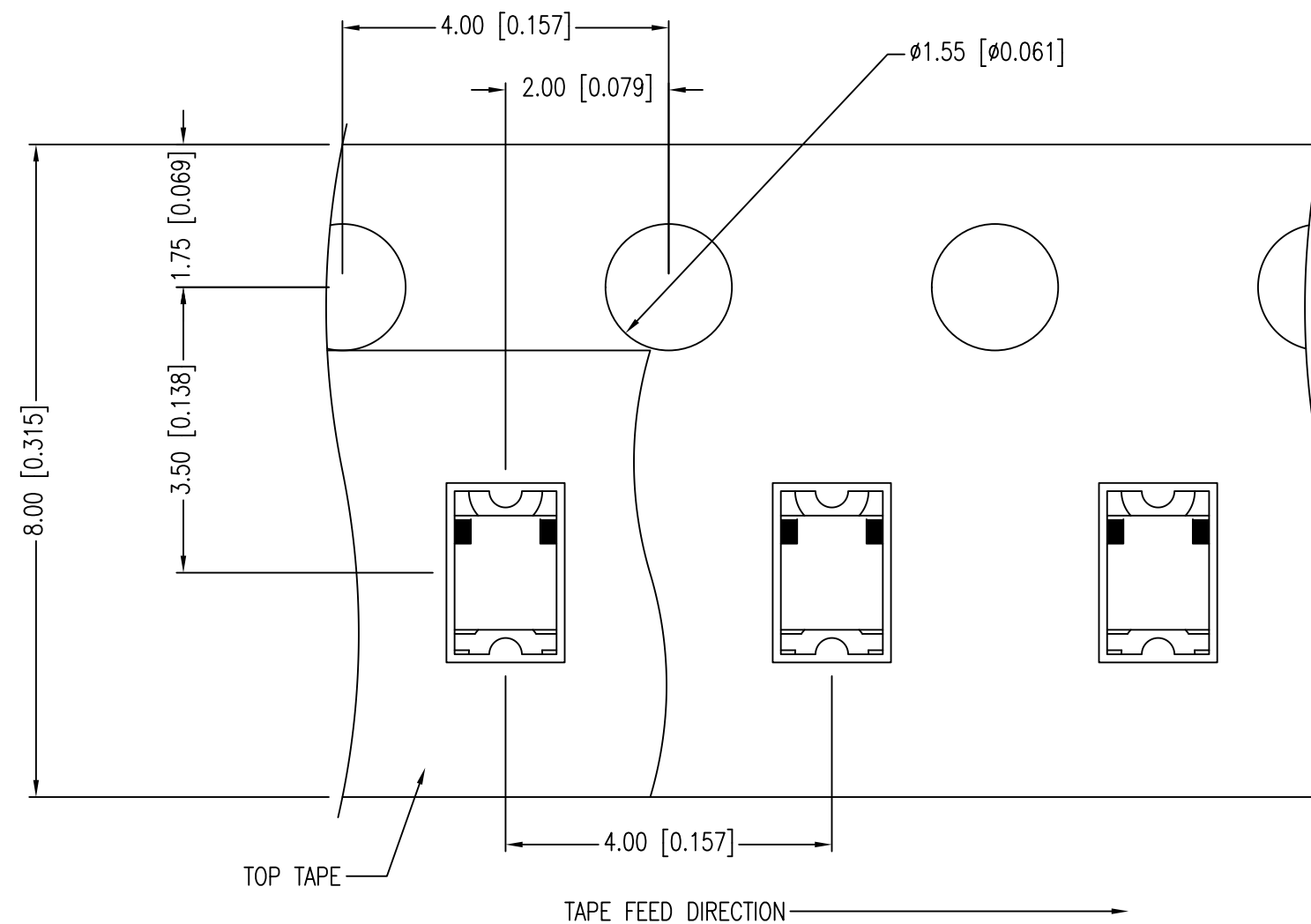
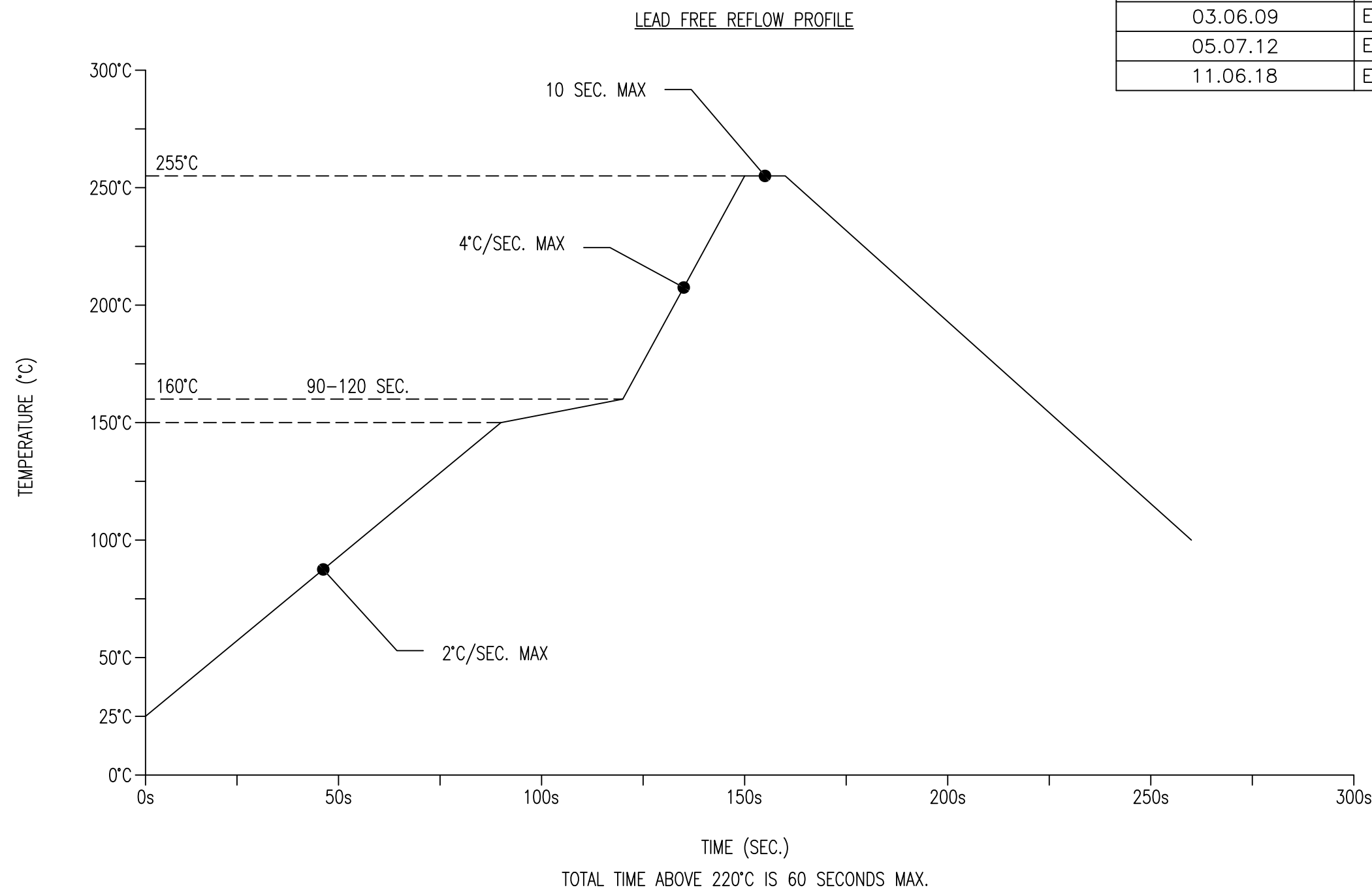
2.0mm x 1.25mm PCB SURFACE MOUNT, 636nm AMBER LED, WATER CLEAR LENS, TAPE AND REEL, 3K PER REEL.

THE SPECIFICATIONS MAY CHANGE AT ANY TIME WITHOUT NOTICE

CONFIDENTIAL INFORMATION
THE INFORMATION CONTAINED IN THIS DOCUMENT IS THE PROPERTY OF LUMEX INC. EXCEPT AS SPECIFICALLY AUTHORIZED IN WRITING BY LUMEX INC., THE HOLDER OF THIS DOCUMENT SHALL KEEP ALL INFORMATION CONTAINED HEREIN CONFIDENTIAL AND SHALL PROTECT SAME IN WHOLE OR IN PART FROM DISCLOSURE AND DISSEMINATION TO ALL THIRD PARTIES.

| | | | |
|--------|-----------|-----------|------|
| DATE: | 11.06.18 | DRAWN BY: | C.S. |
| PAGE: | 1 OF 2 | CHKD BY: | E.C. |
| SCALE: | NTS | APRVD BY: | G.Y. |
| UNIT: | mm [INCH] | | |

| | | | |
|-------------|-------------------------------------|------|---|
| PART NUMBER | SML-LX0805SIC-TR | REV. | F |
| DATE | E.C.N. NUMBER AND REVISION COMMENTS | REV. | |
| 05.09.02 | E.C.N. #10862. | A | |
| 03.14.03 | E.C.N. #10967. | B | |
| 01.17.05 | E.C.N. #11148. | C | |
| 03.06.09 | E.C.N. #11508. | D | |
| 05.07.12 | E.C.N. #10BRDR & REDRAWN. | E | |
| 11.06.18 | ECN-Lumex201800168 | F | |



NOTES:

1. POLARITY MARK IS ORIENTED TOWARDS TAPE SPROCKET HOLE.

*UNLESS OTHERWISE SPECIFIED TOLERANCES PER DECIMAL PRECISION ARE: X=±1 (±0.039), X.X=±0.5 (±0.020), X.XX=±0.25 (±0.010), X.XXX=±0.127 (±0.005). LEAD SIZE=±0.05 (±0.002), LEAD LENGTH=±0.75 (±0.030). MIN= $\begin{matrix} +\text{DECIMAL PRECISION} \\ -0.00 \end{matrix}$ MAX.= $\begin{matrix} +0.00 \\ -\text{DECIMAL PRECISION} \end{matrix}$



425 N. GARY AVE.
CAROL STREAM, IL 60188-4900
PHONE: 800-278-5666
FAX: 630-315-2152
WEB: WWW.LUMEX.COM

2.0mm x 1.25mm PCB SURFACE MOUNT, 636nm AMBER LED, WATER CLEAR LENS, TAPE AND REEL, 3K PER REEL.

THE SPECIFICATIONS MAY CHANGE AT ANY TIME WITHOUT NOTICE

CONFIDENTIAL INFORMATION
THE INFORMATION CONTAINED IN THIS DOCUMENT IS THE PROPERTY OF LUMEX INC. EXCEPT AS SPECIFICALLY AUTHORIZED IN WRITING BY LUMEX INC., THE HOLDER OF THIS DOCUMENT SHALL KEEP ALL INFORMATION CONTAINED HEREIN CONFIDENTIAL AND SHALL PROTECT SAME IN WHOLE OR IN PART FROM DISCLOSURE AND DISSEMINATION TO ALL THIRD PARTIES.

| | | | |
|--------|-----------|-----------|------|
| DATE: | 11.06.18 | DRAWN BY: | C.S. |
| PAGE: | 2 OF 2 | CHKD BY: | E.C. |
| SCALE: | NTS | APRVD BY: | G.Y. |
| UNIT: | mm [INCH] | | (Pb) |