

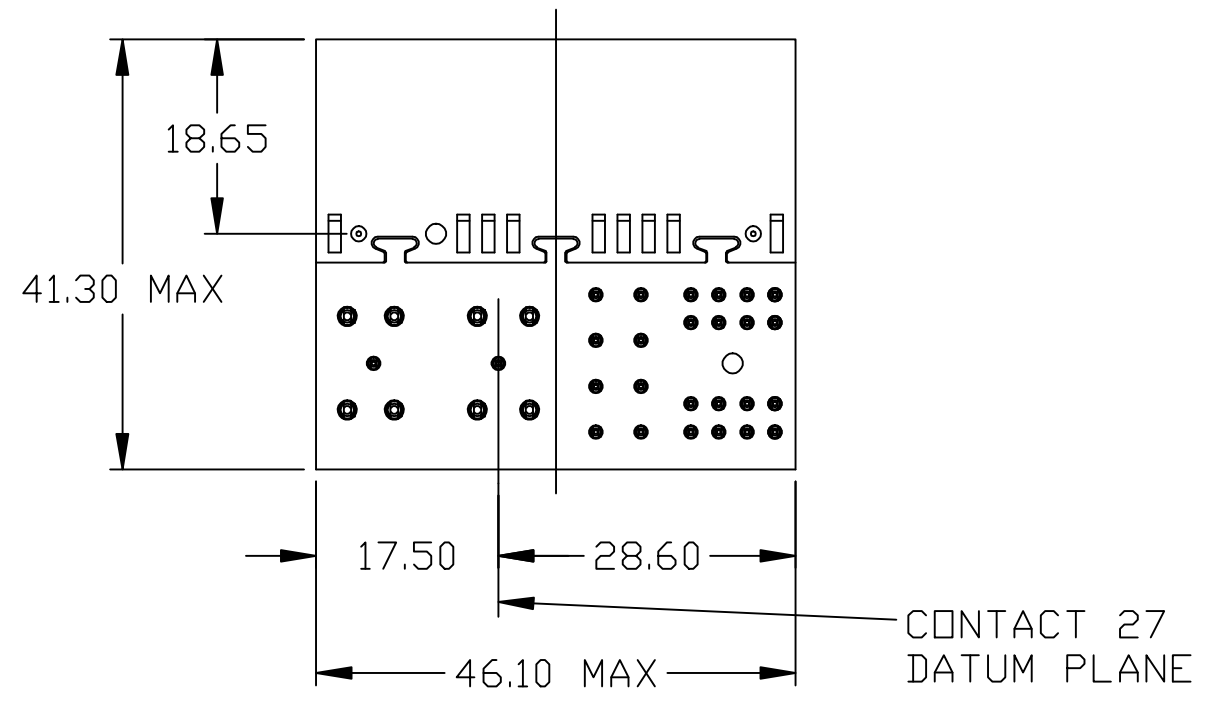
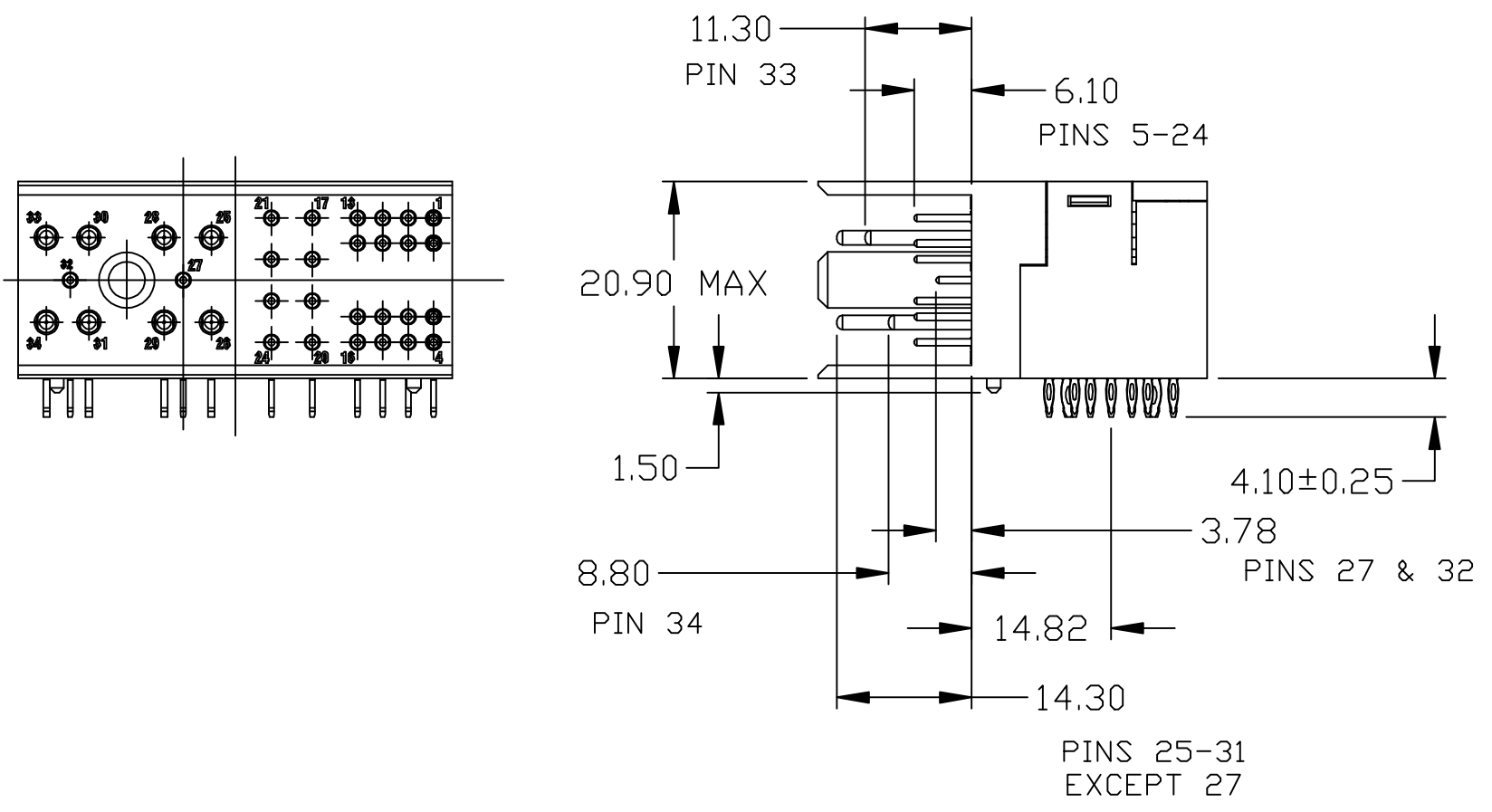
3M™ POWER RIGHT ANGLE MALE CONNECTOR FOR ATCA APPLICATIONS

- NOTES:
- MATERIALS AND FINISH:
INSULATOR: GLASS FILLED POLYESTER (PBT) UL94V-0
CONTACTS: COPPER ALLOY
 - PLATING:
-ES
FINISH: 0.76um MIN Au
UNDERCOAT: 1.27um MIN Ni
-G
FINISH: 0.25um MIN Au
UNDERCOAT: 1.27um MIN Ni
-DA
FINISH: 0.08um MIN Au
UNDERCOAT: 1.27um MIN Ni
 - ELECTRICAL CHARACTERISTICS
INSULATION RESISTANCE --- 5×10^9 OHMS
INITIAL CONTACT RESISTANCE
POWER CONTACT ----- 2.2 MILLIOHMS MAX
SIGNAL CONTACT ----- 8.5 MILLIOHMS MAX
VOLTAGE PROOF
PIN 1-16: 1000 VR.M.S
PIN 17-34: 2000 VR.M.S
CURRENT CARRYING CAPACITY
SIGNAL PINS: 1A
POWER PINS: 16A
 - SEE THE REGULATORY INFORMATION APPENDIX (RIA) IN THE "RoHS COMPLIANCE" SECTION OF: WWW.3MCONNECTOR.COM FOR COMPLIANCE INFORMATION (RIA E1 & C1 APPLY).
 - REFERENCE DOCUMENT: 78-9101-3345-9
 - IN THE EVENT OF CONFLICT BETWEEN THIS DATA AND THAT CONTAINED IN THE PRODUCT SPEC., THE PRODUCT SPEC. TAKES PRECEDENT.
 - PART No.:

PART DESCRIPTION	CONTACT POSITIONS
2P01-0100-XX	34
2P01-0200-XX	30, EXCEPT POSITIONS 1-4
2P01-0300-XX	22, EXCEPT POSITIONS 1-4, 17-24

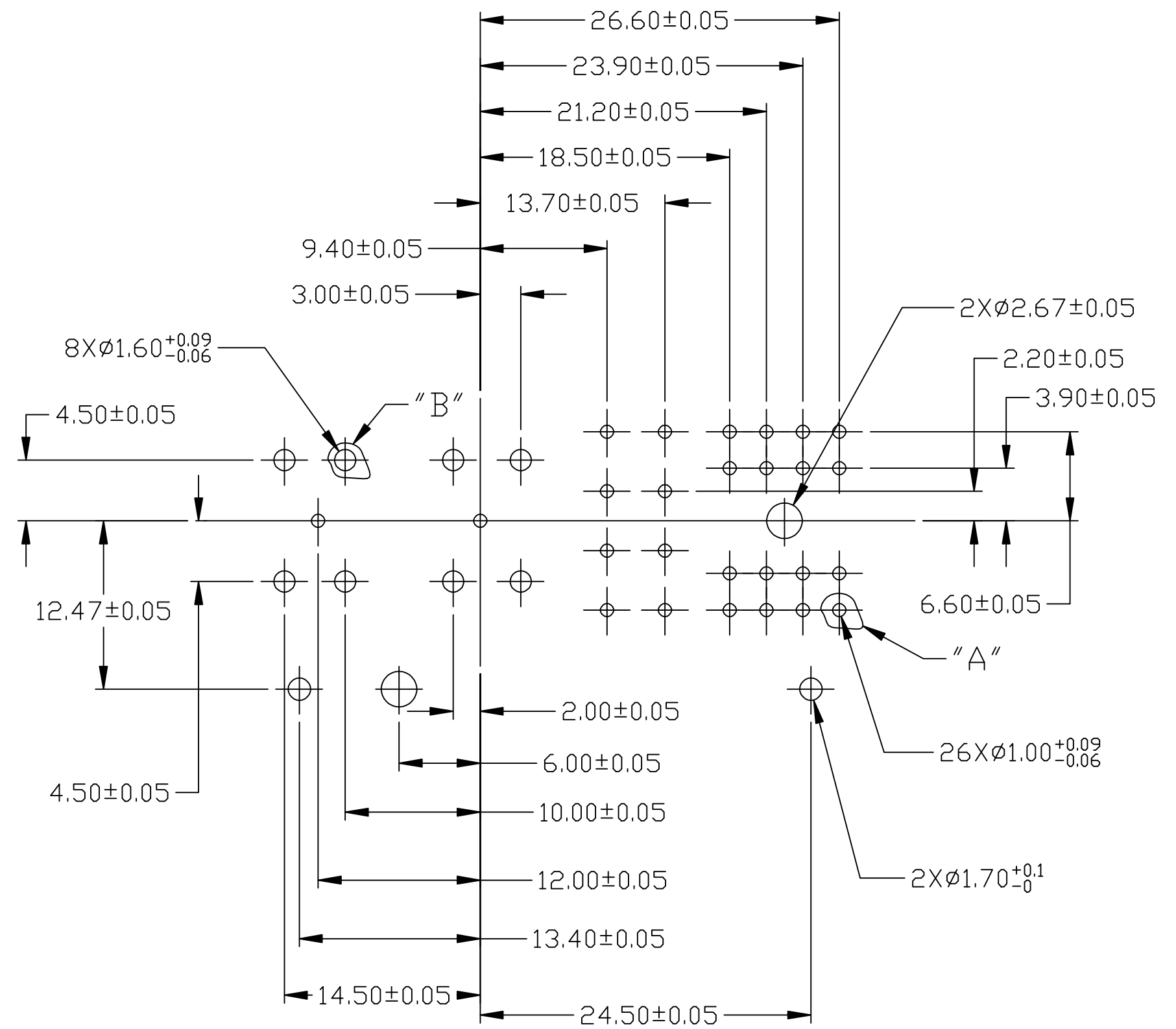
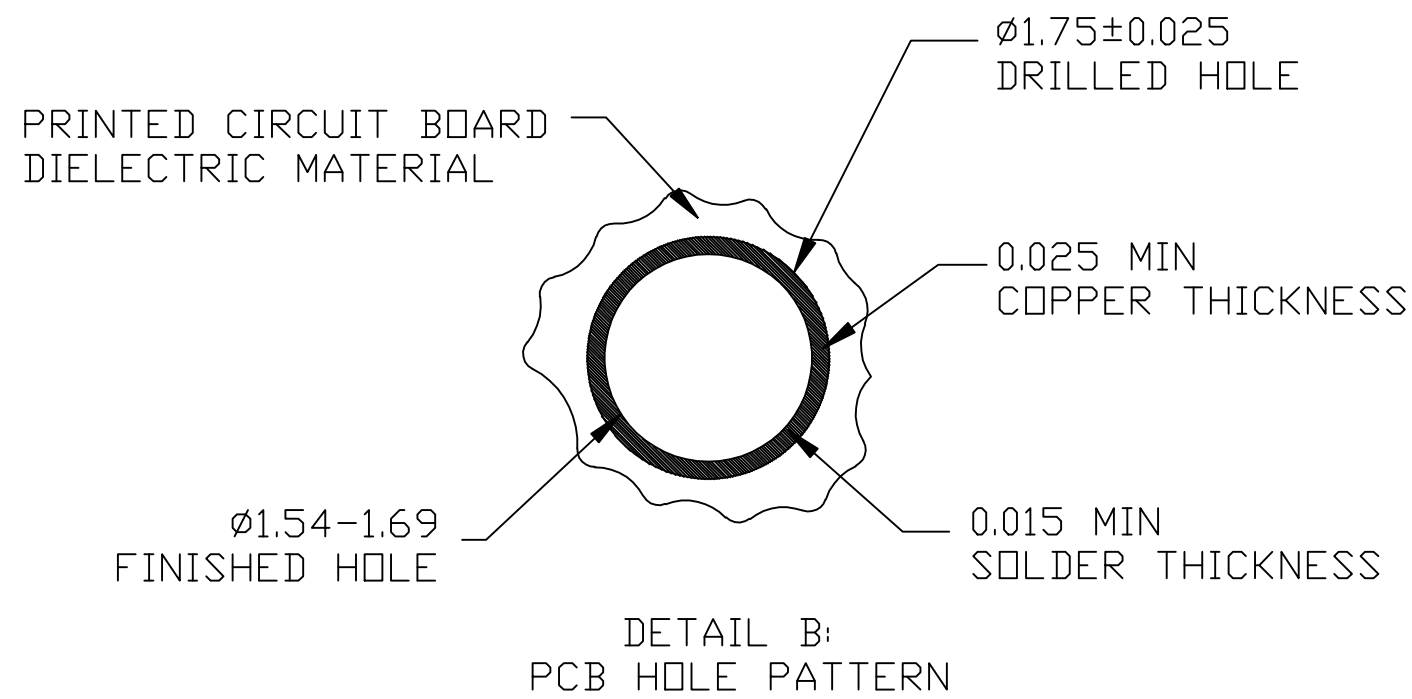
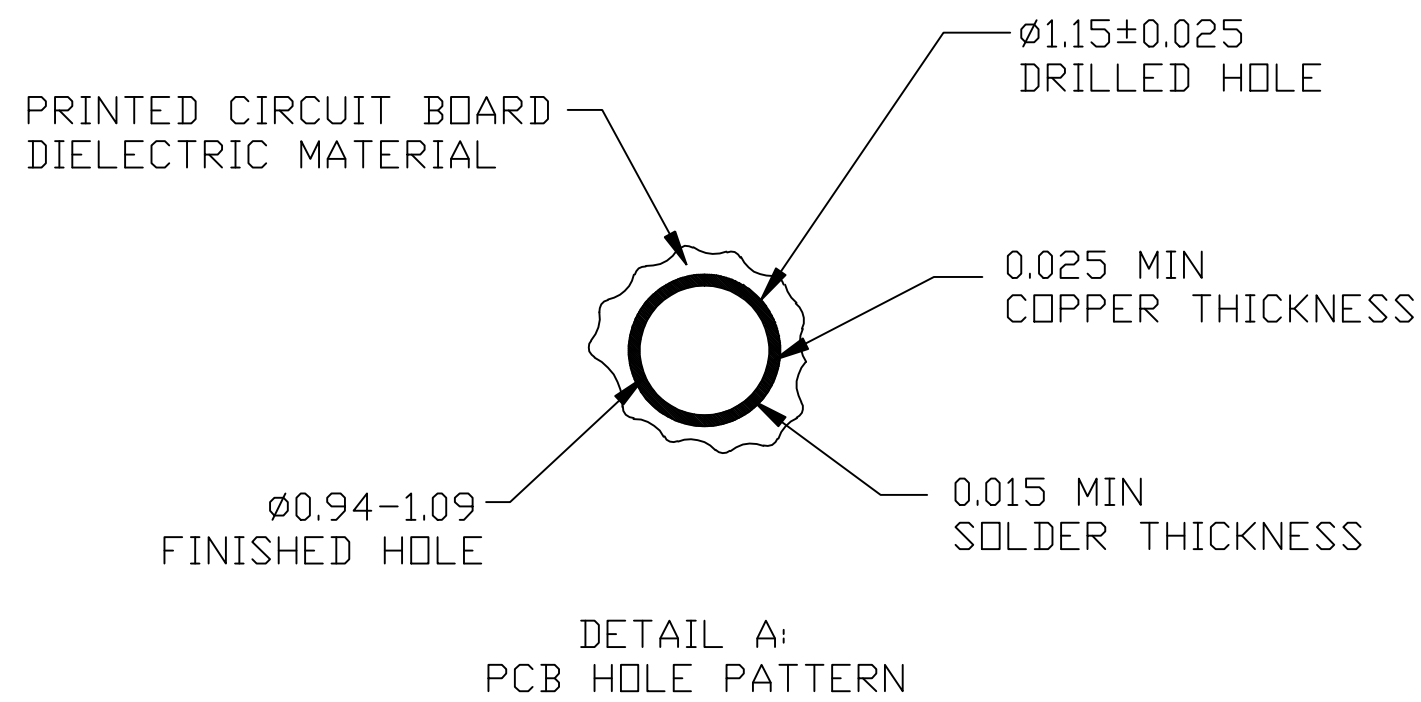
-XX IS PLATING TYPE

- FOR MATING PRODUCT USE:
2P02-0X00-XX ATCA POWER BACKPLANE FEMALE CONNECTOR
- PCB THICKNESS: MINIMUM:2.00MM
MAXIMUM:5.00MM



DESIGN REFERENCE	NEXT ASSEMBLY	REV	ECO	ISSUE DATE AND DESCRIPTION	DRFT	CHKD
		DRFT	ML	DATE 1/10/11 MFG		DATE
		CHKD	TS	DATE 1/10/11 APPL		DATE
DIVISION		DIVISION CODE		<p>3M Center St. Paul, MN 55144</p> <p>© 3M COPYRIGHT This document is the copyrighted property of the 3M Company and may not be reproduced without 3M written permission or used for other than 3M authorized purposes.</p>		
DO NOT SCALE DRAWING	SCALE	TOLERANCES EXCEPT AS NOTED				
THIRD ANGLE PROJECTION		INCHES .0 ± * .00 ± * .000 ± * .0000 ± *		TITLE 2P01-0X00-XX ATCA POWER RIGHT ANGLE MALE CONNECTOR		
INTERPRET PER ASME Y14.5 - 1994		MILLIMETERS 0 ± * .0 ± 0.30 .00 ± 0.20 .000 ± 0.10				
MAX SURFACE ROUGHNESS		CAGE NUMBER	SIZE	DRAWING NO.	REV.	
<input type="checkbox"/> ALL SURFACES <input checked="" type="checkbox"/> MARKED ONLY		78-5100-2376-1	C	78-5100-2376-1	A	
ANGLES ± 1°		MODEL	DET. LISTS	<input type="checkbox"/> YES <input type="checkbox"/> NO SHT 1 OF 2		

3M™ POWER RIGHT ANGLE MALE CONNECTOR FOR ATCA APPLICATIONS



RECOMMENDED PC BOARD REQUIREMENTS
(COMPONENT SIDE OF BOARD SHOWN)

DESIGN REFERENCE	NEXT ASSEMBLY	REV	ECO	ISSUE DATE AND DESCRIPTION	DRFT	CHKD
DISTRIBUTION CODES		DRFT	ML	DATE 1/10/11	MFG	DATE
		CHKD	TS	DATE 1/10/11	APPL	DATE
DIVISION	DIVISION CODE	3M 3M Center St. Paul, MN 55144		© 3M COPYRIGHT This document is the copyrighted property of the 3M Company and may not be reproduced without 3M written permission or used for other than 3M authorized purposes.		
DO NOT SCALE DRAWING	SCALE	TOLERANCES EXCEPT AS NOTED		TITLE 2P01-0X00-XX ATCA POWER RIGHT ANGLE MALE CONNECTOR		
THIRD ANGLE PROJECTION	INTERPRET PER ASME Y14.5 - 1994	INCHES .0 ± * .00 ± * .000 ± * .0000 ± *		DRAWING NO. 78-5100-2376-1		
MAX SURFACE ROUGHNESS	ALL SURFACES <input type="checkbox"/> MARKED ONLY	MILLIMETERS 0 ± * .0 ± 0.30 .00 ± 0.20 .000 ± 0.10		CAGE NUMBER	SIZE	REV. A
		ANGLES ± 1'		MODEL	DET. LISTS	<input type="checkbox"/> YES <input type="checkbox"/> NO
				SHT 2 OF 2		