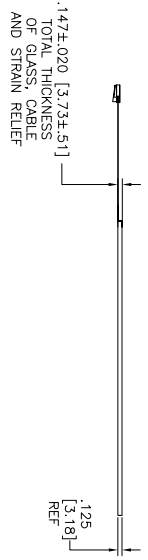
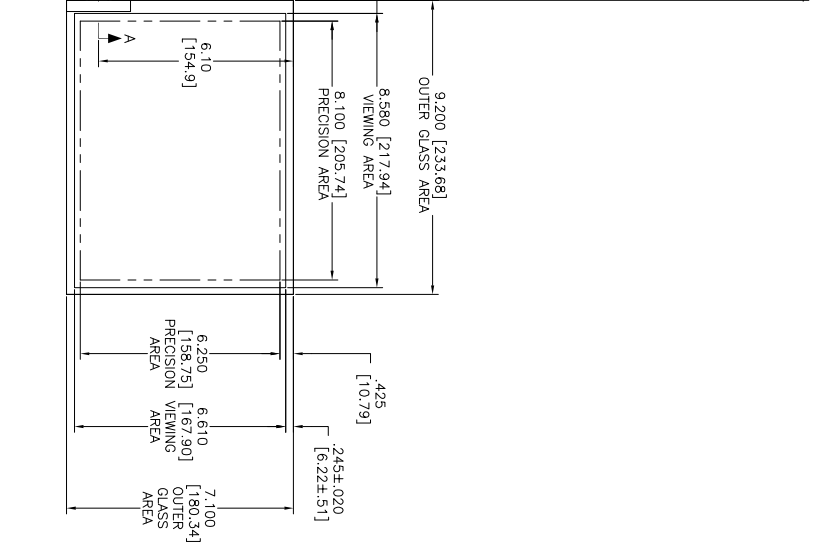
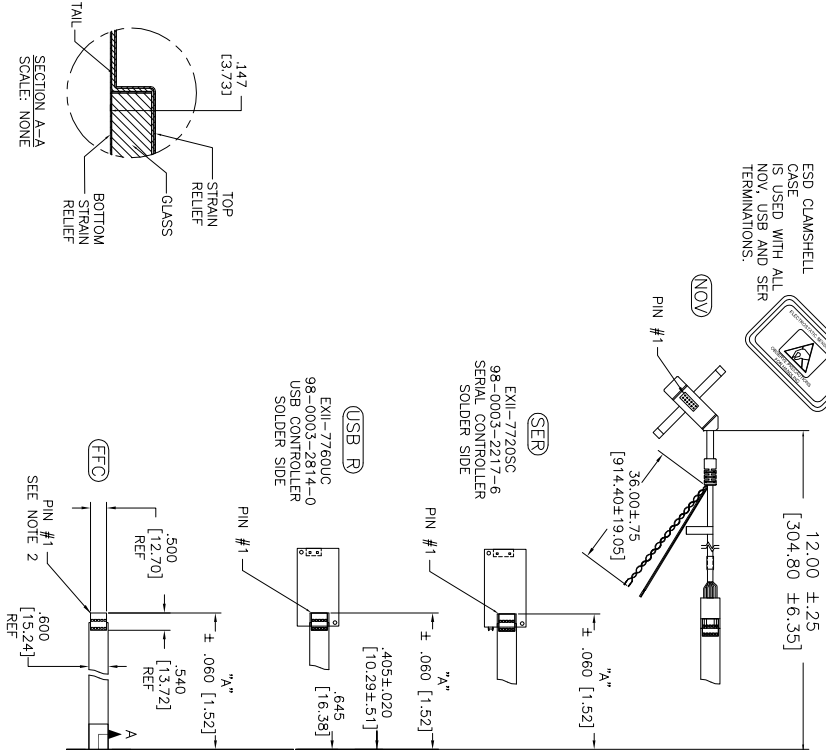
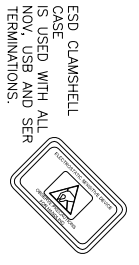


OGA DIAGONAL: 11.62 [295.18]
 VA DIAGONAL: 10.84 [275.46]
 PA DIAGONAL: 10.25 [260.26]



- NOTES:
1. WEIGHT OF GLASS IN GRAMS: 321±10%
 2. NICOMATIC HOUSING P/N: 0L05
 3. NICOMATIC RECEPTACLES (PINS) MATTE TIN PLATED P/N: 14106-12
 4. HOUSING ORIENTED WITH LATCH DOWN

PINOUT	1	LR
	2	LL
	3	SHLD
	4	UL
	5	UR

TOP LEVEL NUMBER	US NUMBER	TYPE	DM "A" (TOTAL GLASS TO CONNECTOR)	A/G FINISH	PROD SPEC
17-8021-203	98-0003-2503-9	FFC	4.27" [108.46]	AG500	23655
17-8021-205	98-0003-2504-7	FFC	8.00" [203.20]	AG500	23655
17-8021-206	98-0003-2505-4	NOV	SEE DWG	AG500	23655
17-8021-221	98-0003-2507-0	SFR	4.27" [108.46]	AG500	23655
17-8021-227	98-0003-2510-4	SFR	8.00" [203.20]	AG500	23655
17-8021-218	98-0003-2916-3	USB R	4.27" [108.46]	AG500	23655
17-8021-226	98-0003-2509-6	USB R	8.00" [203.20]	AG500	23655

UNITS	INCHES [MM]
TOLERANCES UNLESS OTHERWISE SPECIFIED	
X	±.03 [.76]
.XX	±.015 [.38]
.XXX	±.01 [.25]
ANGLES	±.1°
FORM AND FINISH	
DO NOT SCALE DRAWING	
SCALE	1 = 1

© COPYRIGHT 2005 3M TOUCH SYSTEMS
 3M TOUCH SYSTEMS
 USA
 THIS DOCUMENT IS THE UNREGISTERED PROPERTY OF THE COMPANY AND IS TO BE USED WITHOUT ANY WRITTEN PERMISSION OR USED OR REPRODUCED FOR OTHER THAN 3M AUTHORIZED PURPOSES.

REV	DATE	BY	CHK
H	4/13	SB	
G	9/11	SEB	
F	8/11	SB	
REV	DATE	BY	CHK

MARKETING DRAWING
 SCT32NN 10.84"

DO NOT SCALE DRAWING	SCALE	1 = 1
DMW	K. CROWLEY	9/05
SIZE	C	
DOC NO.	28209-MKT	
SHEET	1 OF 1	
REV	H	