

LUCIA-D

~7° diffused spot beam

TECHNICAL SPECIFICATIONS:

Dimensions	89.8 x 89.8 mm
Height	34.7 mm
Fastening	pin, screw
ROHS compliant	yes ⓘ

MATERIAL SPECIFICATIONS:

Component	Type	Material	Colour	Finish
LUCIA-D	Multi-lens	PMMA	clear	

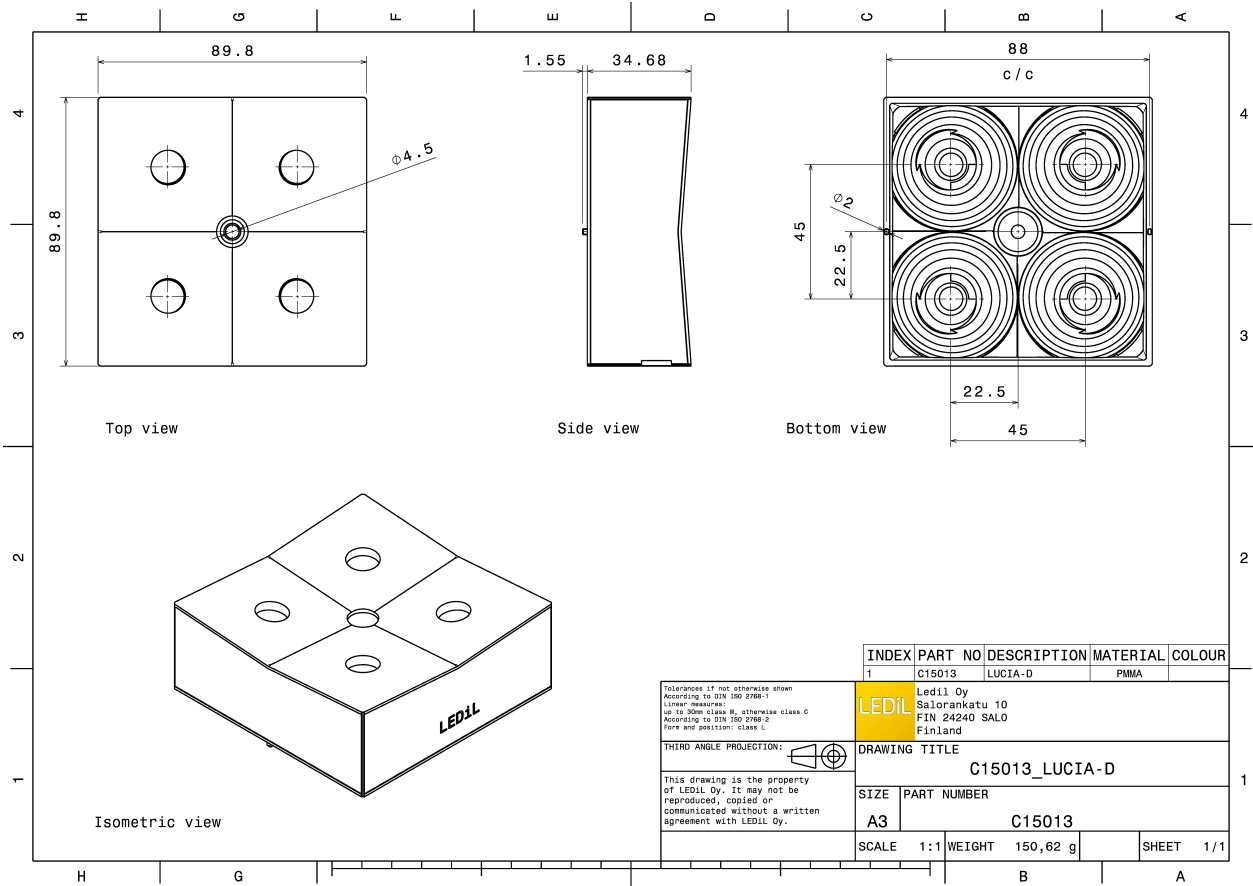
ORDERING INFORMATION:

Component

C15013_LUCIA-D
» Box size: 476 x 273 x 292 mm

Qty in box	MOQ	MPQ	Box weight (kg)
64	16	8	11.0



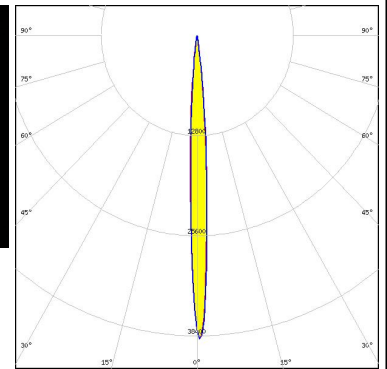


See also our general installation guide: www.ledil.com/installation_guide

PHOTOMETRIC DATA (MEASURED):

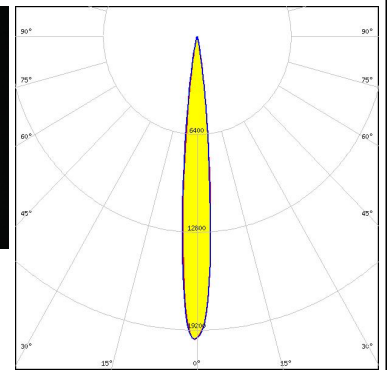
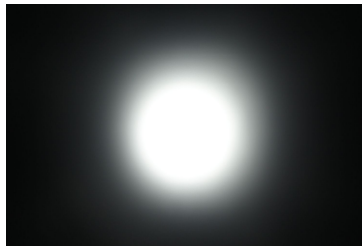
CREE 

LED XP-G2
 FWHM / FWTM 7.0° / 14.0°
 Efficiency 88 %
 Peak intensity 37.5 cd/lm
 LEDs/each optic 1
 Light colour White
 Required components:



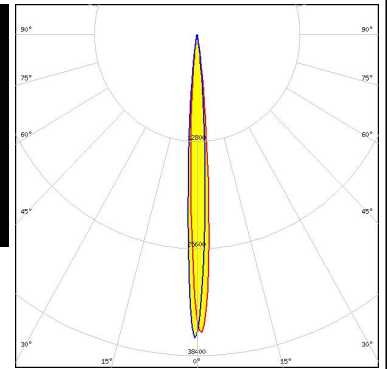
LUMILEDS 

LED LUXEON M/MX
 FWHM / FWTM 11.0° / 20.0°
 Efficiency 94 %
 Peak intensity 19.9 cd/lm
 LEDs/each optic 1
 Light colour White
 Required components:



LUMILEDS 

LED LUXEON Z
 FWHM / FWTM 7.0° / 14.0°
 Efficiency 88 %
 Peak intensity 38.2 cd/lm
 LEDs/each optic 4
 Light colour RGBW
 Required components:



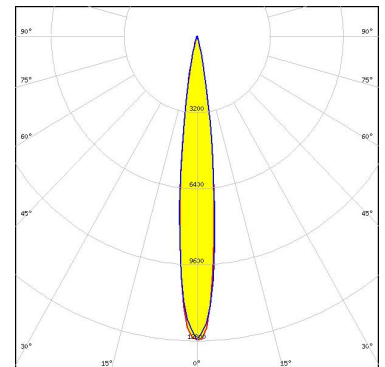
PHOTOMETRIC DATA (SIMULATED):

CREE

LED XHP50
FWHM / FWTM 13.0° / 25.0°
Efficiency 94 %
Peak intensity 14.2 cd/lm
LEDs/each optic 1
Light colour White
Required components:

CREE

LED XHP50.2
FWHM / FWTM 13.0° / 26.0°
Efficiency 94 %
Peak intensity 12.8 cd/lm
LEDs/each optic 1
Light colour White
Required components:



CREE

LED XHP70
FWHM / FWTM 18.0° / 31.0°
Efficiency 91 %
Peak intensity 8.2 cd/lm
LEDs/each optic 1
Light colour White
Required components:

CREE

LED XP-E2
FWHM / FWTM 7.0° / 16.0°
Efficiency 94 %
Peak intensity 41.7 cd/lm
LEDs/each optic 1
Light colour White
Required components:

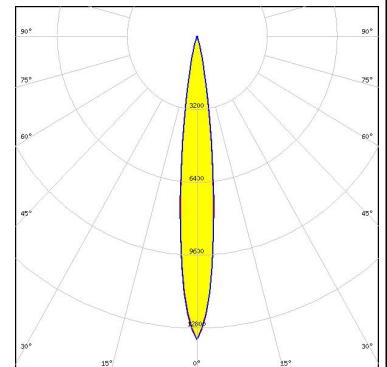
PHOTOMETRIC DATA (SIMULATED):

LUMILEDS

LED LUXEON MZ
 FWHM / FWTM 10.0° / 20.0°
 Efficiency 94 %
 Peak intensity 23.7 cd/lm
 LEDs/each optic 1
 Light colour White
 Required components:

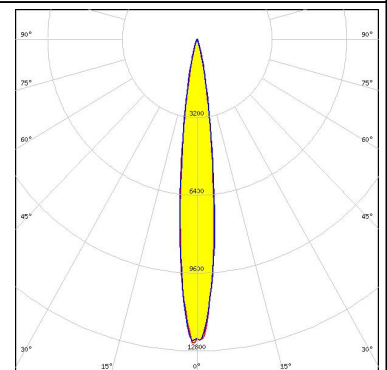
NICHIA

LED NV4x144A
 FWHM / FWTM 13.0° / 26.0°
 Efficiency 94 %
 Peak intensity 13.3 cd/lm
 LEDs/each optic 1
 Light colour White
 Required components:



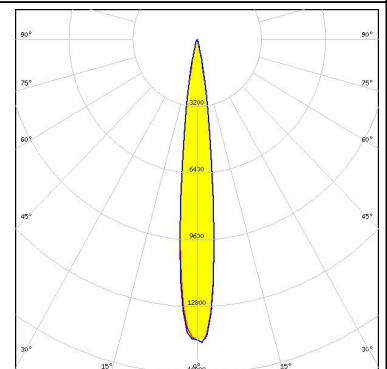
OSRAM Opto Semiconductors

LED Duris S10
 FWHM / FWTM 13.0° / 27.0°
 Efficiency 94 %
 Peak intensity 13 cd/lm
 LEDs/each optic 1
 Light colour White
 Required components:



OSRAM Opto Semiconductors

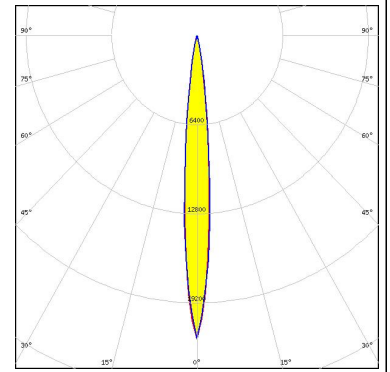
LED OSCONIQ P 7070
 FWHM / FWTM 13.0° / 24.0°
 Efficiency 94 %
 Peak intensity 14.6 cd/lm
 LEDs/each optic 1
 Light colour White
 Required components:



PHOTOMETRIC DATA (SIMULATED):

SAMSUNG

LED	LH351D
FWHM / FWTM	9.8° / 20.0°
Efficiency	94 %
Peak intensity	21.8 cd/lm
LEDs/each optic	1
Light colour	White
Required components:	



GENERAL INFORMATION:

NOTE: The typical beam angle will be changed by different color, chip size and chip position tolerance. The typical total beam angle is the full angle measured where the luminous intensity is half of the peak value.

MATERIALS:

As part of our continuous research and improvement processes, and to ensure the best possible quality and availability of our products, LEDiL reserves the right to change material grades without notice.

PRODUCT DATA USER AGREEMENT AND DISCLAIMER:

The measured data in the provided downloadable LEDiL Product Datasheets and Mechanical 2D-Drawings is rounded and provided as reference for planning. LEDiL Oy's optical specifications have been verified by conducting performance testing of the products in accordance with the company's quality system. The reported data are averaged results of multiple measurements with typical variation. LEDiL Oy reserves the right to without prior notification make changes and improvements to its products.

LEDiL Oy assumes neither warranty, nor guarantee nor any other liability of any kind for the contents and correctness of the provided data. The provided data has been generated with highest diligence but the provided data may in reality not represent the complete possible variation range of all intrinsic parameters. Therefore, in certain cases a deviation from the provided data could occur.

LEDiL Oy reserves the right to undertake technical changes of its products without further notification which could lead to changes in the provided data. LEDiL Oy assumes no liability of any kind for the possible deviation from any provided data or any other damage resulting from the usage of the provided data.

The user agrees to this disclaimer and user agreement with the download or usage of the provided files.

LEDiL Oy

Joensuunkatu 13
FI-24240 SALO
Finland

LEDiL Inc.

228 West Page Street
Suite D
Sycamore IL 60178
USA

Ledil Optics Technology (Shenzhen) Co., Ltd.

405 , Block B
Casic Motor Building
Shenzhen 518057
P.R.CHINA

Local sales and technical support

[www.ledil.com/
where_to_buy](http://www.ledil.com/where_to_buy)

Shipping locations

Salo, Finland
Hong Kong, China

Distribution Partners

[www.ledil.com/
where_to_buy](http://www.ledil.com/where_to_buy)