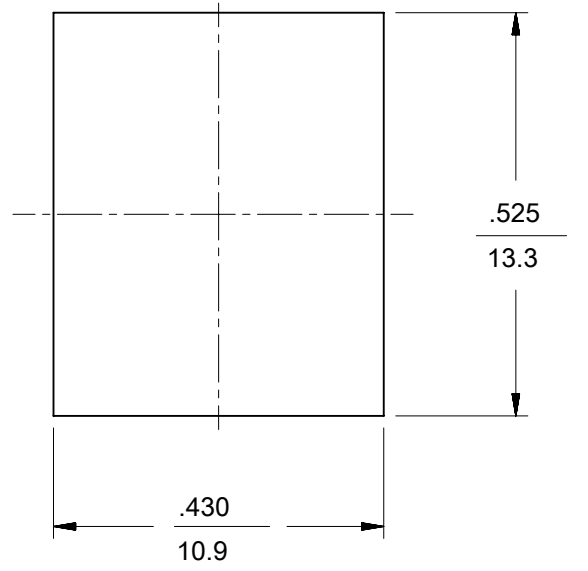
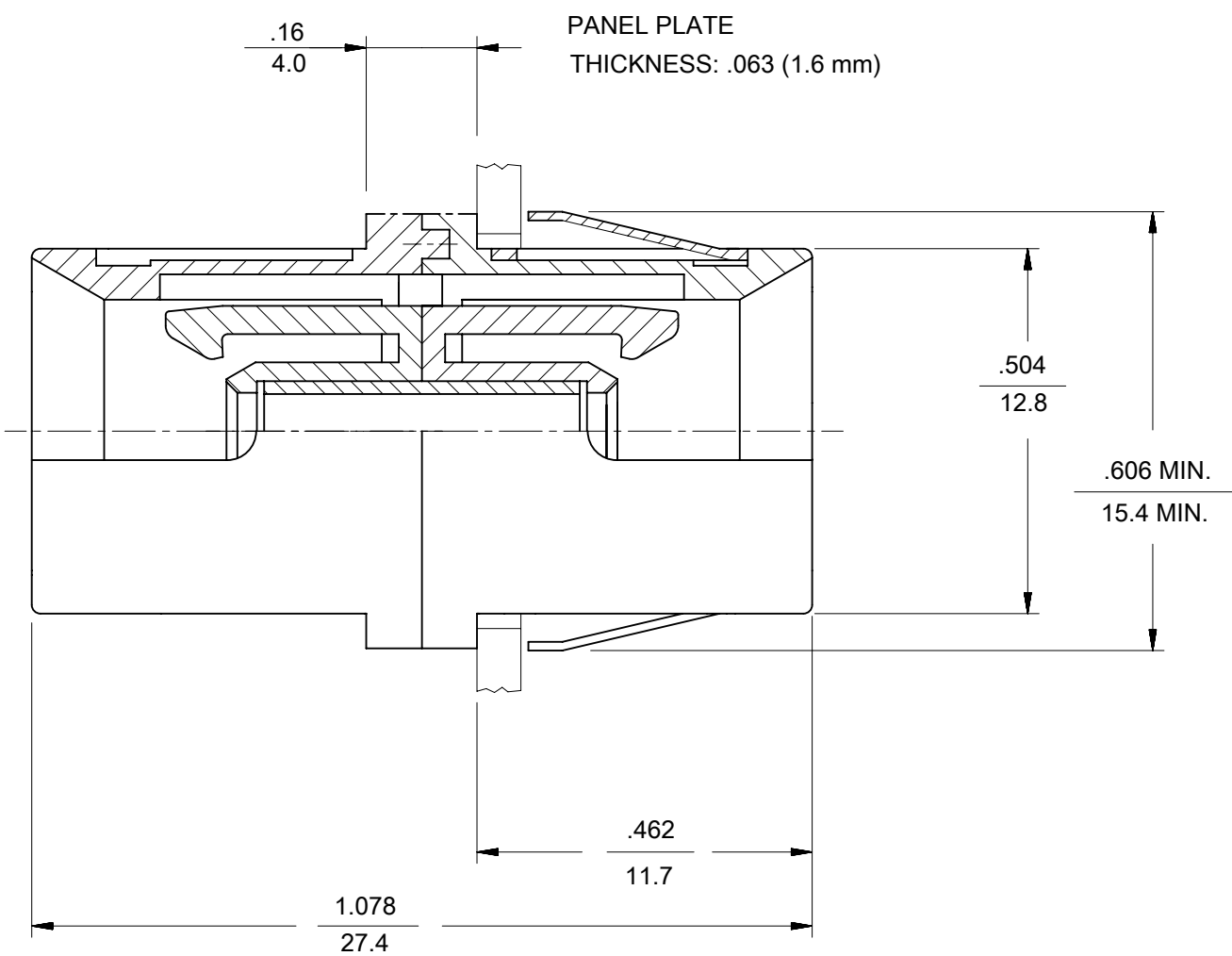
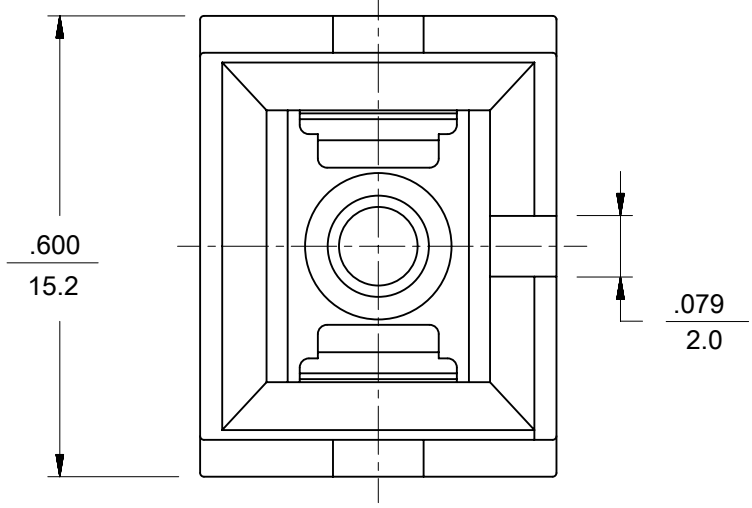
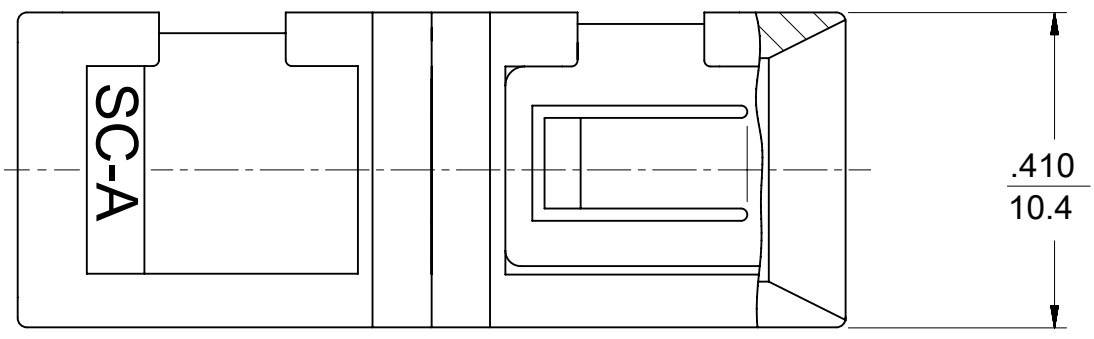


P/N OF ADAPTER	MATERIAL OF SPLIT SLEEVE	COLOR OF ADAPTER SHELL
106171-0100	CERAMIC	BLACK
106170-0120	CERAMIC	GREEN
106171-1120*	CERAMIC	
106170-0130	CERAMIC	RED
106171-0130	CERAMIC	
106170-0150	CERAMIC	BLUE
106170-0153*		
106171-0150	CERAMIC	



- NOTES:
- DUST CAPS ARE NOT SHOWN BUT INCLUDED.
  - P/Ns 106171-1120 AND 106170-0153 ARE BULK PACKED ADAPTER KITS OF 100 PCS.
  - PLASTICS USED IN ADAPTERS ARE UL-94 V-0 RATED.

FUNCTIONAL SYMBOLS										THIS DRAWING CONTAINS INFORMATION THAT IS PROPRIETARY TO MOLEX ELECTRONIC TECHNOLOGIES, LLC AND SHOULD NOT BE USED WITHOUT WRITTEN PERMISSION											
DIMENSION UNITS		SCALE		CURRENT REV DESC:																	
INCH/MM		4:1		EC NO: 691076																	
GENERAL TOLERANCES (UNLESS SPECIFIED)										DRWN: JHUANG18 2021/12/30											
ANGULAR TOL ± 0.5°										CHKD: IGUMIN 2022/01/13											
4 PLACES ±										APPR: IGUMIN 2022/01/13											
DIVISIONAL SYMBOLS										INITIAL REVISION:											
3 PLACES ±										DRWN: PGIBLIN 2005/11/29											
2 PLACES ±										APPR: IGUMIN 2005/11/29											
1 PLACE ±										DOCUMENT NUMBER											
0 PLACES ±										SD-10617X-01X0											
DRAFT WHERE APPLICABLE MUST REMAIN WITHIN DIMENSIONS										THIRD ANGLE PROJECTION		DRAWING		SERIES		MATERIAL NUMBER		CUSTOMER		SHEET NUMBER	
										B-SIZE		106170		SEE TABLE		GENERAL MARKET		1 OF 1			