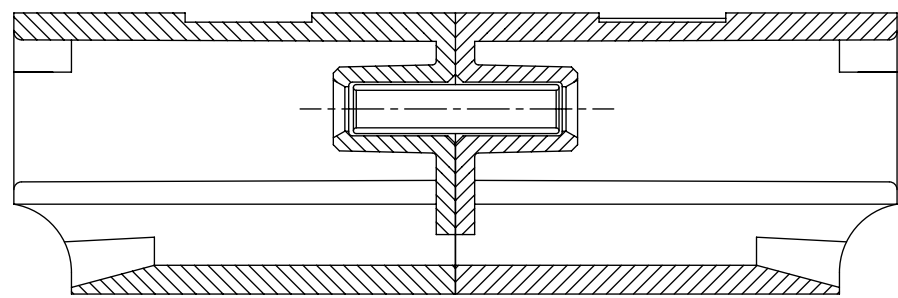
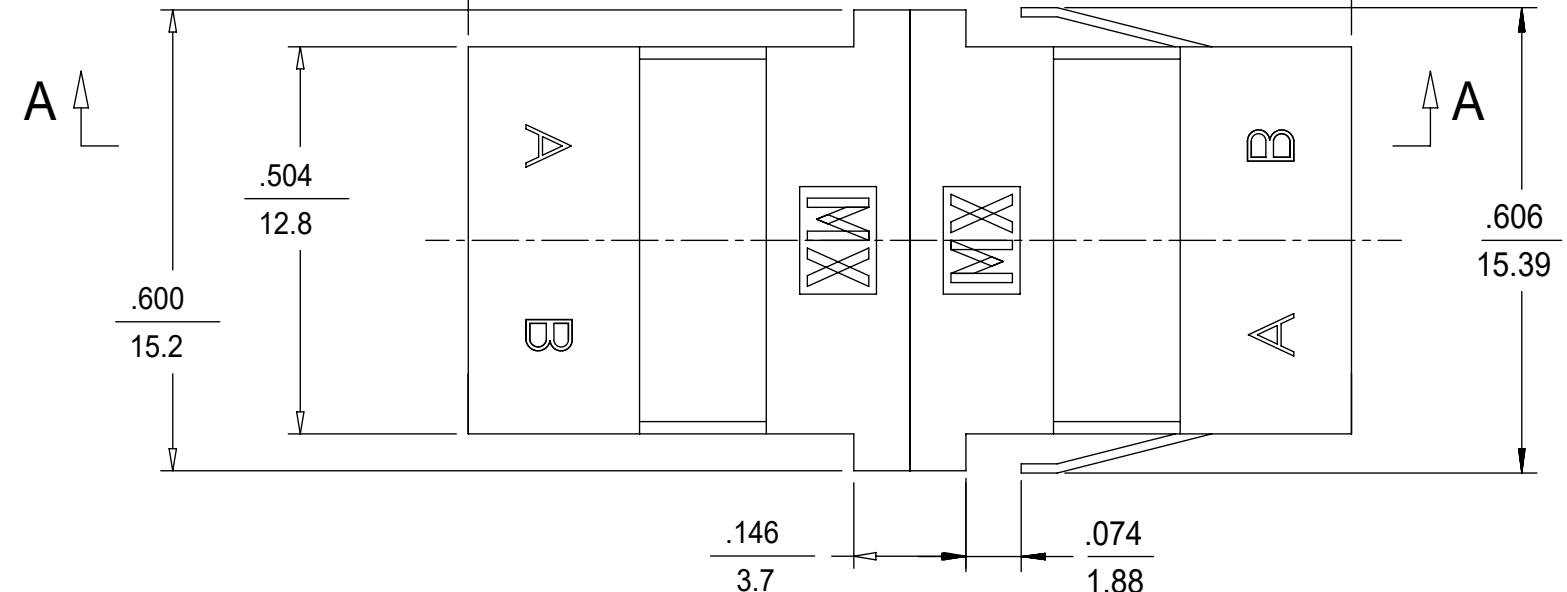
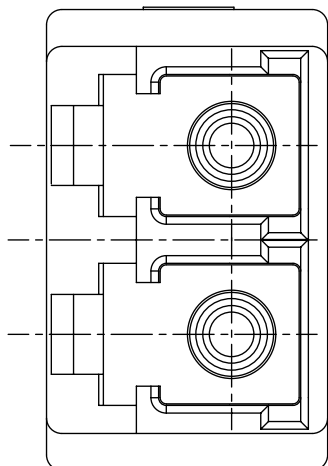
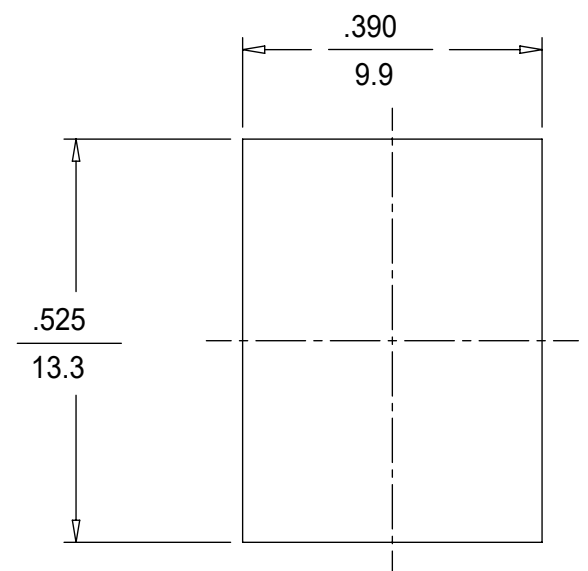


| LC ADAPTER ASSY. P/N | ADAPTER COLOR | SPLIT SLEEVE MATERIAL | DUST CAP COLOR |
|----------------------|---------------|-----------------------|---------------------------|
| 106126-0410 | BEIGE | ZR | WHITE |
| 106126-0510 | BLUE | | |
| 106126-1400 | | | |
| 106126-1415* | | | |
| 106126-1416** | | | |
| 106126-1450 | GREEN | | INDIGO BLUE (ANTI-STATIC) |
| 106126-1460 | BLUE | | |
| 106126-1410 | BLACK | | |
| 106126-1420 | BEIGE | | |
| 106126-1430 | AQUA | | |
| 106126-3410 | BLACK | WHITE | |



SECTION A-A



RECOMMENDED MOUNTING CUTOUT

FOR THICK PANEL .063
1.6

NOTES:

1. ALL DIMENSIONS ARE FOR REFERENCE ONLY.
2. ASSEMBLED DUST CAP NOT SHOWN.
- *3. P/N 106126-1415 IS BULK PACKED IN QUANTITIES OF 100 PCS.
- **4. P/N 106126-1416 IS BULK PACKED AS FOLLOWS: 500 pcs. OF ADAPTERS PER BAG.

| | | | | | | | | | |
|--------------------|---|-------|---|--|--|---------|-----------------|----------|----------|
| FUNCTIONAL SYMBOLS | THIS DRAWING CONTAINS INFORMATION THAT IS PROPRIETARY TO MOLEX ELECTRONIC TECHNOLOGIES, LLC AND SHOULD NOT BE USED WITHOUT WRITTEN PERMISSION | | CURRENT REV DESC: | | molex | | | | |
| | DIMENSION UNITS | SCALE | | | | | | | |
| $\nabla = 0$ | INCH/MM | 1:1 | EC NO: 652962 DRWN: SKRISHNAMU01 2021/05/31 CHK'D: WCHEN 2021/08/24 APPR: WCHEN 2021/08/24 | | LC DUPLEX ADAPTER (SMALL FLANGE/SC FOOT PRINT) | | | | |
| $\nabla = 0$ | GENERAL TOLERANCES (UNLESS SPECIFIED) | | | | | | | | |
| $\nabla = 0$ | ANGULAR TOL $\pm 0.5^\circ$ | | | | PRODUCT CUSTOMER DRAWING | | | | |
| DIVISIONAL SYMBOLS | 4 PLACES | \pm | | | | | | | |
| | 3 PLACES | \pm | INITIAL REVISION: DRWN: PGIBLIN 2005/10/25 APPR: IGUMIN 2005/10/26 | | DOCUMENT NUMBER | | DOC TYPE | DOC PART | REVISION |
| | 2 PLACES | \pm | | | SD-106126-X4X0 | | PSD | 001 | F |
| | 1 PLACE | \pm | | | SERIES | | MATERIAL NUMBER | | CUSTOMER |
| | 0 PLACES | \pm | DRAFT WHERE APPLICABLE MUST REMAIN WITHIN DIMENSIONS | | THIRD ANGLE PROJECTION | DRAWING | SHEET NUMBER | 1 OF 1 | |
| | | | B-SIZE 106126 | | SEE TABLE | | GENERAL MARKET | | |