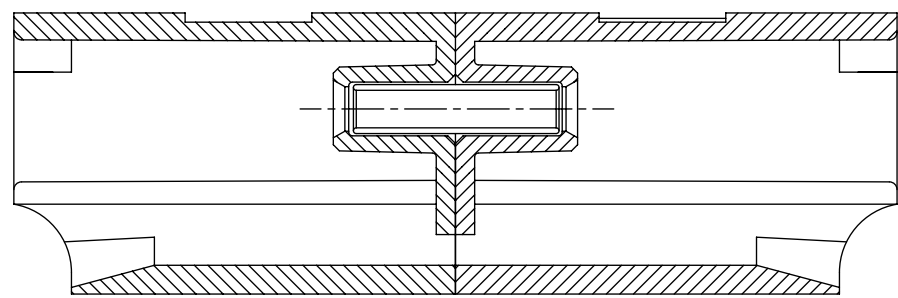
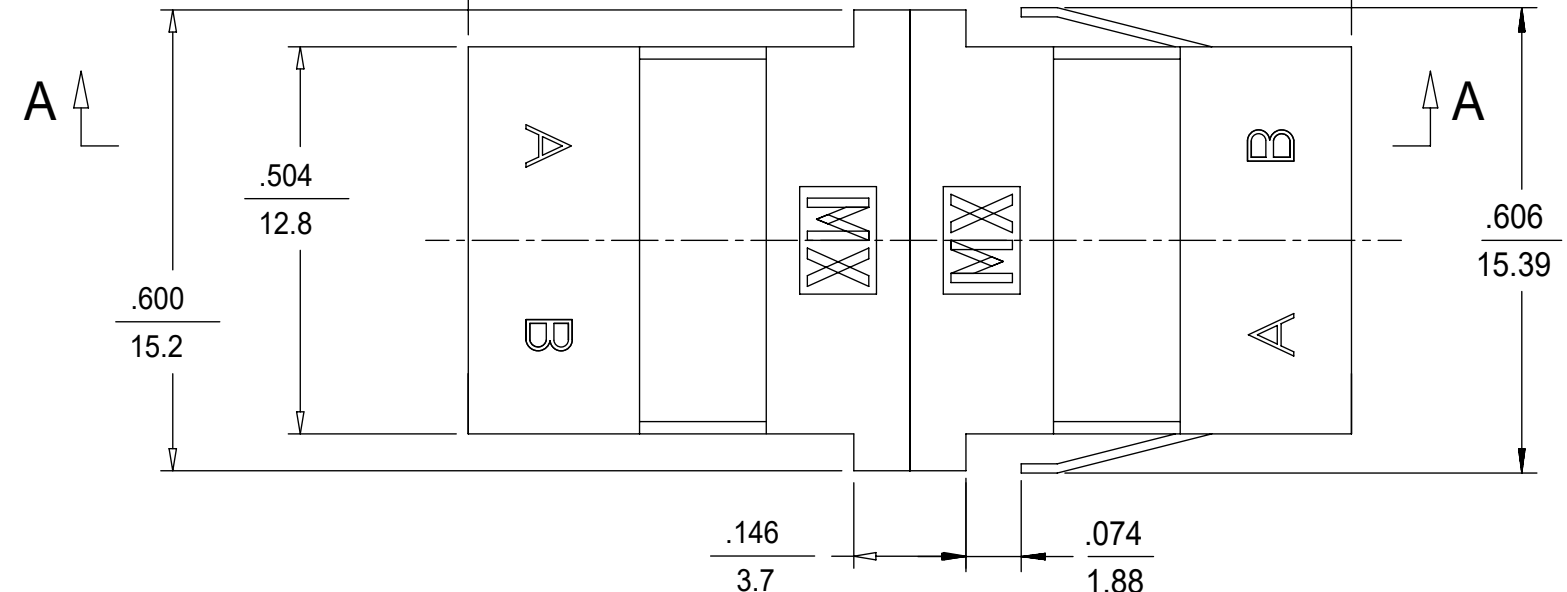
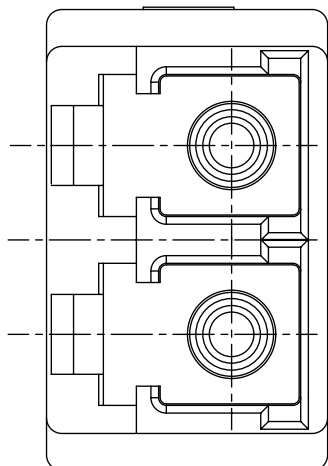
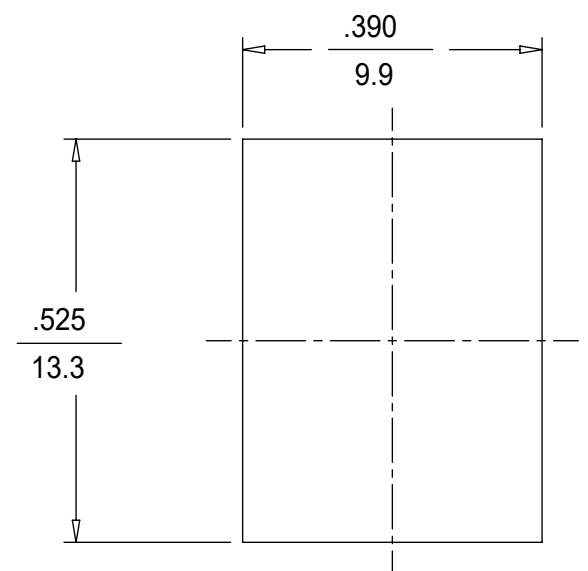


LC ADAPTER ASSY. P/N	ADAPTER COLOR	SPLIT SLEEVE MATERIAL	DUST CAP COLOR
106126-0410	BEIGE	ZR	WHITE
106126-0510	BLUE		
106126-1400			
106126-1415*			
106126-1416**			
106126-1450	GREEN		INDIGO BLUE (ANTI-STATIC)
106126-1460	BLUE		
106126-1410	BLACK		
106126-1420	BEIGE		
106126-1430	AQUA		
106126-3410	BLACK	WHITE	



SECTION A-A



RECOMMENDED MOUNTING CUTOUT

FOR THICK PANEL  $\frac{.063}{1.6}$

NOTES:

1. ALL DIMENSIONS ARE FOR REFERENCE ONLY.
2. ASSEMBLED DUST CAP NOT SHOWN.
- \*3. P/N 106126-1415 IS BULK PACKED IN QUANTITIES OF 100 PCS.
- \*\*4. P/N 106126-1416 IS BULK PACKED AS FOLLOWS: 500 pcs. OF ADAPTERS PER BAG.

FUNCTIONAL SYMBOLS	THIS DRAWING CONTAINS INFORMATION THAT IS PROPRIETARY TO MOLEX ELECTRONIC TECHNOLOGIES, LLC AND SHOULD NOT BE USED WITHOUT WRITTEN PERMISSION		CURRENT REV DESC:		<b>molex</b>				
	DIMENSION UNITS	SCALE							
$\nabla = 0$	INCH/MM	1:1	EC NO: 652962 DRWN: SKRISHNAMU01 2021/05/31 CHK'D: WCHEN 2021/08/24 APPR: WCHEN 2021/08/24		LC DUPLEX ADAPTER (SMALL FLANGE/SC FOOT PRINT)				
$\nabla = 0$	GENERAL TOLERANCES (UNLESS SPECIFIED)								
$\nabla = 0$	ANGULAR TOL $\pm 0.5^\circ$				PRODUCT CUSTOMER DRAWING				
DIVISIONAL SYMBOLS	4 PLACES	$\pm$							
	3 PLACES	$\pm$	INITIAL REVISION: DRWN: PGIBLIN 2005/10/25 APPR: IGUMIN 2005/10/26		DOCUMENT NUMBER		DOC TYPE	DOC PART	REVISION
	2 PLACES	$\pm$			SD-106126-X4X0		PSD	001	F
	1 PLACE	$\pm$			SERIES		MATERIAL NUMBER		CUSTOMER
	0 PLACES	$\pm$	DRAFT WHERE APPLICABLE MUST REMAIN WITHIN DIMENSIONS		THIRD ANGLE PROJECTION	DRAWING	SHEET NUMBER	1 OF 1	
			B-SIZE		106126	SEE TABLE	GENERAL MARKET		