



*Quality Products. Service Excellence.*

## Economy Fixed Depth Wall Rack *RB-WR Series*

Rugged 70 lbs (32 kg) Weight Capacity

### Features

- Available in 1U, 2U and 4U mounting heights.
- Hinged for easy rear access to devices.
- Rear cutout for cable entry through the wall.
- Fixed-depth of 6"



### Specifications

- Constructed in 16-gauge steel.
- Round hole 19" mounting rails are constructed in 16-gauge steel.
  - Includes ten **CLPKIT10-32-10** black rack screws with washers and clip nuts.
- Load rated up to 70 lbs (32 kg).
- Finished in RAL9005 black powder paint.
- TAA compliant for GSA Schedule purchases.
- RoHS Compliant.
- Manufactured in North America within an ISO 9001:2015 certified facility.

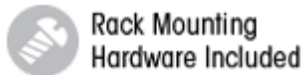


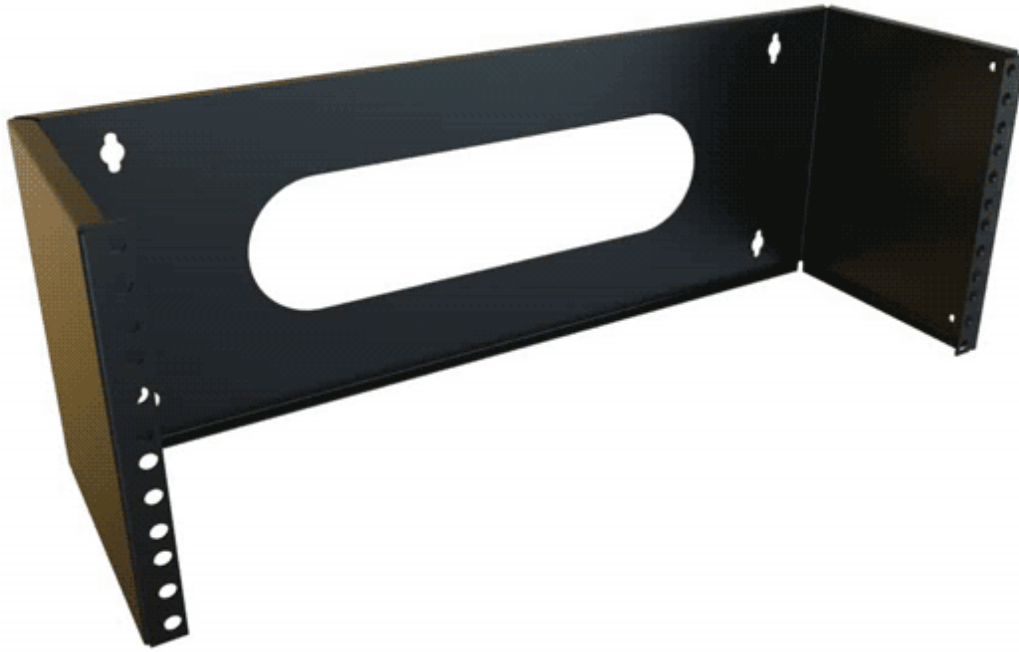
**RACK BASICS®**

Part of the Rack Basics® line of economy rack solutions

### Accessories

- Cable Managers
- PDUs and Outlet Strips
- 10-32 Mounting Screw and Clip Nut Combo-Pack





Part No.	Overall Dimensions			Rack Units	Mounting Dimensions		
	Height	Width	Depth		Height	Width	Depth
RB-WR1	1.88	19.36	6.00	1U	1.75	19.00	5.75
RB-WR2	3.62	19.36	6.00	2U	3.50	19.00	5.75
RB-WR4	7.12	19.36	6.00	4U	7.00	19.00	5.75

*Data subject to change without notice*

© 2022. Hammond Manufacturing Ltd. All rights reserved.