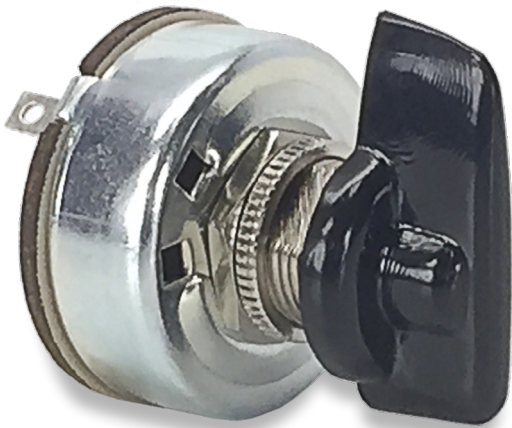
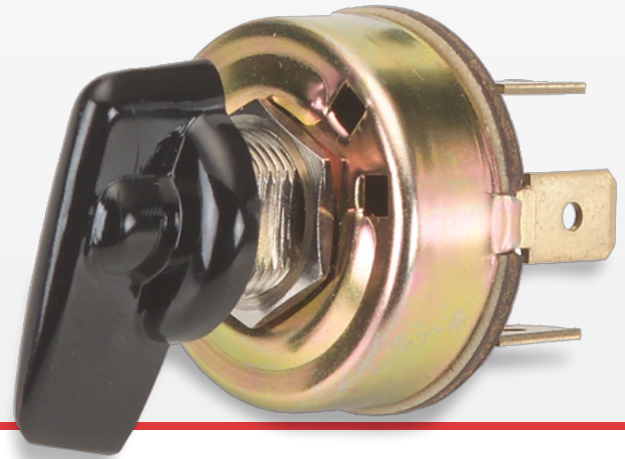


700/800-Series

Rotary Switches

[PRODUCT WEBPAGE](#)

request sample, configure part



The 700 and 800-Series are single pole multi-position, general purpose rotary switches. These switches feature a nylon actuator in a metal clad construction along with a self-cleaning silver plated contact design. The 700 and 800-Series are typically used in applications requiring multi-position speed controls, such as electric fans.

1	1-6	125, 250	125
Pole	Amps	VAC	VDC

Typical Applications

- Small Appliances
- Industrial Control
- Marine

Tech Specs

Dielectric Strength

UL/CSA: 1000V (minimum)

Insulation Resistance

100 Megohms (minimum)

Base Material

Steel/Zinc Plate

Actuator Material

Brass/Nickel Plate

Ordering Scheme

Sample Part Number **700-1A BL**

Selection 1 2

1. SERIES / POLES / CIRCUITRY / RATING / TERMINATION ¹

2A 250VAC; 4A 125VAC; 1A 125V

Solder Lugs	250 Tabs	Positions:	1	2	3	4
-	700-A	OFF	ON	ON	ON	ON
700-1	700-1A	OFF	ON	-	-	-
700-2	700-2A	OFF	ON	ON	ON	ON (repeating for 8 positions)
700-3	700-3A	OFF	ON	ON	OFF	-
700-4	700-4A	OFF	ON	ON	ON	-
700-5	700-5A	OFF	ON	OFF	-	-
700-6	700-6A	-	ON	OFF	ON	-
700-7	700-7A	-	ON	ON	-	-
700-8	700-8A	-	ON	ON	ON	ON
700-9	700-9A	OFF	ON	OFF	ON	ON

3A 250VAC; 6A 125VAC

Switch Positions	OFF Position
800-2 2 positions	800-A 1st position
800-3 3 positions	800-A2 2nd position
800-4 4 positions	800-A3 3rd position
800-5 5 positions	800-A4 4th position
800-6 6 positions	800-A5 5th position
800-7 7 positions	800-A6 6th position
800-8 8 positions	800-A7 7th position
	800-A8 8th position

2. ACTUATOR COLOR

BL Black

Notes:

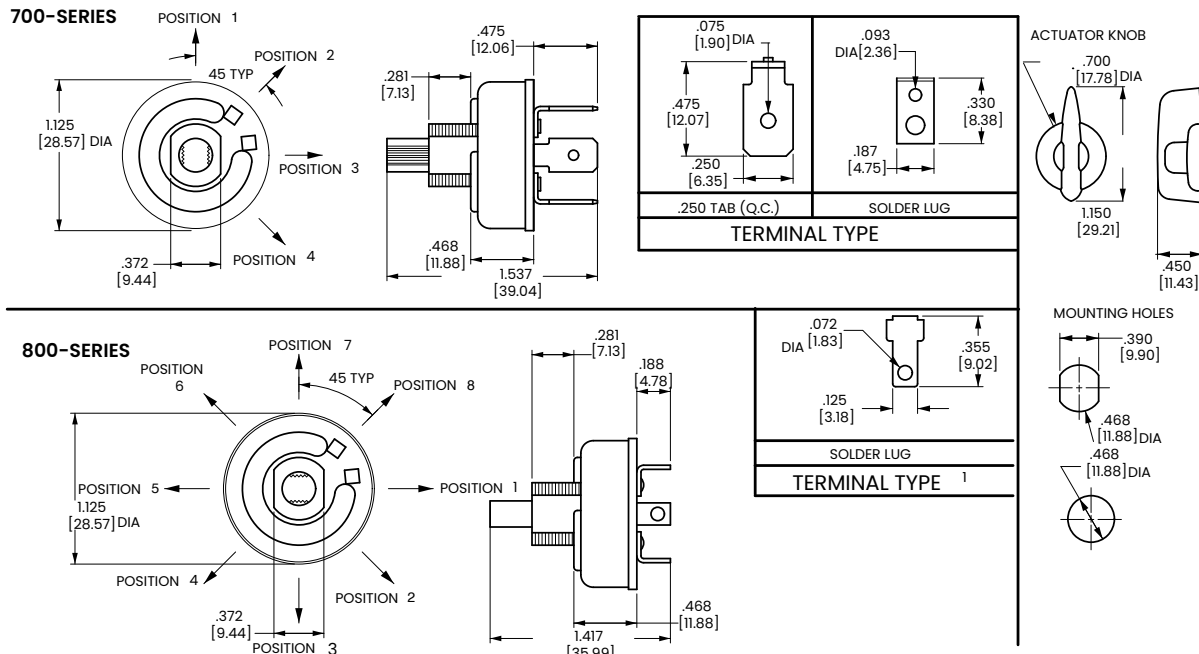
- ¹ 700-2 and 700-2A feature 8 detent positions.
800-Series terminal is a combination solder lug and quick connect.

[Configure Complete Part Number >](#)

[Browse Standard Parts >](#)

Dimensional Specs

inches [millimeters]



Notes:

1. Terminal is combination solder lug and quick connect.

Authorized Sales Representatives and Distributors

Click on a region of the map below to find your local representatives and distributors or visit www.carlingtech.com/findarep.



About Carling

Founded in 1920, Carling Technologies is a leading manufacturer of electrical and electronic switches and assemblies, circuit breakers, electronic controls, power distribution units, and multiplexed power distribution systems. With six ISO9001 and IATF16949 registered manufacturing facilities and technical sales offices worldwide, Carling Technologies Sales, Service and Engineering teams do much more than manufacture electrical components, they engineer powerful solutions! To learn more about Carling please visit www.carlingtech.com/company-profile.

To view all of Carling's environmental, quality, health & safety certifications please visit www.carlingtech.com/environmental-certifications.

© Carling Technologies, Inc.

3. Carling is a registered trademark of Carling Technologies, Inc. in the U.S. and other countries.