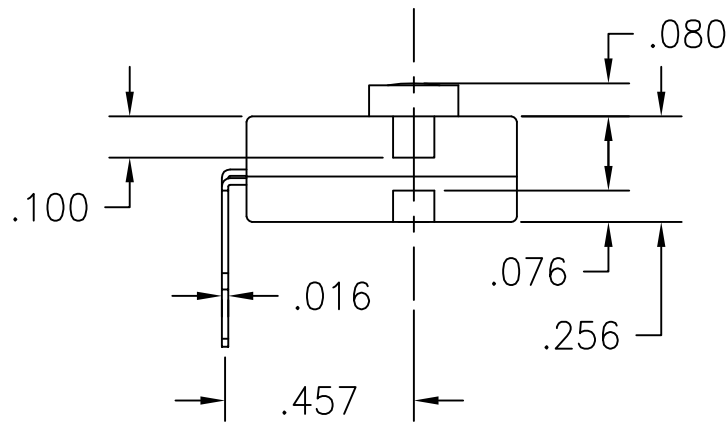
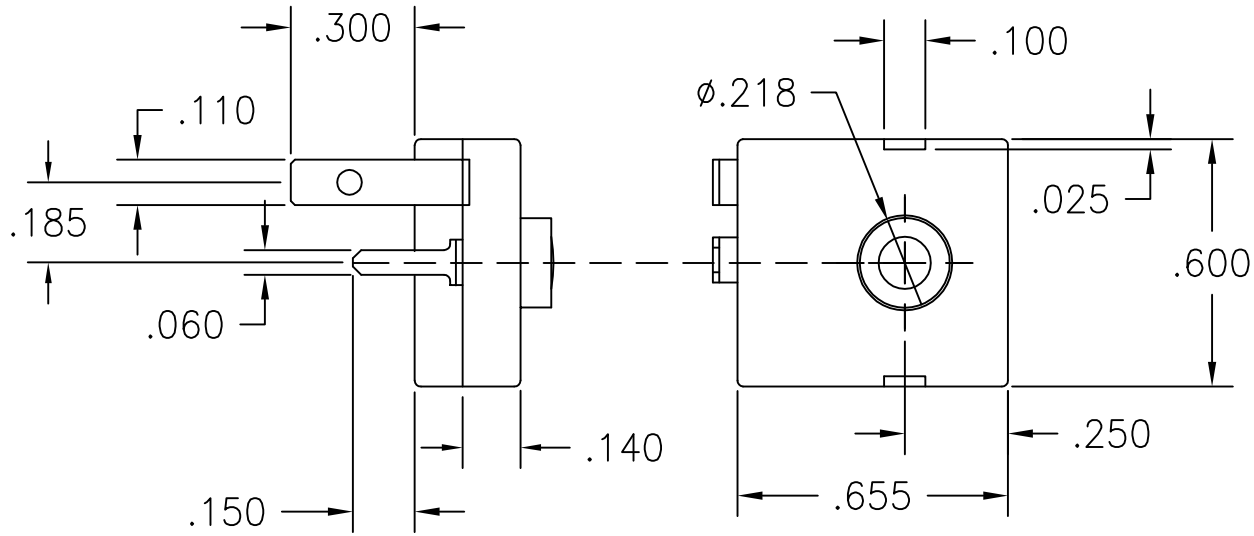

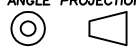


LTR	EN	DESCRIPTION	APPR	BY	DATE
A	-	INITIAL RELEASE	MT	NH	2-10-12



JUDCO INVENTORY NO. 40-4911-00
 SWITCH TYPE: PUSH ON, PUSH-OFF
 J-987-1P

CUSTOMER:
 CUSTOMER PN:
 APPROVED BY: _____
 DATE: _____

DIMENSIONS IN INCHES DIMENSIONS ARE REFERENCE		 HARBOR CITY CALIFORNIA
DRAWN: NH	2-10-12	
APPR: KJ	2-10-12	TITLE OUTLINE
ENG'G: IS	2-10-12	J-987-1 FLAT PACK
3RD ANGLE PROJECTION 		DWG. NO. 1415-1636
		SHEET 1 OF 1

This document embodies a product, component, and/or design proprietary to JUDCO MANUFACTURING INC., and which is protected either as a trade secret, by U.S. Patent, or by copyright. It may not be used in any way without written express consent of JUDCO MANUFACTURING INC.