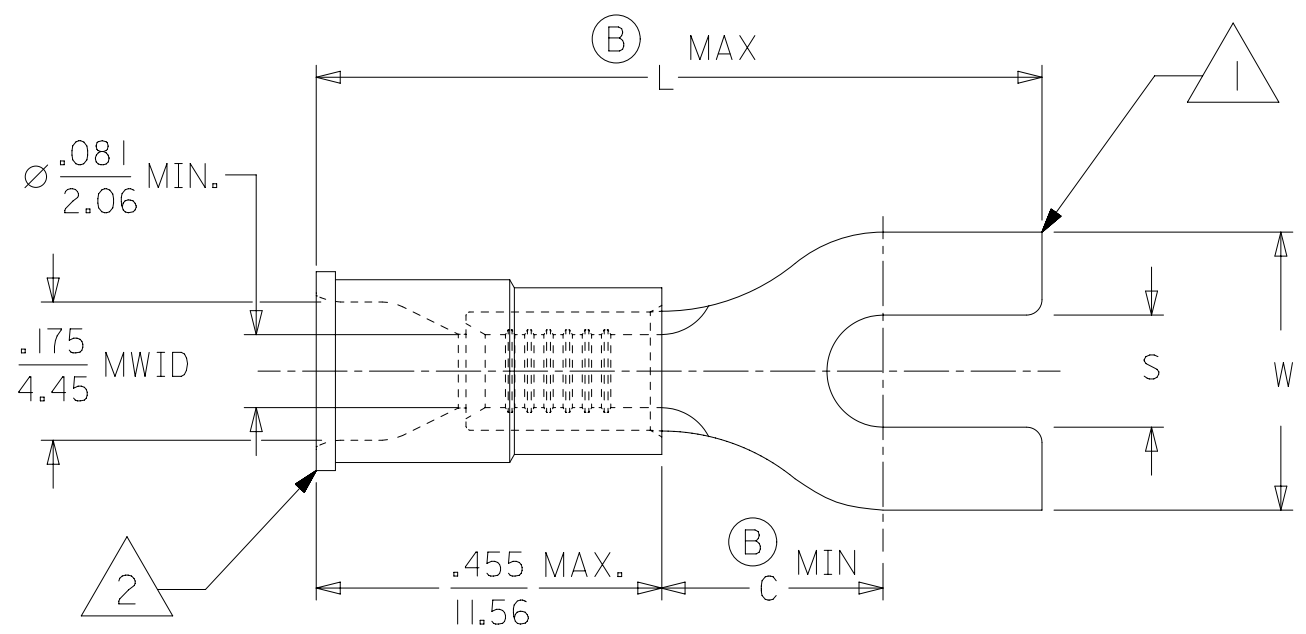
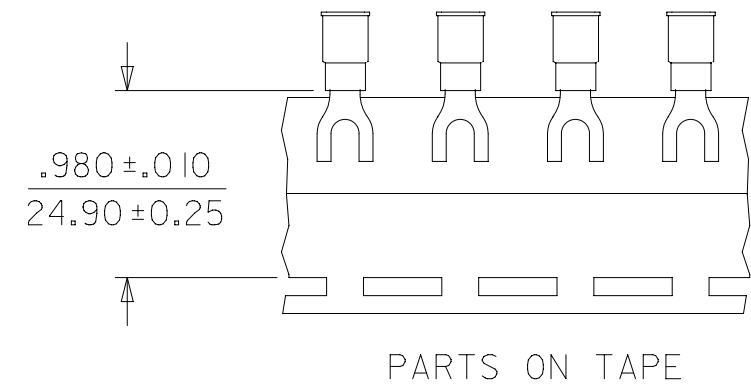


	10	9	8	7	6	5	4	3	2	1	
F	MATERIAL NUMBER	ENGINEERING NUMBER	STUD SIZE	"S" ±.005/(0.13)	"W" ±.010/(0.25)	"C" MIN (B)	"L" MAX (B)	PACKAGING			
	191420020	B-207-06X	6	.146/(3.71)	.245/(6.22)	.209/(5.31)	.834/(21.18)	LOOSE PIECE			
	191420024	B-224-06X	6	.146/(3.71)	.295/(7.49)	.211/(5.36)	.831/(21.11)				
	191420027	B-224-08X	8	.173/(4.39)	.295/(7.49)	.211/(5.36)	.831/(21.11)				
	191420029	B-227-06X	6	.146/(3.71)	.362/(9.19)	.269/(6.83)	.966/(24.54)				
	191420030	B-227-08X	8	.173/(4.39)	.388/(9.85)	.269/(6.83)	.966/(24.54)				
	191420032	B-227-10X	10	.198/(5.03)	.388/(9.85)	.269/(6.83)	.966/(24.54)				
E	191420069	B-207-04XT	4	.119/(3.02)	.245/(6.22)	.209/(5.31)	.834/(21.18)	TAPE MOUNTED			
	191420021	B-207-06XT	6	.146/(3.71)	.245/(6.22)	.209/(5.31)	.834/(21.18)				
	191420071	B-224-04XT	4	.119/(3.02)	.295/(7.49)	.211/(5.36)	.831/(21.11)				
	191420025	B-224-06XT	6	.146/(3.71)	.295/(7.49)	.211/(5.36)	.831/(21.11)				
	191420031	B-227-08XT	8	.173/(4.39)	.388/(9.85)	.269/(6.83)	.966/(24.54)				
	191420033	B-227-10XT	10	.198/(5.03)	.388/(9.85)	.269/(6.83)	.966/(24.54)				



SALES DRAWING

- NOTES:
1. MATERIAL: COPPER .031/(.79) THICK.
  2. PLATING: ELECTRO-TIN.
  3. INSULATION: MOLDED PVC (BLUE)
  4. MWID=MAXIMUM WIRE INSULATION DIAMETER.

THIS DRAWING CONTAINS INFORMATION THAT IS PROPRIETARY TO MOLEX ELECTRONIC TECHNOLOGIES, LLC AND SHOULD NOT BE USED WITHOUT WRITTEN PERMISSION											
DIMENSION UNITS INCH/MM		SCALE 4:1		CURRENT REV DESC: OBSOLETE PART NUMBERS AS PER PCN#508521						<b>molex</b>	
GENERAL TOLERANCES (UNLESS SPECIFIED)				EC NO: 667388		2021/04/15		SPACE TONGUE TERMINAL INSULKRIMP 200 SERIES			
		MM	INCH	DRWN: SKANDB		2021/07/05				PRODUCT CUSTOMER DRAWING	
4 PLACES ±		±	±	CHK'D: GGA		2021/07/05		DOCUMENT NUMBER <b>SD-19142-001</b>			
3 PLACES ±		±	±	APPR: GGA		2021/07/05				DOC TYPE PSD	
2 PLACES ±		±	±	INITIAL REVISION:		1999/11/12		DOC PART 001			
1 PLACE ±		±	±	DRWN: HEB		1999/11/12				REVISION C	
0 PLACES ±		±	±	APPR: RWD		1999/11/12		MATERIAL NUMBER SEE TABLE			
ANGULAR TOL ± °		±	°	THIRD ANGLE PROJECTION		DRAWING B-SIZE				CUSTOMER GENERAL MARKET	
DRAFT WHERE APPLICABLE MUST REMAIN WITHIN DIMENSIONS				SERIES 19142		SHEET NUMBER 1 OF 1					