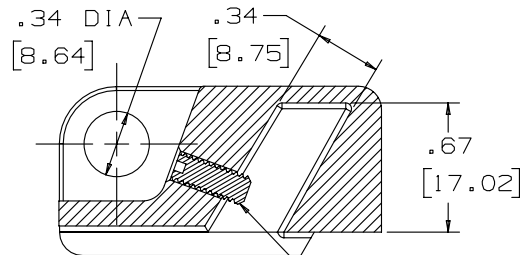
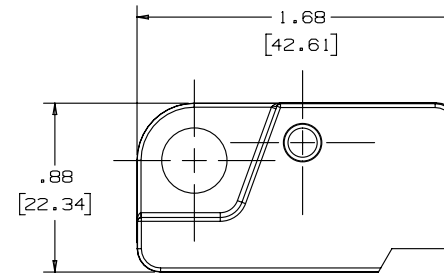
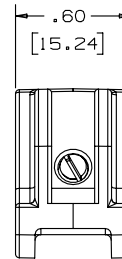
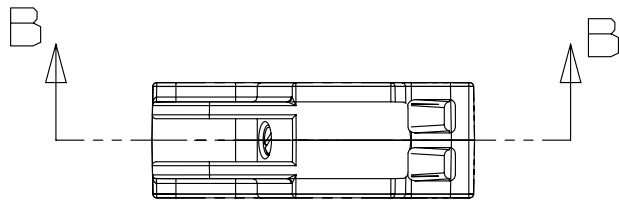


2

1

THIS COPY IS PROVIDED ON A RESTRICTED BASIS AND IS NOT TO BE USED IN ANY WAY DETRIMENTAL TO THE INTERESTS OF PANDUIT CORP.



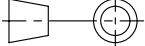
SECTION B-B

10-32 X 1/2" LONG STAINLESS STEEL
SLOTTED CUP POINT SET SCREW.

NOTES:

1. COLOR - RED
2. PACKAGING - 1 EACH. WITH INSTRUCTIONS
ON BACK SIDE OF PACKAGING.
3. DIMENSION IN BRACKETS ARE METRIC.

3

							TITLE PSL-WS WALL SWITCH LOCKOUT CUSTOMER DRAWING					
							ITEM REVISION NAME I00276AJ/04			<div>PANDUIT</div>		
							DATASET FILE NAME I00276AJ_C10084_PSL-WS/04D					
3	1/5/15	RVU	MJPF	MSAD	REMOVED PN: PSL-WSG FROM TITILE.	GAECN02496	UNLESS OTHERWISE SPECIFIED, DIMENSIONAL TOLERANCES ARE: IN (mm) .x ± .1 [2.54] .xxx ± .03 [.762] .xx ± .05 [1.27] ANGLES ± 5 ° <div></div> THIRD ANGLE PROJECTION			MATERIAL: RED NYLON		
2	6/16/14	RVU	MJPF	MSAD	REVISED NOTE 2. ADD TOLEREANCES.	GAECN02078						
1	10/5/06	RVU			MISC. REVISION.	4712				DRAWING NUMBER: C10084		
R	10/8/03	RVU			DRAWING RELEASE	2965						
REV	DATE	BY	CHK	APR	DESCRIPTION	ECN	DRAWN BY RVU	DATE 10/8/03	CHK MSAD	SCALE FULL	SHT 1 OF 1	SIZE A

2

1